

Article

Combination of Primary Measures on Flue Gas Emissions in Grate-Firing Biofuel Boiler

Adolfas Jančauskas * and Kęstutis Buinevičius

Department of Energy, Faculty of Mechanical Engineering and Design, Kaunas University of Technology, 51424 Kaunas, Lithuania; kestutis.buinevicius@ktu.lt

* Correspondence: adolfas.jancauskas@ktu.lt

Abstract: Increasingly stringent limits for NO_x and SO₂ emission are forcing the investigation of new reduction methods. This study was conducted to determine the combination of primary measures, i.e., flue gas recirculation (FGR) and excess air effects on sulfur, nitrogen and hydrocarbon emissions, in boiler flue gas. Experimental research was performed using an experimental, small-scale (20 kW) model of an industrial biofuel boiler. During combustion of sunflower seed hulls at different FGR ratios and incomplete combustion regimes, the composition of flue gas (NO, NO₂, N₂O, HCN, NH₃, SO₂, SO₃, H₂S, CO, and C_xH_y) was compared, allowing an explanation of the determinants of emission concentration changes to be provided. Increasing the flue gas recirculation ratio in the primary air had a positive effect on reducing NO_x and CO with certain organic compounds. However, an opposite effect on SO₂ was observed. NO_x and SO₂ concentrations were found to be approximately 500 mg/m³ and 150 mg/m³ under a regular combustion regime. When the FGR ratio of 50% NO_x concentration decreased by 110 mg/m³, the SO₂ concentration increased by 60 mg/m³. The incomplete combustion regime reduced NO_x concentration by 70 mg/m³, whereas SO₂ concentration increased by 100 mg/m³. The influence of primary measures presented an unclear relationship to hydrocarbon emissions, with concentrations not exceeding 18 mg/m³.

Keywords: biofuel; biomass; emissions; recirculation; NO_x; SO₂; CO



Citation: Jančauskas, A.; Buinevičius, K. Combination of Primary Measures on Flue Gas Emissions in Grate-Firing Biofuel Boiler. *Energies* **2021**, *14*, 793. <https://doi.org/10.3390/en14040793>

Academic Editor: Byong-Hun Jeon
Received: 18 December 2020
Accepted: 28 January 2021
Published: 3 February 2021

Publisher's Note: MDPI stays neutral with regard to jurisdictional claims in published maps and institutional affiliations.



Copyright: © 2021 by the authors. Licensee MDPI, Basel, Switzerland. This article is an open access article distributed under the terms and conditions of the Creative Commons Attribution (CC BY) license (<https://creativecommons.org/licenses/by/4.0/>).

1. Introduction

The widespread use of wood for energy production in Europe over the last decade showed that a large proportion of fossil fuels can be replaced with renewable resources. In many EU countries, wood is an important source of energy. In Finland, the Baltic states and Poland, more than three quarters of renewable energy is obtained by burning shredded wood chips [1]. Wood chips are produced from low-value stems, bark, and branches with traces of leaves and needles. The use of this biomass for energy production is the best solution if this waste is not suitable for the production of any other product.

Energy production from biomass is economically feasible when the biomass source is nearby. The energy density of biomass being several times lower compared to oil increases logistics costs. For countries with low forest cover areas, it may be too expensive to transport wood biomass from remote sources. Due to this, local biomass sources should be considered. Agricultural waste (agricultural byproducts) is playing an increasing role in this regard, with this waste amounting to 22 Mtoe and using approximately half the wood biomass potential [2]. Agricultural waste is generated by processing agricultural products as waste from the food industry, e.g., waste from cleaning and processing of cereals, oat husks, sunflower hulls, grain screenings, straw, etc. The use of this waste for energy production could reduce fossil fuel consumption. In addition, it could represent a forest protection solution, especially when high-quality stems are needed for wood pellet production.

Energy production from biofuels containing higher quantities of nitrogen and sulfur, e.g., agricultural waste, could be complicated, since it potentially generates higher NO_x

and SO₂ emissions [3]. NO_x and SO₂ emissions are harmful emissions for flora and fauna and are the major cause of acid rain, creating a harmful environment for human health [4]. Directives (EU) 2010/75 and 2015/2193 of the European Parliament and the Council for new medium combustion plants for biofuel boilers pollutant concentration presented significantly stringent demands for NO_x and SO₂ atmospheric pollutant concentration control. The limit for NO_x was reduced to 300 mg/m³, whereas SO₂ was reduced to 200 mg/m³ for biomass fuel. In certain countries, these restrictions are even greater. Agricultural waste typically contains more problematic elements, like sodium, potassium, chlorine, sulfur, phosphorus, and silicon, compared with wood. These elements form types of ash with low melting points. During combustion, these elements result in ash slagging on the grate [5] and form deposits that reduce boiler efficiency or even clog heat exchangers [6], which can cause unplanned boiler shutdowns.

NO_x and SO₂ emission reductions for biofuel boilers traditionally use various desulfurization and denitrification technologies. The most common NO_x reduction measures for biofuel boilers are primary and secondary (post combustion) methods. However, primary methods usually have limited effectiveness, whereas secondary methods, i.e., selective noncatalytic reduction (SNCR) and selective catalytic reduction (SCR) technologies, have high effectiveness [7] but are more complicated in terms of implementation. SCR technologies are also expensive due to the need for precious metal catalysts and additional equipment for flue gas conditioning (e.g., for preheating, removal from particulate matter and SO₂). Moreover, secondary measures for NO_x, like selective noncatalytic reduction, is inseparable from NH₃, HCN, and N₂O byproducts that can cause fouling and corrosion of downstream equipment. There is a risk that NH₃ emissions from small and medium power boilers will be controlled by new restrictions in the near future. Operation of these systems could cause technical problems and sudden technical failure [8,9]. Flue gas desulfurization techniques require additional investment and could also cause emission problems [9,10]. Moreover, application of these post combustion methods is not always implemented because of the variety of boiler constructions and emission reduction tasks that are sometimes hardly feasible.

The main focus should be primary measures such as flue gas recirculation (FGR) and limited excess air, which can be used for emission reduction without significant investment; flue gas recirculation technology is common and used in many modern solid biomass boilers for temperature regulation in combustion chambers to avoid ash and plaque agglomeration. Moreover, this measure faces smaller environmental and technical issues compared with secondary “end-of-pipe” technologies because no chemicals are used.

2. Literature Review

Though the main purpose of FGR is to reduce the temperature by protecting the combustion chamber and grating from ash agglomeration, flue gas recirculation is also known as an effective measure to reduce thermal NO_x generation. The influence of FGR on thermal NO_x is well studied. Glaborg et al. [11] stated that total NO_x consists of three main sources, i.e., “thermal NO_x”, “prompt NO_x”, and “fuel NO_x”. It is estimated that “thermal NO_x” occurs at combustion temperatures over 1400 °C [12]. During this high temperature combustion, high activation energy is used to combine nitrogen and oxygen in the combustion air. Such temperatures are not common during biofuel combustion because of its relatively high moisture content. “Prompt NO_x” occurs via the attack of a CH radical on the N₂ triple bond. This is a two-way reaction, and the amount of “prompt NO_x” is negligible. It is estimated that more than 80% of total NO_x is generated from the “fuel NO_x” during oxidation of char-N and volatiles containing NH₃ and HCN [12]. The quantity of oxidized nitrogen depends on the fuel structure, combustion temperature, and stoichiometric ratio [11]. A lack of research exists investigating the relationship between FGR and “fuel NO_x” (particularly SO₂ emissions) in moving-grate fire tube biofuel boilers by burning agricultural waste.

Studies of moving grate boilers [13–15] mainly focused on the effect of flue gas recirculation, particularly on NO_x and other component concentrations, excluding SO₂ emissions. Tu et al. [13] used the computational fluid dynamics (CFD) calculation method in a 40 t/h biofuel steam boiler to determine internal flue gas recirculation (IFGR) influence in order to obtain “prompt”, “thermal”, and “fuel” NO_x. The authors determined that flue gas recirculation managed to change combustion flame kernel size and reduced “thermal NO_x” due to mitigation of combustion temperatures. Qun Chen et al. [14] compared measurements and mathematical modeling results to determine the effect of FGR on NO_x and CO emissions in a 500 kW boiler and found a relatively close match between the results, showing that NO_x and CO reactions to FGR could be opposite. Liu et al. [16] investigated the influence of flue gas composition and temperature on economizer efficiency and NO_x emissions in a 500 t/d incinerator. Despite the fact that this research broadened the understanding of the predominant mechanisms of NO_x in the moving-grate boilers, the effect of flue gas recirculation, combined with the partly gasification regime, on various emissions of grate-firing boilers was not investigated. These studies could be extended regarding FGR and excess air effects on SO₂ emissions.

A small number of publications [16,17] examined the dependence of SO₂ and NO_x emissions on primary measures in oxyfuel, fluidized bed furnaces. De las Obras-Loscertales et al. [16] examined NO, N₂O, SO₂, and CO emissions by creating artificial flue gas recirculation and temperature conditions, demonstrating that SO₂ gas recirculation correlates with CO and NO_x emissions. Lupiáñez et al. [17] determined the influence of combustion temperature on SO₂ and NO_x emissions. Simultaneously, a correlation between NO_x and CO and excess air (oxygen quantity) emissions was observed. A relationship between NO_x and excess air was also observed by Glaborg et al. [11] and Houshfar et al. [12]. Unfortunately, the impacts of excess air and flue gas recirculation on SO₂ were not observed. Firing conditions obtained in both studies radically differed from those of a moving grate, making adaptation of the results difficult; this needs to be investigated further.

Most of the studies focused on the application of a single measure, i.e., FGR or excess air, to certain emissions. The effect of flue gas recirculation combined with partial gasification mode on various combustion boiler emissions was rarely studied. This paper identifies the effects of a combination of flue gas recirculation and combustion regimes with different CO concentrations on SO_x, NO_x, other sulfur and nitrogen compounds, and hydrocarbons, as these measures can be easily implemented in many industrial boilers.

3. Materials and Methods

3.1. Description of the Small-Scale, Biomass-Fired Grate Boiler

Experimental research was carried out using a 20 kW biofuel boiler model stand, as shown in Figure 1. The research stand manufacturer company “Enerstena” (Kaunas, Lithuania) is a manufacturer of industrial boilers for biomass combustion. The experimental stand came with the same basic performance features as industrial biofuel boilers. Inside the adiabatic combustion chamber, high combustion temperatures (950–1200 °C) can be achieved. The experimental stand consisted of the following elements: a two-stage combustion chamber, boiler, an automatic fuel supply system, a variable speed moving grate, and adjustable primary and secondary air. A precise quantity of fuel and air supply was ensured by frequency converters. Heat was removed through the plate heat exchanger.

The fuel was supplied from the bunker (5) to the furnace at a set speed by a screw conveyor (6) controlled by a frequency converter. The rows of grate bars (7) were moved by a mechanical drive which was also controlled by the frequency converter. Combustion products were fed through the water heating boiler located above the furnace. Combustion air was supplied by a fan through the primary (13) and secondary (14) air inlets. Flow of the primary air was set using a valve (11) and supplied under the grate. It passed through the grate slots and supported the burning process at the primary combustion zone (1). Secondary air was regulated using another valve (12) and supplied to the secondary combustion zone above the chamotte arc (3) by ducts arranged on the sides of the furnace

ratio R_{ratio} was expressed as a ratio of recirculated flue gas and combustion air, as shown in the following Equation (1):

$$R_{ratio} = 100 - \left(\frac{O_{2PA} - O_{2FG}}{O_{2AA} - O_{2FG}} \right) \cdot 100 \quad (1)$$

where R_{ratio} is the flue gas recirculation ratio, O_{2PA} is the oxygen concentration in primary air, O_{2AA} is the oxygen concentration in the atmospheric air, and O_{2FG} is the oxygen concentration in the flue gas.

Our earlier studies determined that the level of flue gas compound concentrations was significantly influenced by the movement of the grate [3] in a short time period, about 20 s. For example, the concentration of CO varies significantly by a few times and tens of percent of NO_x and other components during grate movement. Therefore, in order to eliminate the influence of grate movement, the measurement results were sorted by CO level, dividing them into the following four groups:

1. CO concentrations up to 200 mg/m³;
2. CO concentrations between 300 and 500 mg/m³;
3. CO concentrations between 1000 and 1500 mg/m³;
4. CO concentrations between 2000 and 2500 mg/m³.

Grouping of results yielded averaged results from tens of hundreds of measurements for each CO level group.

3.3. Experimental Fuel

During the research, sunflower hull pellets were used as a fuel with the aim of highlighting the correlation between primary measures and flue gas emissions. Sunflower hull pellets were chosen because they have higher contents of nitrogen and sulfur, allowing higher initial concentrations of NO_x and SO₂ and a clearer determination of the effect of the investigated methods on their concentrations in flue gases. The correlation of sulfur and nitrogen composition with SO₂ and NO_x levels was investigated [4,5]. Sunflower hulls are produced when using sunflowers to make condiments, sunflower oil and snacks. Sunflower husks are among the largest forms of agricultural waste in Europe. More than three quarters of all sunflower seeds are grown on the European continent, especially in Eastern Europe. Sunflower husk pellets have a high energy use potential.

The physical and chemical properties of the experimental fuel were determined in accredited laboratories. Physical properties, like lower calorific value (LCV), were determined according to EN ISO 18125:2017 [18], ash content was determined according to EN ISO 18122:2016 [19] and moisture was determined according to EN ISO 18134-1:2016 [20]. The chemical composition of nitrogen was determined with reference to EN ISO 16948:2015 [21]. Both sulfur and chlorine components were determined according to the common standard EN ISO 16994:2016 [22]. A summary of the physical and chemical characteristics is presented in Table 1. For physical and chemical comparison, the sunflower hull pellets are compared with wood pellets.

Table 1. Comparison of sample characteristics.

Fuel	LCV, MJ/kg	Ash, %	Moisture, %	N, %	S, %	Cl, %
Wood pellets	17.10	1.2	8.7	0.20	0.01	0.018
Sunflower hull pellets	16.03	2.9	8.6	0.51	0.08	0.044

Sunflower seed hull pellets have a somewhat higher net calorific value compared to wood pellets. Nevertheless, this kind of fuel is characterized by higher quantities of ash and elements such as N, S, and Cl. Sunflower hull pellets contain more than 2.5 times more N, 8 times more S, and approximately 2.4 times more Cl compared to wood pellets.

4. Results

4.1. Flue Gas Recirculation Influence on Combustion Temperatures

The temperatures of combustion products were measured by thermocouples in the primary and secondary combustion zones at stationary points of the experimental stand. By changing the amount of recirculated flue gas, the effect on combustion zone temperature was determined. The effect on the temperature at the secondary combustion chamber (see Figure 2) was observed to be negligible. The combustion process in the combustion chamber was close to adiabatic and the effect of the flue gas recirculation on the heat transfer was insignificant. However, the effect of flue gas recirculation on temperature was significant in the primary combustion zone. Without FGR, the temperature in the primary combustion zone reached 890 °C. At the maximum FGR ratio of 50%, the temperature decreased to 750 °C.

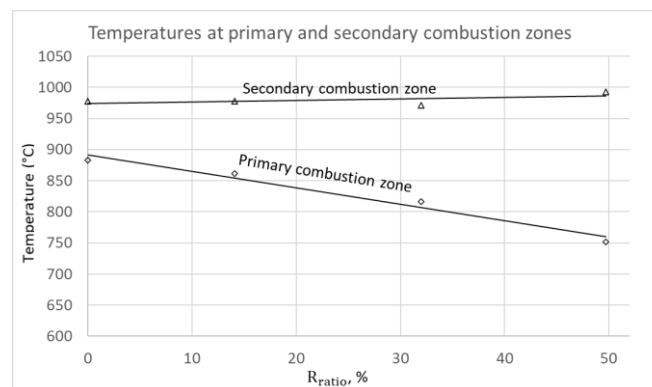


Figure 2. Influence of flue gas recirculation ratio on temperatures in the combustion chamber of the experimental stand.

Despite this temperature decrease in the primary combustion zone, a decrease in the boiler power output was not observed. This could be explained by Tu et al.'s [13] numerical simulation of a biomass-fired grate boiler. Simulations demonstrated that flue gas recirculation has a higher impact on maximum flame temperature reduction. It was also observed that temperatures correlate with flame kernel size. The higher the flame kernel volume, the smaller the temperature peak. These aspects, as well as oxygen concentration in the flame, may have an impact on emissions.

4.2. Combustion Sufficiency and Flue Gas Recirculation Influence on NO_x and SO_2 Emissions

Combustion completeness is described by the level of carbon monoxide (CO). At the same time, this parameter is widely used for boiler adjustment. Different amounts of excess air were maintained to create various combustion qualities. Combustion quality is characterized by the level of the main incomplete oxidation compound, i.e., carbon monoxide (CO). Because emissions concentrations are strongly dependent on the CO level, research results were sorted according to certain CO concentration levels, namely, up to 200 mg/m³, between 300 and 500 mg/m³, between 1000 and 1500 mg/m³, and between 2000 and 2500 mg/m³. This sorting method allowed a clearer determination of the effect of FGR on the investigated components of flue gases.

The effect of oxygen concentration in flue gas on CO, SO_2 , SO_3 , and NO_x concentrations without FGR is shown in Figure 3 for wood pellets (a) and sunflower hull pellets (b). The reduction in excess air (oxygen concentration) demonstrated that incomplete combustion has a significant effect on NO_x emission. During the combustion of wood and sunflower pellets at higher excess air (CO < 200 mg/m³), the measured NO_x levels reached 360 mg/m³ and 500 mg/m³, respectively. By reducing excess air and increasing CO gradually, NO_x decreased to 160 mg/m³ and 300 mg/m³. Excess air was also shown

to influence SO_2 ; however, this effect was opposite to that on NO_x , i.e., with an increasing CO concentration, the level of SO_2 also increased.

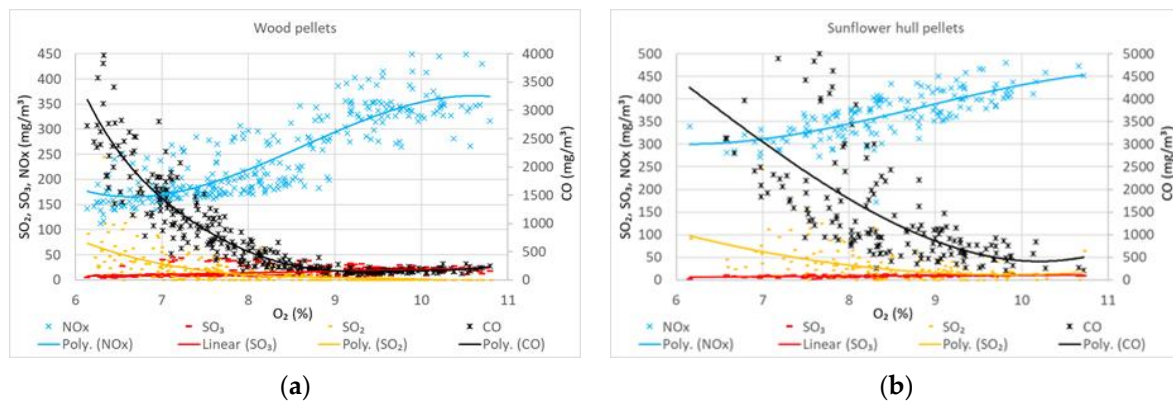


Figure 3. Effect of oxygen concentration in flue gas on CO, SO_2 , SO_3 , and NO_x concentrations for wood pellets (a) and sunflower hull pellets (b).

Research into the impact of FRG on concentrations of NO_x and SO_2 was conducted. The results demonstrated that increasing FGR ratio decreased nitrogen compound concentrations, as shown in Figure 4a. At an FGR ratio of 50%, i.e., when the O_2 concentration in the primary air was 13.6%, NO_x was reduced: (1) by $111 \text{ mg}/\text{m}^3$, wherein CO was lower than $200 \text{ mg}/\text{m}^3$; (2) by $116 \text{ mg}/\text{m}^3$, wherein CO was between 300 and $500 \text{ mg}/\text{m}^3$; (3) by $90 \text{ mg}/\text{m}^3$, wherein CO was between 1000 and $1500 \text{ mg}/\text{m}^3$; (4) by $71 \text{ mg}/\text{m}^3$, wherein CO was between 2000 and $2500 \text{ mg}/\text{m}^3$. The results showed that the higher insufficient combustion level generated the lower impact on NO_x reduction could be maintained during the same FGR.

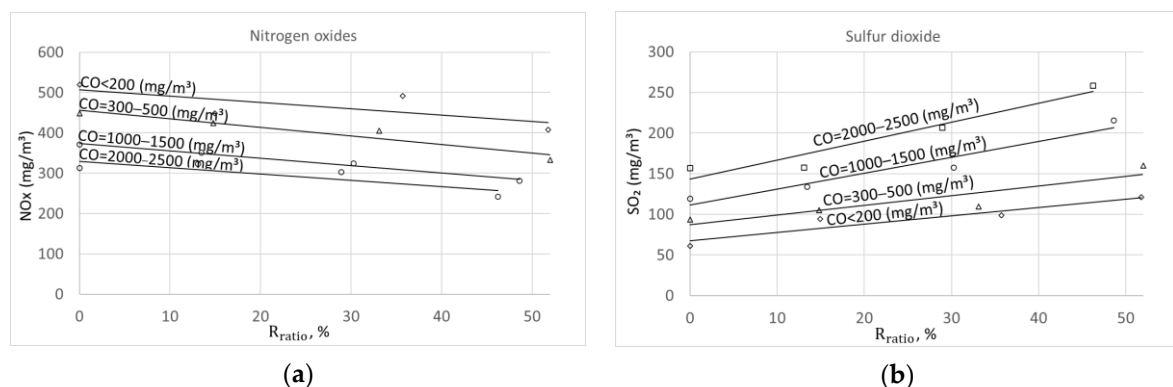


Figure 4. Effect of FGR and CO concentrations levels on NO_x (a) and SO_2 (b) concentrations.

Opposite tendencies of SO_2 were observed in Figure 4b. The lowest concentrations of sulfur dioxide were detected under high-quality combustion and reached around $60 \text{ mg}/\text{m}^3$. With the increase in CO, SO_2 emissions increased gradually and reached $150 \text{ mg}/\text{m}^3$. At an FGR ratio of 50%, SO_2 increased: (1) by $60 \text{ mg}/\text{m}^3$, wherein CO was lower than $200 \text{ mg}/\text{m}^3$; (2) by $67 \text{ mg}/\text{m}^3$, wherein CO was between 300 and $500 \text{ mg}/\text{m}^3$; (3) by $96 \text{ mg}/\text{m}^3$, wherein CO was between 1000 and $1500 \text{ mg}/\text{m}^3$; (4) by $102 \text{ mg}/\text{m}^3$, wherein CO was between 2000 and $2500 \text{ mg}/\text{m}^3$.

4.3. Flue Gas Recirculation Influence on Concentrations of Nitrogen Compounds

Generally, flue gas recirculation is used for thermal NO_x reduction, especially during the combustion of fossil fuels. While burning biofuels of lower calorific value and relatively high moisture content, thermal NO_x is considered to be negligible due to insufficient tem-

perature. It is estimated that considerably higher quantities of thermal NO_x are generated at temperatures above 1400 °C [12]. However, this temperature boundary is not strict and thermal NO_x should not be ignored.

Concentrations of NO, NO₂, N₂O, HCN, NH₃, and NO_x compounds were measured under different combustion conditions. Figure 5 presents different nitrogen compound emissions cases under different CO levels by fuel combustion. During the biomass combustion process, a large part of the nitrogen leaves the fuel layer as volatile substances and forms NO with a partial oxygen deficiency.

The average NO concentrations decreased from 340 to 210 mg/m³ without FGR and from 260 to 160 mg/m³ with an FGR ratio of 50% under different combustion qualities in both cases. Flue gas recirculation and incomplete combustion products affected N₂O in the opposite way. At relatively low CO levels (<200 mg/m³), N₂O concentrations slightly increased from 0 mg/m³ without FGR to 1 mg/m³ with 50% FGR. During incomplete combustion (CO = 2000–2500 mg/m³), N₂O increased from 3 to 5 mg/m³. Flue gas recirculation decreased the concentration of NO₂ from 2 to 0.75 mg/m³ during both sufficient and insufficient combustion, but stayed within the limits of accuracy due to low concentration levels.

It was observed that the higher the CO concentration, the stronger the FGR effect on HCN concentration. This could explain why less “fuel NO” was produced as the ratio of FGR increased. Surprisingly, even without selective noncatalytic reduction, small quantities of ammonia NH₃ were also detected. CO was observed to have a higher impact on NH₃ concentrations compared with flue gas recirculation. When CO levels were under 200 mg/m³, ammonia concentration decreased from 0.7 to 0.4 mg/m³ as a result of flue gas recirculation. However, under insufficient combustion, CO reached 2000–2500 mg/m³, with initial NH₃ levels being several times higher and decreasing from 2 mg/m³ to 0.5 mg/m³.

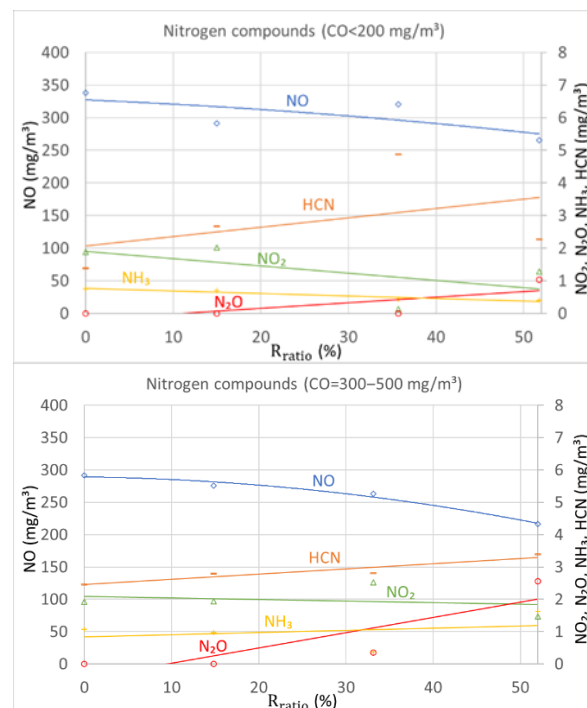


Figure 5. Cont.

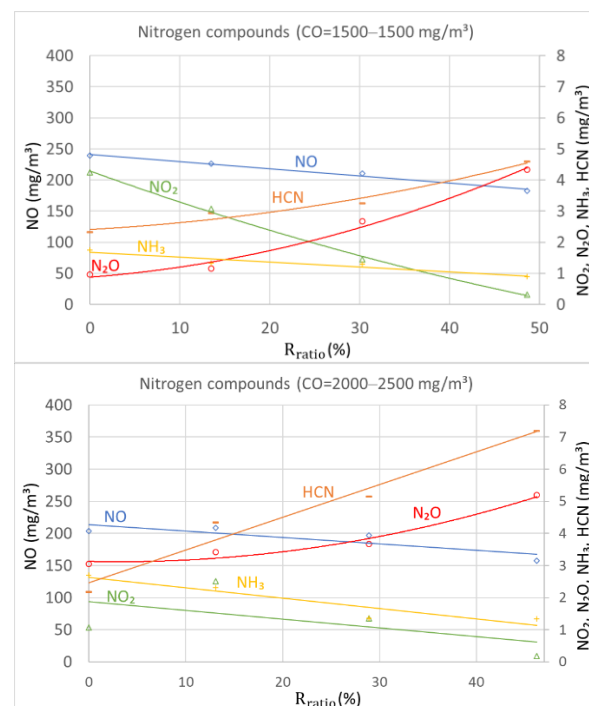


Figure 5. Effect of FGR on nitrogen compounds at different CO concentrations.

4.4. Flue Gas Recirculation Influence on Concentrations of Sulfur Compounds

SO₂ is the major sulfur compound that is restricted by norms for boiler emissions. SO₃ and H₂S are compounds that cause the corrosion of boiler metals. SO₃ in the flue gas pathway forms sulfuric acid. Acid condenses on the low-temperature surface of a boiler (heat exchanger tubes), causing corrosion. H₂S and HCl also cause corrosion, which can be particularly intense for metals working at high temperatures.

Concentrations of the sulfur compounds SO₂, SO₃ and H₂S were measured to determine the influence of flue gas recirculation. HCl concentration was also measured, but measurements were negligible and did not exceed 2 mg/m³; therefore, this measurement is not shown in the graphs due to clarity. Nevertheless, this certain tendency was quite clear. Combustion sufficiency, i.e., CO level, was observed to have a greater influence on HCl reduction compared to flue gas recirculation. Combustion with low levels of CO in the flue gas reduced HCl emissions.

The measurements shown in Figure 6 demonstrated that SO₂ concentration increased with increasing flue gas recirculation ratio and combustion insufficiency. These trends were reverse-compared in terms of the FGR effect on NO_x. The same effect was observed by Obras-LoCERTALE et al. [16]. Average SO₂ concentrations increased from 60 to 150 mg/m³ without FGR and from 120 to 260 mg/m³ with an FGR ratio of 52% under different combustion regimes. Flue gas recirculation had almost no effect on SO₃ concentration under the regular burning process, as shown in Figure 4. Only high concentrations of CO (CO = 2000–2500 mg/m³) were shown to have a positive effect on SO₃ concentration reduction. SO₃ emissions decreased from 8.3 to 4.5 mg/m³ with an FGR ratio of 47%. An analogous effect of flue gas recirculation on H₂S concentration was observed. The effect of recirculation on H₂S was negligible during conditions of sufficient combustion. On the other hand, during sufficient combustion, flue gas recirculation influenced H₂S significantly. When CO reached 2000–2500 mg/m³, the concentration of hydrogen sulfide decreased from 55 mg/m³ to 0 at an FGR ratio of 50%.

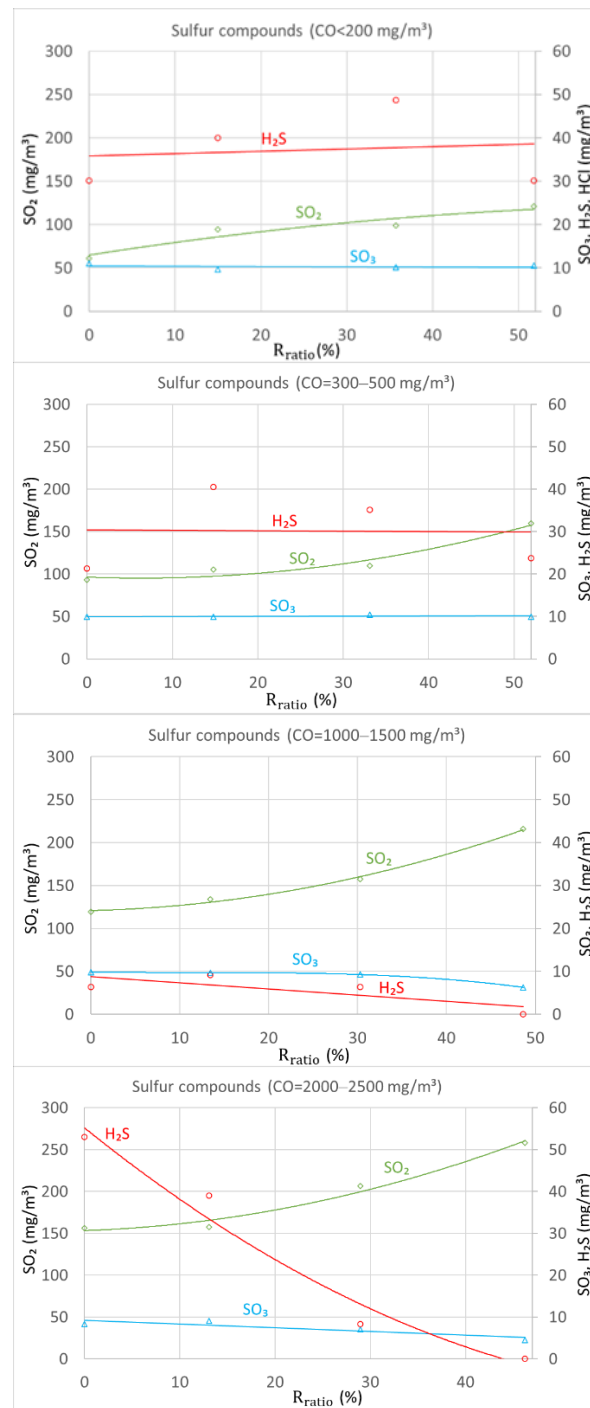


Figure 6. Effect of FGR on sulfur compounds at different CO concentrations.

According to the calculated sulfur quantity in sunflower hull pellets (see Table 1), the theoretical maximum SO_2 concentration was around 270 mg/m³ in the case of full oxidation of fuel sulfur. However, Figures 3, 4 and 6 show that, in practice, a lower concentration of SO_2 was formed. In the case of higher CO concentrations and higher FGR ratios, SO_2 approached the theoretically calculated concentration. The fact that the formation of SO_2 was not inhibited by flue gas recirculation and incomplete combustion could indicate that the oxidation of sulfur compounds occurs mainly in the space above the fuel layer, together with others emitted from volatile fuel substances.

4.5. Flue Gas Recirculation Influence on Concentrations of Hydrocarbon Compounds

Concentrations of hydrocarbon compounds are affected by flue gas recirculation and combustion sufficiency differently (see Figure 7). It was observed that hydrocarbon compound concentrations tended to differ during various levels of CO. The results showed that concentrations of ethanol (C_2H_6O) increased in almost all cases of combustion quality. The average concentration of ethanol increased from 6.0 to 12.5 mg/m^3 . The opposite effect was observed with ethane (C_2H_6) and benzene (C_6H_6) emissions. Concentrations were reduced from 7.0 to 2.5 mg/m^3 and from 6.0 to almost 0 mg/m^3 , respectively. However, propylene (C_3H_6), acetic acid ($C_2H_4O_2$), and acrolein (C_3H_4O) showed no significant relationships with combustion completeness. Levels of these compounds averaged between 3.5 and 6.5 mg/m^3 .

With relatively low levels of CO, i.e., up to 500 mg/m^3 , concentrations of ethane and benzene decreased with the rising FGR ratio in most cases. Concentrations of acetic acid remained stable throughout all FGR ratios and almost all CO levels. Under incomplete combustion, i.e., CO = 2000–2500 mg/m^3 conditions, concentrations of acetic acid started to decrease with the increasing FGR ratio. Other compounds, like propylene, ethanol, and acrolein, demonstrated no clear relationships with flue gas recirculation ratio.

The graphs show that the influences of FGR ratio and combustion sufficiency on hydrocarbon emissions are different. It is difficult to determine whether the increase in FGR ratio reduces or increases combustion quality. This could be explained by competing processes: (1) the reduction in combustion temperature by dilution with lower temperature flue gas (see Figure 2), causing reduced oxidation reaction rates of various hydrocarbons; (2) the improvement of combustion sufficiency due to turbulence, i.e., longer residence time [6]; (3) the change in the oxygen concentration in the combustion zone.

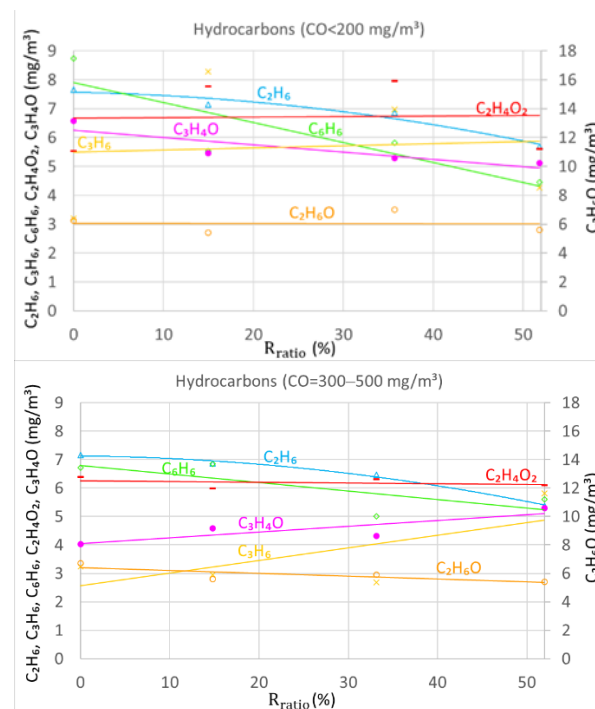


Figure 7. Cont.

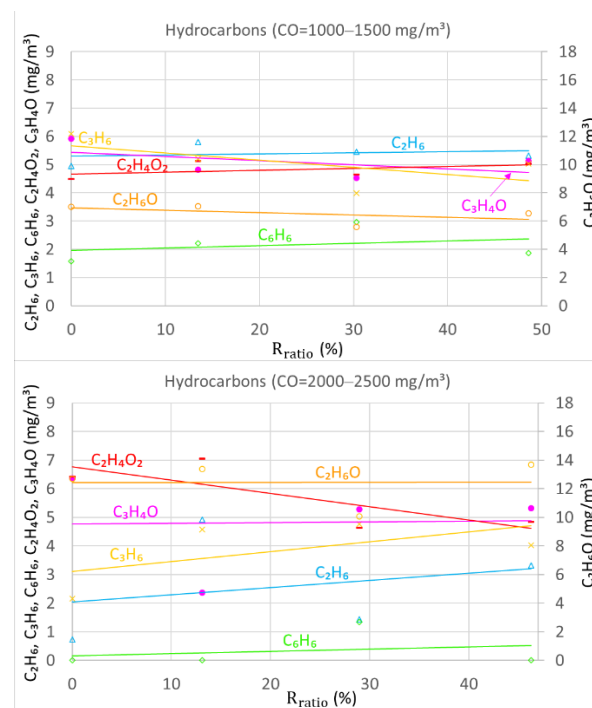


Figure 7. Effect of FGR on hydrocarbon compounds at different CO concentrations.

Nevertheless, it was clearly observed that, under insufficient combustion conditions, the concentrations of hydrocarbon compounds were significantly more dispersed compared to cases of sufficient combustion. More complex hydrocarbons, e.g., $C_2H_4O_2$, C_3H_4O , and C_2H_6O , occurred at higher concentrations. At the same time, concentrations of light hydrocarbons e.g., C_3H_6 , C_2H_6 , and C_6H_6 , decreased.

5. Discussion

5.1. Mechanism of Nitrogen Compound Relationships with Combined Primary Measures

Measurements of thermocouples in the furnace demonstrated that temperature in the primary combustion zone (above the fuel bed) is particularly affected by flue gas recirculation. Tu et al. investigated the effect of flue gas recirculation on temperature by using a reduced order modeling calculation method [13]. Calculations demonstrated that combustion temperature could be lowered by $80\text{ }^\circ\text{C}$ at an FGR ratio of 40%. Experimental results of this study showed a similar $100\text{ }^\circ\text{C}$ decrease at the same FGR ratio.

The presence of CO in flue gas is a good indicator of combustion quality. Incomplete combustion can be caused by insufficient stoichiometry or extremely low temperatures. Low temperature is not the reason as long as combustion is maintained in the adiabatic chamber. Sufficient stoichiometry or excess air is a significant factor for NO_x generation. During fuel-lean and stoichiometric ratio conditions, NH₃ and HCN form NO. In contrast, during fuel-rich conditions, these NO precursors can produce N [23]. The lack of oxygen above the fuel bed caused by high concentrations of volatile substances effectively reduced NO_x.

It was confirmed by the experiments of Lupiáñez et al. that NO_x emissions could be significantly reduced by CO increase with different types of fuel. The same trends were obtained with both conventional air firing and oxyfuel modes [17]. Carbon monoxide and light hydrocarbons reduce NO_x emissions according to the following reaction in Equation (2):



Most research findings were obtained while studying the impact of FGR on NO_x [6,13,19]. These studies focused on internal flue gas recirculation (IFGR) on high-

power, water-pipe boilers. Liu et al. [15] stated that FGR reduces NO_x environmental impact in two separate ways. Firstly, measurement using a 500 t/d incineration plant showed that FGR has a positive effect on NO_x concentration reduction in flue gas. Secondly, FGR increases boiler efficiency, i.e., it reduces fuel consumption and environmental impacts by increasing the flue gas velocity and the heat transfer coefficient in boiler heat exchangers.

Yin et al. also excluded some benefits of local (internal) flue gas recirculation zones for NO_x reduction [6]. Internal flue gas recirculation zones create a longer flue gas pathway and residence time for CO and volatile burnout. At the same time, flue gas recirculation reduces the combustion temperature and thermal NO_x concentrations. Moreover, FGR could reduce NO_x emissions due to longer flue gas pathways and extended residence time for CO and NO_x reactions. This could explain why most nitrogen compounds (see Figure 5) were observed to decrease along with most of the hydrocarbons (see Figure 7).

A simulation with Aspen Plus by Li et al. [24] was built to investigate the behavior of emissions in volumetric combustion by using internal flue gas recirculation. Li et al. observed that NO_x concentration was proportional to quantities of volatile matter, where the predominant combustion consisted of gas-phase reactions. In addition, biomass contains more oxygen than wood. During biomass combustion, less air is required to sustain the combustion and it is easier to achieve a local reducing environment for NO_x reduction.

A small number of studies demonstrated opposite trends. Qun Chen et al. [14] performed mathematical modeling work detailing Fluid Dynamic Incineration Code (FLIC) and Ansys Fluent fluid simulation codes to determine a 500 kW wood chip boiler's performance in terms of flue gas emissions with and without flue gas recirculation. Qun Chen et al. determined that CO emissions increased, which was in contrast to our results. This could be explained due to the furnace overcooling effect [25]. At relatively low temperatures, CO oxidation is insufficient, even though relatively cool, recirculated flue gas decreases combustion temperature over the fuel bed. This could be key to reducing thermal NO_x, even though its role is not significant compared with fuel NO_x due to lower (800–1100 °C) temperatures.

In summary, Liu et al. [15] distinguished three mechanisms of NO_x reduction by FGR: (1) FGR has a positive effect on NO_x emissions reduction by reducing the combustion temperature (flue gas dilution with inert gas), although it should be emphasized that the temperature for the significant formation of thermal NO in the furnace combustion chamber is insufficient [6,14,15]; (2) FGR reduces partial oxygen pressure and reaction rate during combustion; (3) FGR creates a disturbance in the furnace that reduces the generation of prompt NO_x.

5.2. Mechanism of Sulfur Compound Relationships with Combined Primary Measures

Sulfur oxides are emitted during the combustion of sulfur-containing fuel. It is estimated that 57–65% of sulfur is released as SO_x, while the remaining parts bind with ash. Within this, 95% of total SO_x is SO₂ and the remaining 5% consists of SO₃ [18] or other compounds. These proportions change depending on the combustion conditions. Familiar SO₂/SO₃ proportions were observed in this study (see Figure 6).

Moreover, certain amounts of H₂S and a comparably huge quantity of alkali sulfates [18,26,27] can be formed. Sulfates can settle on boiler surfaces or can form fly ashes. Previous studies [27–29] showed that S release is highly dependent on combustion conditions.

Sunflower hull pellet ash contains significant levels of CaO, approximately 15.8% [30]. During combustion, Ca and S elements react, forming calcium sulfate (CaSO₄). CaSO₄ forms aerosols at relatively high temperatures, which are dragged from the fuel bed along with flue gas. Lupiáñez et al. carried out experiments by studying SO₂ emissions during fluidized bed combustion and determined that at temperatures greater than 850 °C, CO

and flue gas recirculation promote SO₂ release from CaSO₄, as shown in the equation below [17]:



Higher levels of CO during FGR react with CaSO₄, forming SO₂. Even though this theory was developed by considering sulfation mechanisms in limestone sorbent, the same mechanism could explain the SO₂ increase in the reciprocating grate boiler model (see Figure 4). High concentrations of CO may disrupt calcium sulfate, producing SO₂ emissions in return. Applying flue gas recirculation to local regions above the fuel bed, i.e., the primary combustion zone with a higher oxygen deficiency, upbuilds CO concentration. In contrast, the SO₂ capture mechanism could be possible. During biomass combustion, alkaline ash is formed. Spliethoff and Hein et al. [31,32] determined that alkaline ash could capture certain amounts of SO₂ and CO₂ compounds and act as a sorbent.

6. Conclusions

The measured combustion temperatures were insufficient for “thermal” NO_x generation, allowing us to consider that flue gas recirculation reduced mostly “fuel” NO_x. The effect of FGR on NO_x concentrations was less than that of fuel combustion with CO but, when combined, these abatement measures reduced NO_x levels by up to 50% when NO_x was mainly formed from fuel nitrogen.

NO_x concentrations lower than 300 mg/m³ could be maintained with FGR ratios of at least 20% combined with CO levels of 2000–2500 mg/m³ by burning sunflower pellets. To meet the requirements of SO₂ 200 mg/m³, the flue gas recirculation ratio must be kept under 30% with the same CO level for sunflower pellets.

The results showed that nitrogen compound (N₂O, HCN, NH₃, and NO₂) concentration levels were low. Nevertheless, flue gas recirculation had a positive effect on by decreasing NH₃ and NO₂ emissions and a negative effect on the nitrogen compounds N₂O and HCN.

Flue gas recirculation, as well as CO, increased SO₂ concentration close to the theoretically calculated (maximum) emission level.

Flue gas recirculation had a minor effect on reducing H₂S and SO₃ concentrations after complete combustion. An opposite effect was seen and, therefore, incomplete combustion was maintained.

Under relatively sufficient combustion, concentrations of C₂H₆ and C₆H₆ decreased with the rise in the FGR ratio. Concentrations of C₂H₄O₂ decreased with increasing FGR ratio under low-quality combustion. Other compounds, e.g., C₃H₆, C₂H₆O, and C₃H₄O, demonstrated no clear relationship with the flue gas recirculation ratio. Moreover, under low-quality combustion, more complex hydrocarbons undergo flue gas composition.

Author Contributions: Conceptualization, A.J., K.B.; methodology, A.J., K.B.; investigation, A.J., K.B.; resources, A.J., K.B.; data curation, A.J., K.B.; writing—original draft preparation, A.J., K.B.; writing—review and editing, A.J., K.B.; visualization, A.J., K.B.; supervision, A.J., K.B.; funding acquisition, A.J., K.B. All authors have read and agreed to the published version of the manuscript.

Funding: This research received no external funding.

Institutional Review Board Statement: Not applicable.

Informed Consent Statement: Not applicable.

Data Availability Statement: Not applicable.

Conflicts of Interest: The authors declare no conflict of interest.

References

1. European Commission. Eurostat. Available online: https://ec.europa.eu/eurostat/statistics-explained/index.php?title=Archive:Wood_as_a_source_of_energy&oldid=318356 (accessed on 31 December 2020).
2. European Commission. Directorate Generale, Joint Research Centre. Available online: https://publications.jrc.ec.europa.eu/repository/bitstream/JRC109354/biomass_4_energy_brief_online_1.pdf (accessed on 31 December 2020).
3. Jančauskas, A.; Buinevičius, K. Grate-firing boilers grate movement impact onto NO_x, SO₂ Emissions. *Mechanika* **2020**, *26*, 503–510. [CrossRef]
4. Chen, T.M.; Gokhale, J.; Shofer, S.; Kuschner, W.G. Outdoor air pollution: Nitrogen dioxide, sulfur dioxide, and carbon monoxide health effects. *Am. J. Med. Sci.* **2007**, *333*, 249–256. [CrossRef] [PubMed]
5. Wang, L.; Becidan, M.; Skreiberg, Ø. Sintering behavior of agricultural residues ashes and effects of additives. *Energy Fuels* **2012**, *26*, 5917–5929. [CrossRef]
6. Yin, C.; Rosendahl, L.A.; Kær, S.K. Grate firing of biomass for heat and power production. *Prog. Energy Combust. Sci.* **2008**, *34*, 725–754. [CrossRef]
7. Mladenović, M.; Paprika, M.; Marinković, A. Denitrification techniques for biomass combustion. *Renew. Sustain. Energy Rev.* **2018**, *82*, 3350–3364. [CrossRef]
8. Javed, M.T.; Irfan, N.; Gibbs, B.M. Control of combustion-generated nitrogen oxides by selective non-catalytic reduction. *J. Environ. Manag.* **2007**, *83*, 251–289. [CrossRef]
9. Tillman, D.A. *The Development of Postcombustion Control Technology. Coal-Fired Electricity and Emissions Control*, 1st ed.; Butterworth-Heinemann: Oxford, UK, 2018; pp. 237–276.
10. Gutiérrez, F.J.; Ollero, P.; Cabanillas, A.; Otero, J. A technical pilot plant assessment of flue gas desulfurisation in a circulating fluidised bed. *Adv. Environ. Res.* **2002**, *7*, 73–85. [CrossRef]
11. Glaborg, P.; Jensen, A.D.; Johnsson, J.E. Fuel nitrogen conversion in solid fuel fired systems. *Prog. Energy Combust. Sci.* **2003**, *29*, 89–113. [CrossRef]
12. Houshfar, E.; Løvas, T.; Skreiberg, Ø. Experimental investigation on NO_x reduction by primary measures in biomass combustion: Straw, peat, sewage sludge, forest residues and wood pellets. *Energies* **2012**, *5*, 270–290. [CrossRef]
13. Tu, Y.; Zhou, A.; Xu, M.; Yang, W.; Siah, K.B.; Subbaiah, P. NO_x reduction in a 40 t/h biomass fired boiler using internal flue gas recirculation technology. *Appl. Energy* **2018**, *220*, 962–973. [CrossRef]
14. Chen, Q.; Zhang, X.; Zhou, J.; Sharifi, V.N.; Swithenbank, J. Effects on flue gas recirculation on emissions from small scale wood chips fired boiler. *Energy Procedia* **2015**, *66*, 65–68. [CrossRef]
15. Obras-Loscertales, M.; Rufas, A.; de Diego, L.F.; Garcia-Labiano, F.; Gayán, A.; Abad, A.; Adánez, J. Effects of temperature and flue gas recycle on the SO₂ and NO_x emissions in an oxy-fuel fluidized bed combustor. *Energy Procedia* **2013**, *37*, 1275–1282. [CrossRef]
16. Liu, J.; Luo, X.; Yao, S.; Li, Q.; Wang, W. Influence of flue gas recirculation on the performance of incinerator—waste heat boiler and NO_x emission in a 500 t/d waste-to-energy plant. *Waste Manag.* **2020**, *105*, 450–456. [CrossRef] [PubMed]
17. Lupiáñez, C.; Guedea, I.; Bolea, I.; Díez, L.I.; Romeo, L.M. Experimental study of SO₂ and NO_x emissions in fluidized bed oxy-fuel combustion. *Fuel Process. Technol.* **2013**, *106*, 587–594. [CrossRef]
18. EN ISO 18125:2017 Solid Biofuels—Determination of Calorific Value. Available online: <https://www.iso.org/standard/61517.html> (accessed on 10 January 2021).
19. EN ISO 18122:2016 Solid Biofuels—Determination of Ash Content. Available online: <https://www.iso.org/standard/61515.html> (accessed on 10 January 2021).
20. EN ISO 18134-1:2016 Solid Biofuels—Determination of Moisture Content—Oven Dry Method—Part 2: Total Moisture—Simplified Method. Available online: <https://www.iso.org/standard/71536.html> (accessed on 10 January 2021).
21. EN ISO 16948:2015 Solid Biofuels—Determination of Total Content of Carbon, Hydrogen and Nitrogen. Available online: <https://www.iso.org/standard/58004.html> (accessed on 10 January 2021).
22. EN ISO 16994:2016 Solid Biofuels—Determination of Total Content of Sulfur and Chlorine. Available online: <https://www.iso.org/standard/70097.html> (accessed on 10 January 2021).
23. Roy, Y.; Lefsrud, M.; Orsat, V.; Fillion, F.; Bouchard, J.; Nguyen, Q.; Dion, L.M.; Glover, A.; Madadian, E.; Lee, C.P. Biomass combustion for green house carbon dioxide enrichment. *Biomass Bioenergy* **2014**, *66*, 186–196. [CrossRef]
24. Li, J.; Zhang, X.; Yang, W.; Blasiak, W. Effects of flue gas internal recirculation on NO_x and SO_x emissions in co-firing boiler. *Int. J. Clean Coal Energy* **2013**, *2*, 13–21. [CrossRef]
25. Roy, M.M.; Dutta, A.; Corscadden, K. An experimental study of combustion and emissions of biomass pellets in a prototype pellet furnace. *Appl. Energy* **2013**, *2*, 298–307. [CrossRef]
26. Obernberger, I.; Brunner, T.; Bärnthaler, G. Chemical properties of solid biofuels—significance and impact. *Biomass Bioenergy* **2006**, *30*, 973–982. [CrossRef]
27. Knudsen, J.N.; Jensen, P.A.; Dam-Johansen, K. Transformation and Release to the Gas Phase of Cl, K, and S during Combustion of Annual Biomass. *Energy Fuels* **2004**, *18*, 1385–1399. [CrossRef]
28. Jensen, P.A.; Frandsen, F.J.; Sander, B. Experimental Investigation of the Transformation and Release to Gas Phase of Potassium and Chlorine during Straw Pyrolysis. *Energy Fuels* **2000**, *14*, 1280–1285. [CrossRef]

-
29. Strand, M. Particulate and CO Emissions from a Moving-Grate Boiler Fired with Sulfur-Doped Woody Fuel. *Energy Fuels* **2007**, *21*, 3653–3659. [[CrossRef](#)]
 30. Demirbas, A. Combustion characteristics of different biomass fuels. *Prog. Energy Combust. Sci.* **2004**, *30*, 219–230. [[CrossRef](#)]
 31. Spliethoff, H.; Hein, K.R.G. Effect of co-combustion of biomass on emissions in pulverized fuel furnaces. *Fuel Process. Technol.* **1998**, *54*, 189–205. [[CrossRef](#)]
 32. Hein, K.R.G.; Bemtgen, J.M. EU clean coal technology-co-combustion of coal and biomass. *Fuel Process. Technol.* **1998**, *54*, 159–169. [[CrossRef](#)]