

Article

Parametric Study on a Performance of a Small Counter-Rotating Wind Turbine

Michał Pacholczyk * and Dariusz Karkosiński 

Faculty of Electrical and Control Engineering, Gdańsk University of Technology, 80-233 Gdańsk, Poland; dariusz.karkosinski@pg.edu.pl

* Correspondence: michal.pacholczyk@pg.edu.pl; Tel.: +48-609-527-831

Received: 17 June 2020; Accepted: 27 July 2020; Published: 29 July 2020



Abstract: A small Counter-Rotating Wind Turbine (CRWT) has been proposed and its performance has been investigated numerically. Results of a parametric study have been presented in this paper. As parameters, the axial distance between rotors and a tip speed ratio of each rotor have been selected. Performance parameters have been compared with reference to a Single Rotor Wind Turbine (SRWT). Simulations were carried out with Computational Fluids Dynamics (CFD) solver and a Large Eddy Scale approach to model turbulences. An Actuator Line Model has been chosen to represent rotors in the computational domain. Summing up the results of simulation tests, it can be stated that when constructing a CRWT turbine, rotors should be placed at a distance of at least $0.5 D$ (where D is rotor outer diameter) or more. One can then expect a noticeable power increase compared to a single rotor turbine. Placing the second rotor closer than $0.5 D$ guarantees a significant increase in power, but in such configurations, dynamic interactions between the rotors are visible, resulting in fluctuations in torque and power. Dynamic interactions between rotor blades above $0.5 D$ are invisible.

Keywords: wind energy; counter-rotating wind turbine; computational fluid dynamics; actuator line model

1. Introduction

Wind energy is one of the most popular renewable energy sources; over the last decades, wind turbines have been extensively developed [1]. In the wind industry, single rotor 3-bladed Horizontal Axis Wind Turbines (HAWT) are, most often, in operation. This type of a wind turbine is also commonly studied. However, different types have been proposed, designed, and tested. Vertical Axis Wind Turbines (VAWT), due to their capability to operate independently from wind direction, have gained some industry interest. Another possible solution is the Magnus effect-based wind turbine, which uses rotating cylinders acting as blades. Power coefficient can be potentially increased with a Counter-Rotating Wind Turbine (CRWT). A Counter-Rotating Wind Turbine is a turbine with two counter-rotating rotors. However, this type of a wind turbine is not yet operating on a commercial scale and still needs development and studies.

Even with well-designed rotor blades in HAWT, due to the physical limitations, a large part of wind energy is not being captured. In the case of Single Rotor Wind Turbine (SRWT), energy extraction efficiency is limited to 59.3%, following classical Betz's theory [2]. In a real-world operation, the turbine's efficiency reaches 40–50% [3]. In CRWT, the second rotor is added and placed in the first rotor wake in order to extract the part of energy that is left in the wind. Newman showed in [4,5] that for an ideal turbine with two rotors, such as CRWT, energy extraction efficiency can be increased to 64%. In the case of an infinite number of rotors—that number goes to 66.7%. Schönball [6] is one of the first to describe a mechanism, which is composed of two counter-rotating rotors. In the generator, a rotor is driven by one wind turbine rotor, while commonly stationary stator is driven

by another one. Due to the counter rotation of two rotors, the relative speed between them may be doubled and, thus, the efficiency may be correspondingly increased when comparing with a conventional, single-rotor generator. McCombs [7] developed a wind turbine equipped with two sets of blades that are connected to the generator's rotor and stator directly.

When considering the design of a CRWT, there are few configurations possible. Placement of the rotors, the distance between each other, as well as its diameters can vary. When both rotors are placed at the upwind side of a tower (as for example in [8]), there is commonly small axial distance between them. Otherwise, bending torque caused by unevenly distributed hub weight would significantly stress tower construction. When rotors are placed at upwind and downwind sides and weight is distributed evenly, axial distance can be much larger. This, however, may result in a massive hub construction. In [9], authors proposed and investigated a turbine in such a configuration. CRWT can consist of rotors with different diameters, as one proposed for example in [10]. In that study, a smaller rotor is located at the downwind of the large one's side.

There are generally two approaches for designing an electrical generator for CRWT. Shafts from both rotors can be coupled by a differential mechanism. The output is then attached to a single conventional generator. Such a design was presented for example in [9,11,12]. Aiming to extend the use of counter-rotating rotors wind generators to medium- and large-scale applications, the latest paper [13] introduces and analyzes a new high-performance solution. The authors proposed a system that integrates two counter-rotating rotors, planetary speed increaser with one degree of freedom and four inputs and outputs, and an electric generator with counter-rotating windings. The proposed solution has compact design, increased power output (which makes it suitable for medium and large-scale wind turbines), and allows electric generator to operate in more efficient manner.

However, mechanical gearing introduces complexity and may increase the turbine's weight, maintenance, and spare parts costs for the system [14]. The second approach is to attach rotors shafts directly to separate, counter-rotating armatures. Due to higher relative rotational speed, the overall size of a generator and volume of magnetic materials used can be reduced. Studies on a separated generator have been conducted (e.g., [15,16]), as well as on a complete CRWT system with such an electrical machine (see [17,18]).

The CRWT concept is being studied both experimentally and numerically. Experimental investigations include tests in wind tunnels, see e.g., [17] or [19]. There were several field test reports as well. Study results of a 6 kW CRWT carried out over a period of 4 months have been presented in [20]. Operational field tests of a small CRWT have been described in [8]. Numerical investigations are mainly performed with use of the Computational Fluids Dynamics (CFD). Some simpler methods have been developed and used with examples presented in [21,22]. Those methods, however, do not take into account all the complexity of a flow around CRWT wind turbine, especially the influence of turbulent structures created behind the first rotor. Therefore, despite a costly computation, CFD is often chosen before CRWT experimental investigation.

Different techniques, accurately differentiated in [23], are considered when simulating wind turbines with CFD. Rotor's geometry can be recreated on a numerical grid. This approach, however, requires an extremely dense mesh in boundary layers. Moreover, compressibility effects can occur at the tip of the blade. This would result in additional terms in solving equations (nevertheless some authors used direct rotor representation for CRWT simulation, see for example [24]). Therefore, several simplified methods have been proposed containing Actuator Disk Model (ADM) [25] or Actuator Surface Model (ASM) [26]. In the present study, Actuator Line Model (ALM) introduced in [27] has been used. This technique allows to represent a single blade of a wind turbine and to simulate its influence at the flow at a relatively low computational cost.

A number of studies, with one of such methods, have been performed investigating CRWT performance. Results of these studies verified its viability (see for example [14–16] or [17]). Moreover, trials with CRWT have been previously conducted, with such extensive ones as CRWT wind farm simulation [18]. To predict the annual energy gain Shen et al. in [19] used ALM for different turbine's

configurations. In that study, rotors were accurately counter-rotating for all studied configurations. A more extensive parametric study has been presented in [20]. However, in that study, authors utilized Actuator Disc Model. That approach does not take into account an influence of a single blade. Thus, it does not produce blade tip vortices. Additionally, authors performed simulations in steady state and used averaged turbulence model. Averaging leads to neglecting of rotors dynamic interactions. Turbine diameter was also much larger, resulting in completely different operational conditions.

The goal of this study is to find the optimal configuration and operational point for proposed CRWT. For that reason, a parametric CFD study has been performed with ALM method employed to model CRWT. Tip speed ratio (TSR) of each rotor and distance between them have been chosen as the parameters. The following chapters of this article present the basics of the numerical calculation method, the design of rotor for simulations, as well as the model simulation setup and its verification. The main substantive results of the parametric study and their analysis are contained in Section 4.

2. Numerical Method

Airflow around the wind turbine can be described by the Navier–Stokes equations. Solution for these highly nonlinear, differential equations can be approximated numerically with Computational Fluid Dynamics (CFD) techniques. In general, flow can be described as follows:

$$\nabla \cdot \mathbf{u} = 0, \quad (1)$$

$$\frac{\partial \mathbf{u}}{\partial t} + (\mathbf{u} \cdot \nabla) \mathbf{u} = -\frac{1}{\rho} \nabla p + \nu \nabla^2 \mathbf{u} + \frac{1}{\rho} \mathbf{G} \quad (2)$$

where \mathbf{u} is the fluid velocity vector, p stands for fluid pressure, ρ represents fluid density, ν is the kinematic viscosity. ∇^2 is described as Laplacian operator and \mathbf{G} is external forces vector. When flow is turbulent, it is extremely costly to find a direct numerical solution (DNS) for the studied case. Therefore, several simplifying methods for a turbulence modeling have been proposed. For steady state cases, turbulence can be averaged over time and space. This approach is known as Reynolds-averaged Navier–Stokes (RANS) and is utilized with appropriate turbulence models applied. However, in present research dynamic interference between the turbine's blades is to be studied. Therefore, Large Eddy Scale (LES) has been incorporated for a turbulence modeling. In this approach, smaller turbulent structures are modeled using sub-grid scale models. Only those that were not filtered out are solved numerically. This kind of fluid flow equations filtering converts Equations (1) and (2) to form:

$$\nabla \cdot \tilde{\mathbf{u}} = 0, \quad (3)$$

$$\frac{\partial \tilde{\mathbf{u}}}{\partial t} + (\tilde{\mathbf{u}} \cdot \nabla) \tilde{\mathbf{u}} = -\frac{1}{\rho} \nabla \tilde{p} + \nu \nabla^2 \tilde{\mathbf{u}} - \nabla \cdot \tau_{SGS} + \frac{1}{\rho} \mathbf{G} \quad (4)$$

$$\tau_{SGS} = -\nu_{SGS} (\nabla \tilde{\mathbf{u}} + (\nabla \tilde{\mathbf{u}})^T) \quad (5)$$

where ν_{SGS} is the sub-grid scale viscosity. In the present study, it is modelled with the standard Smagorinsky model [28]. $\tilde{\mathbf{u}}$ stands for filtered velocity vector, \tilde{p} represents filtered pressure.

Wind turbine representation has to be put into the computational domain in order to investigate performance and to analyze the turbine's wake. It can be done in several manners. One can transpose blades geometry onto the numerical grid. However, to simulate flow in the boundary layers, the mesh close to the blade's surface has to be extremely dense, thus increasing computational expense. Moreover, since modern blades have complex shape with profile that changes as a function of span, keeping grid structured can be difficult as well. Actuator models introduced into the domain are much simpler alternatives. Such models predict the rotor thrust and torque without fully resolving the rotor and blade geometry. In this study, the Actuator Line Model (ALM) has been used. Along with the capability to represent separated blades and thus to investigate dynamic interactions between

rotors' blades, its computational cost is also relatively low. Moreover, this approach does not require any modification of the computational grid but a fully structured one can be utilized which is easier to create and refine.

In the Actuator Line Model, each rotor blade is represented by a set of discrete segments distributed evenly along the blade's span. Body force is applied to a fluid flow at the center of each segment. Drag D and lift L can be calculated based on the segment's location and width w , as well as airfoil chord c and twist, local wind speed U_{rel} and tabulated lift C_L and drag C_D coefficients values at the determined angle of attack α . Drag and lift forces are given by the following equations:

$$L = \frac{1}{2} C_L(\alpha) \rho U_{rel}^2 cw, \quad (6)$$

$$D = \frac{1}{2} C_D(\alpha) \rho U_{rel}^2 cw, \quad (7)$$

Applied body force is equal and opposite in direction to the vector sum of lift and drag forces. The Gaussian function is used to project it in on surrounding finite elements:

$$f_{proj} = \frac{F}{\varepsilon^3 \pi^{3/2}} \exp \left[-(r/\varepsilon)^2 \right] \quad (8)$$

where F is calculated force, ε stands for Gaussian projection width and r is distance from the center of an actuator segment.

For the accurate power prediction, proper selection of the ALM model's parameters is crucial. The most important is the projection width ε , which determines force distribution in an actuator point proximity. If a too high value is selected, the force is projected far beyond the actual blade swept area. On the other hand, a too low value results in discontinuous force distribution. Often, a set of trials is required to determine the proper value, but the general rule is to use $\varepsilon > 2\Delta x$, where Δx is finite element edge size. Lower values may introduce numerical instabilities into the solver. Another important factor is the simulation time step, which should be small enough to not let virtual blade move more than one finite element at a time. It ensures smooth application of a body force as well. Time step is correlated with a grid resolution. The denser mesh the better but limit has to be set to ensure reasonable calculation time. A sufficient number of actuation points should be used to ensure the continuous distribution of force. It is good practice to have actuator points in twice the number of finite elements along the blade span. Best practices and guidelines for simulation with ALM have been presented, e.g., in [29].

3. Simulation Setup

3.1. Rotor Design

The studied CRWT turbine consists of two, identical rotors. The used rotor is a newly designed, 3-bladed rotor with an outer diameter of $D = 1.4$ m. Root diameter is equal to 0.25 m. Airfoil NACA 4418 has been selected and distributed along the blade's span. Rotor design has been optimized for operation with the TSR = 5. Blade Element Momentum Theory (BEMT) methodology has been selected for the designing purpose. It is a widely used, iterative method for fast and reliable single rotor wind turbine design [3]. However, it is not applicable for multi-rotor turbine since it assumes a uniform airstream at a rotor inlet. In the reality, the wake behind a rotor is highly turbulent; thus, the second and later rotors operate in highly unstable conditions, and much more complex methodologies have to be incorporated.

The left-hand side of Figure 1 presents the airfoil twist and chord distributions along the blade's span while the right side presents the selected airfoil NACA 4418. Calculated performance characteristics (power, torque and thrust coefficients) are plotted in the following sections and compared with numerical calculation results. Power coefficient $C_p = 0.4729$ at designed operating point (TSR = 5)

was obtained with the BEMT methodology. The detailed blade design process has been described in [30].

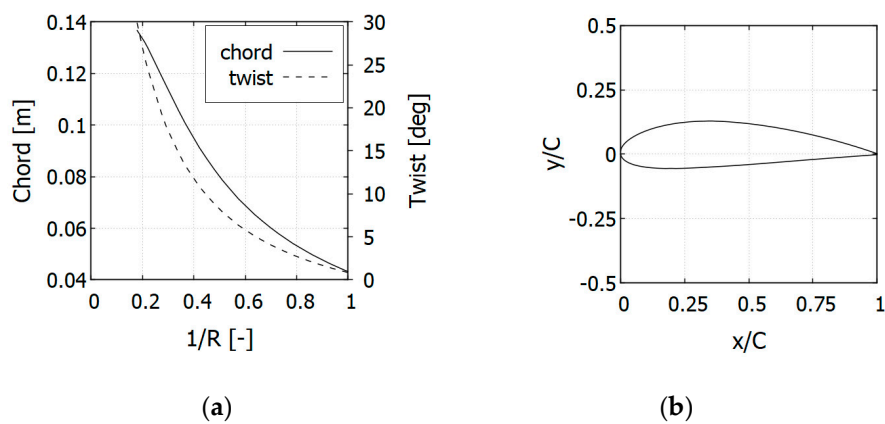


Figure 1. Twist and chord distributions (a); selected airfoil NACA 4418 (b).

3.2. Computational Domain and Simulation Setup

The computational domain has a cubic shape with dimensions of $10 D \times 10 D \times 10 D$, where $D = 1.4$ m is the rotor diameter. Domain with applied boundary conditions has been schematically presented in Figure 2. It consists of several cylindrical grid refinement regions. They were introduced to provide a sufficient mesh density around the wind turbine model while keeping total element count relatively low (9,572,739 elements in total). At each domain's border, there is 50 elements with edge size of 0.28 m. There are four refinement regions. In the turbine, proximity edge size is equal to 0.0175 m. In all studied cases, the uniform wind velocity at the inlet is equal to 8 m/s.

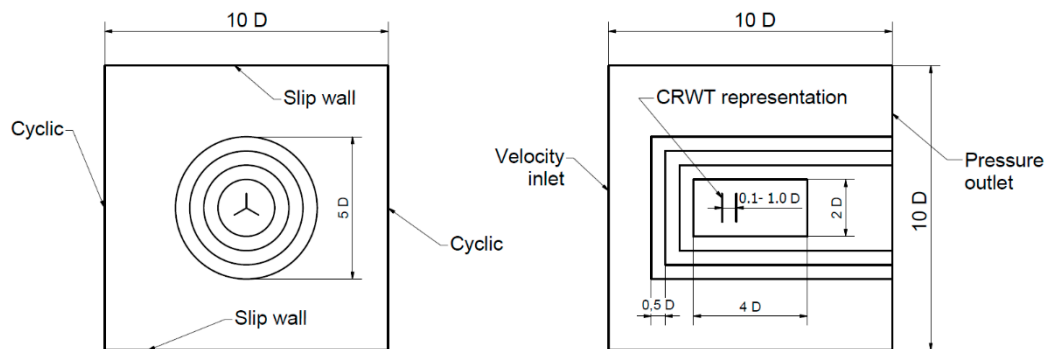


Figure 2. Computational domain with applied boundary conditions.

The front rotor of a CRWT model is placed about $4 D$ from the inlet. Its position is kept constant while the second rotor is transformed from $0.1 D$ to $1 D$ behind the first one. The finest mesh region, where wind turbine representation is located, has a cylindrical shape with a height of $4 D$ and $2 D$ diameter. Based on trial simulations and best practices developed by other authors (e.g., in [29]), the following ALM model parameters have been set:

- Gaussian projection width ϵ was set to 0.035 m, which is equal to $2\Delta x$;
- 40 finite elements and 80 actuator points were introduced along the blade span;
- simulation time was set to 5 s with the time step equal to 0.0002 s.

Such parameters resulted in 25,000 time steps for each simulation. During 5 s, the rotor operating with $TSR = 5$ performs over 45 revolutions. In order to calculate the overall performance of a wind turbine result were averaged from 3 s to 5 s. The period of 3 s was found to be enough for power and torque output to stabilize and be kept steady. Stability of power was also used as convergence criteria.

To solve the unsteady turbulent flow described by Navier-Stokes equations, Large Eddy Scale method with standard Smagorinsky model has been used. Equations were solved with the incorporated PISO algorithm. SOWFA's implementation of ALM has been used. That tool, based on OpenFOAM set of CFD solvers, was created by Matt Churchfield and Sang Lee from NREL [31]. Calculations were carried out at the Academic Computer Centre in Gdańsk.

3.3. Model Setup Verification

Before the CRWT parametric study, a numerical setup described in the previous section has been verified with SRWT turbine simulation. Result for a single rotor obtained with classical BEMT theory was then compared with ALM calculation results. Single rotor model was placed in the location of a CRWT's front rotor. Second rotor representation has been removed from the domain.

Dimensionless TSR is a common term to identify the operation state of a wind turbine. It relates to wind velocity and the rotational speed of a rotor, therefore turbine characteristic is not directly dependent on neither of them. Several operational points for different TSR were simulated in order to verify setup reliability across the entire turbine's working regime. Inlet wind speed was kept constants, while rotational speed was changing and thus the TSR was modified. CFD simulations were carried out for the TSR ranging from 2 to 9, with a step equal to 1. In Figure 3, power coefficient C_p , torque coefficient C_q , and thrust coefficient C_t characteristics derived from BEMT and ALM calculation are compared.

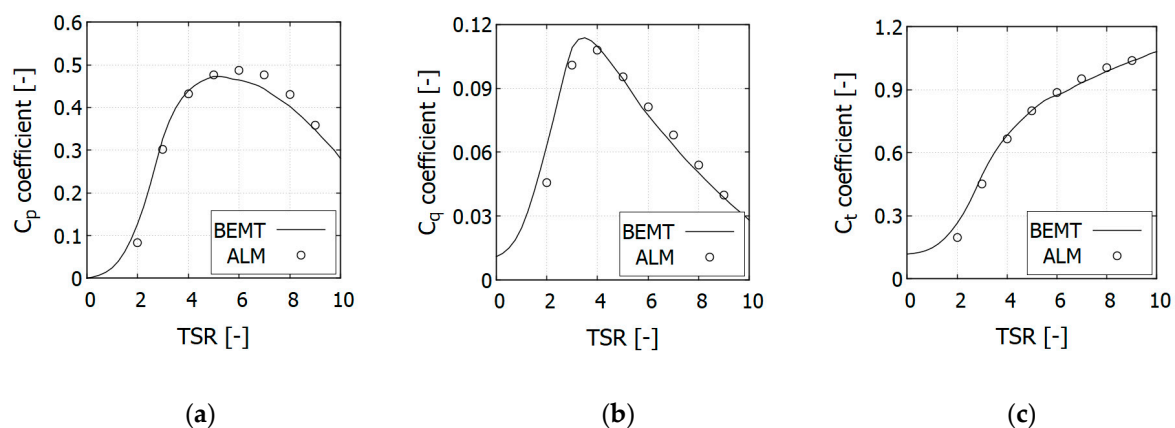


Figure 3. C_p (a), C_q (b) and C_t (c) coefficients obtained with Blade Element Momentum Theory (BEMT) and Actuator Line Model (ALM).

C_q and C_t coefficients values for both BEMT and ALM calculations are in a very good agreement for most of the studied TSR range. When comparing C_p coefficient calculations, slight overestimation is seen for the ALM results starting at TSR = 5 up to TSR = 9. Moreover, the operational optimum has been found for TSR = 6 even though the blade was designed and optimized for TSR = 5. However, differences between both methods results are small enough to be accepted. For designed TSR = 5, C_p coefficient for BEMT and ALM are equal 0.4729 and 0.4767, respectively, which is less than 1% difference. Figure 4 presents the mean velocity and vorticity contours for the SRWT operating with TSR = 5. It can be noticed that the wake remains stable several diameters behind a rotor. With Actuator Line Model method used, the vorticities induced by a single blade's tip are clearly visible at the vorticity contour.

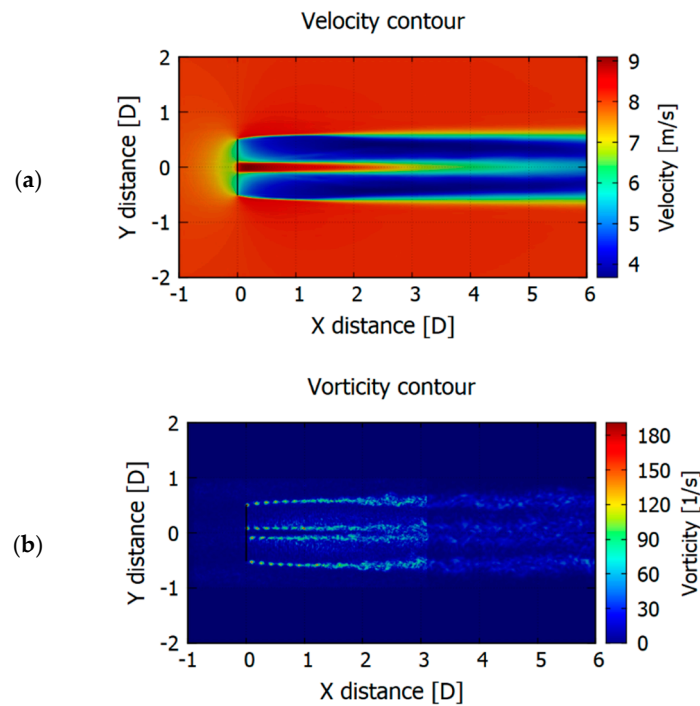


Figure 4. Mean velocity (a) and vortices (b) contours for Single Rotor Wind Turbine (SRWT) operating with TSR = 5.

3.4. Grid Independence Test

Setup described above has been tested for a grid independency. Four different grid resolutions have been tested with finest one with 26,279,694 elements. All the simulations were carried out for turbine rotating with TSR = 5. Test results have been plotted on the Figure 5 and collected in Table 1. In Figure 5 one can see change of C_p and C_t coefficients along with grid resolution modification. In Table 1, additional column with % error from the value calculated with BEMT is present.

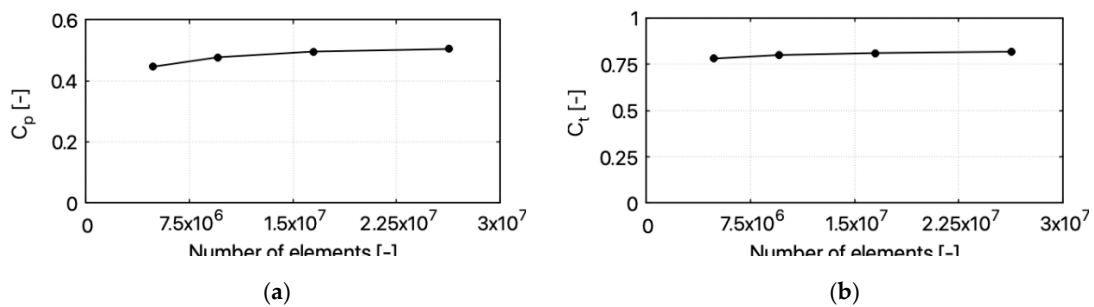


Figure 5. C_p (a), C_t (b) and C_t (c) change with increase of grid’s resolution.

Table 1. The mesh independence test.

Cell Number	C_p	C_p Error [%]	C_t	C_t Error [%]
4,910,632	0.4457	−5.7467	0.7809	−2.7456
9,572,739	0.4767	0.8063	0.8001	−0.3549
16,519,308	0.4953	4.7433	0.8106	0.9545
26,279,694	0.5038	6.5305	0.8184	1.9249

Both coefficients’ values tend to stabilize with an increase of elements number. However, it can be observed that for higher grid resolutions C_p and C_t coefficients are significantly overestimated. For the

present study grid with 9,572,739 elements has been selected, although simulations results can be grid dependent as seen from Table 1. Nevertheless, due to large number of simulations to be carried out and its computational cost as well as better estimation of reference turbine's C_p selected grid resolution is considered suitable.

4. CRWT Parametric Study

With a numerical setup verified, a parametric study for CRWT has been performed. The amount of energy extracted from a stream of air is expected to significantly increase when a second rotor is added. The second rotor model has been placed in a computational domain and different configurations and operational points have been studied. The chosen parameters were the distance between rotors and the TSR of each rotor (for both rotors TSR was calculated in relation to wind velocity at domain input). Rotors were separated by distances 0.1 D, 0.25 D, 0.5 D, 0.75 D, and 1 D. In each configuration, TSR of front and rear rotor were changing in a range from 2 to 8 with step equal to 1; thus, 49 simulations were performed for every distance giving 245 simulations in total. Average calculations time of a single simulation was about 7 h. Even though simulations were paralleled on 768 cores each, it took over 1700 computational hour in total to conduct this parametric study. Cluster where simulation have been carried out is based on Intel® Xeon® Processor E5 v3 @ 2, 3 GHz. In the previous papers [32,33], authors presented partial simulations results obtained with proposed approach while in the present one full parametric study results are described.

Results of simulations were collected and presented in the form of maps. Calculated power, torque, and thrust coefficients were plotted in a function of front and rear rotors' TSR. Additionally, the differences between those values for both rotors were plotted as well. Value maps are presented in Figures 6–8. Results analysis helped to find the best configuration and operational point for CRWT. Thanks to the utilization of a transient solver, interactions between rotors could be observed and analyzed. Obtained fields contours were discussed as well. In the following sections, the term “configuration” relates to the distance between rotors, while the term “operational point” relates to the values of TSR for the front (TSR_1) and rear (TSR_2) rotor in a certain configuration.

4.1. CRWT Performance

The optimal values of power, torque, and thrust coefficients for each studied configuration are presented in Figures 9–11. Rotors' TSR at these operational points are marked as well. The following are the main results analyses findings:

1. for all the studied distances separating CRWT's rotors, there is an optimal operational point where power coefficient C_p is higher than for SRWT operating with designed $TSR = 5$;
2. optimal power coefficient tends to grow with a distance between rotors;
3. highest power coefficient was observed in the configuration where rotors were separated by distance 1 D, the front rotor was operating with $TSR = 5$ and rear one with $TSR = 3$. In this configuration increase in C_p value, in comparison to SRWT, is significant and equals to 12.02%. The lowest increase in C_p was obtained in configuration 0.1 D (8.87%). TSR in optimal operational point for this configuration was equal to 3 and 4 for the front and rear rotor, respectively;
4. for all the studied configuration points, only for distance 0.1 D is the optimal operational obtained when TSR of the rear rotor is higher than for the front one. In other configurations, C_p optimum occurs when the front rotor rotates faster. In the best configuration (distance 1 D, $TSR_1 = 5$, $TSR_2 = 3$) the rear rotor rotates 40% slower. However, due to the counter-rotation, the relative rotational speed at the generator shaft increases by 60% in comparison to SRTW;
5. most of the power is generated by the front rotor as it can be clearly observed in maps presenting differences in rotor performance;
6. for all the configurations, the 0.1 D increase in torque coefficient C_q is similar and observed when rotors are exactly counter-rotating with $TSR_1 = TSR_2 = 3$. Torque at the generator shaft is higher

by about 40% than the torque generated by SRWT in optimal point (for torque coefficient optimal TSR is always lower than for power coefficient for which the turbine is designed. As seen in Figure 3, the highest SRWT torque is obtained with $TSR \sim 3.5$);

- as expected, thrust is much higher than in the case of SRWT. Maximum value of thrust coefficient for each configuration is similar. It is observed when both rotors operate close to $TSR = 8$. A substantial increase in thrust results in a much more expanded wake, as seen in Figure 13.

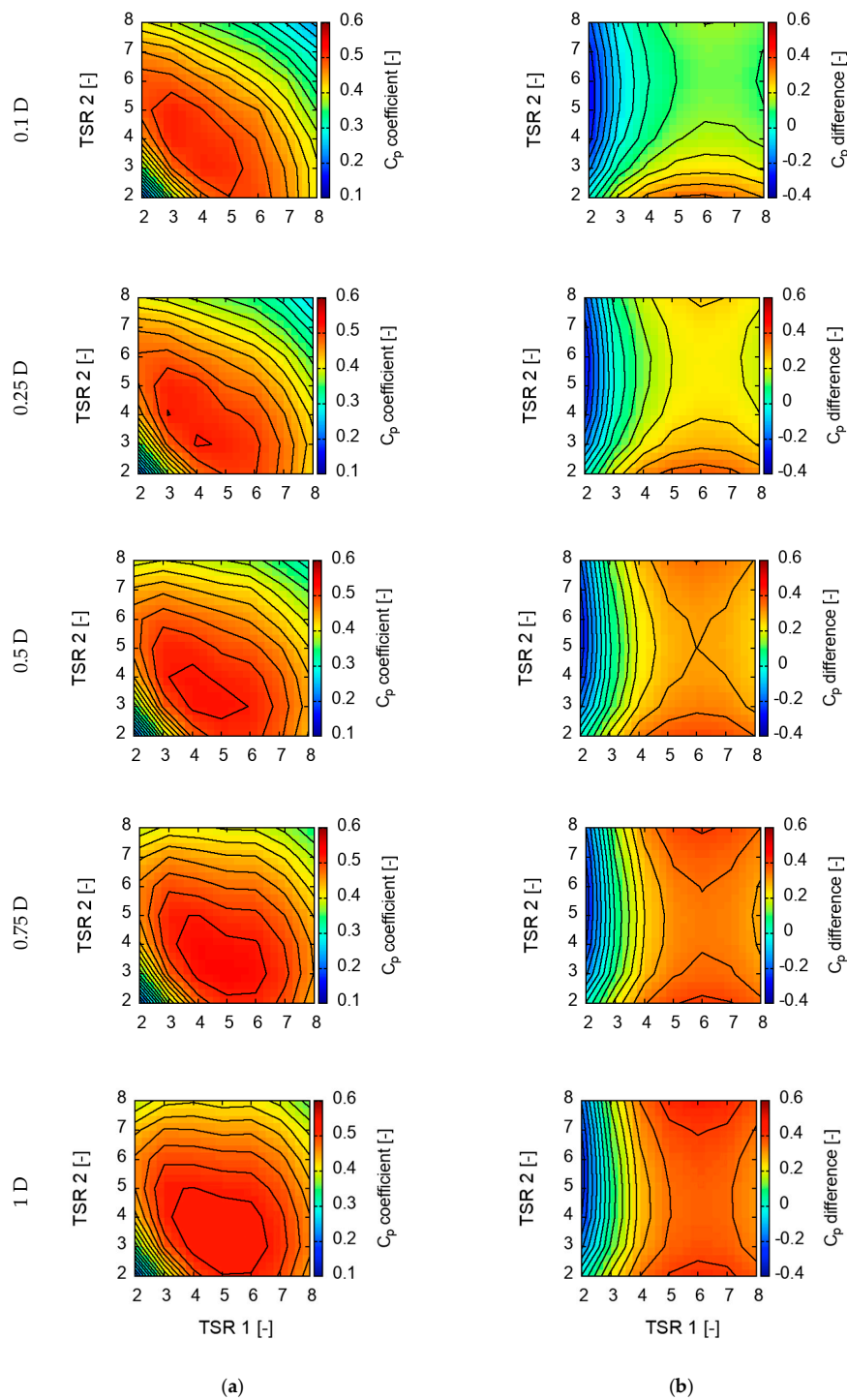


Figure 6. Maps of total power coefficient C_p (a) and the difference in C_p between rotors (b).

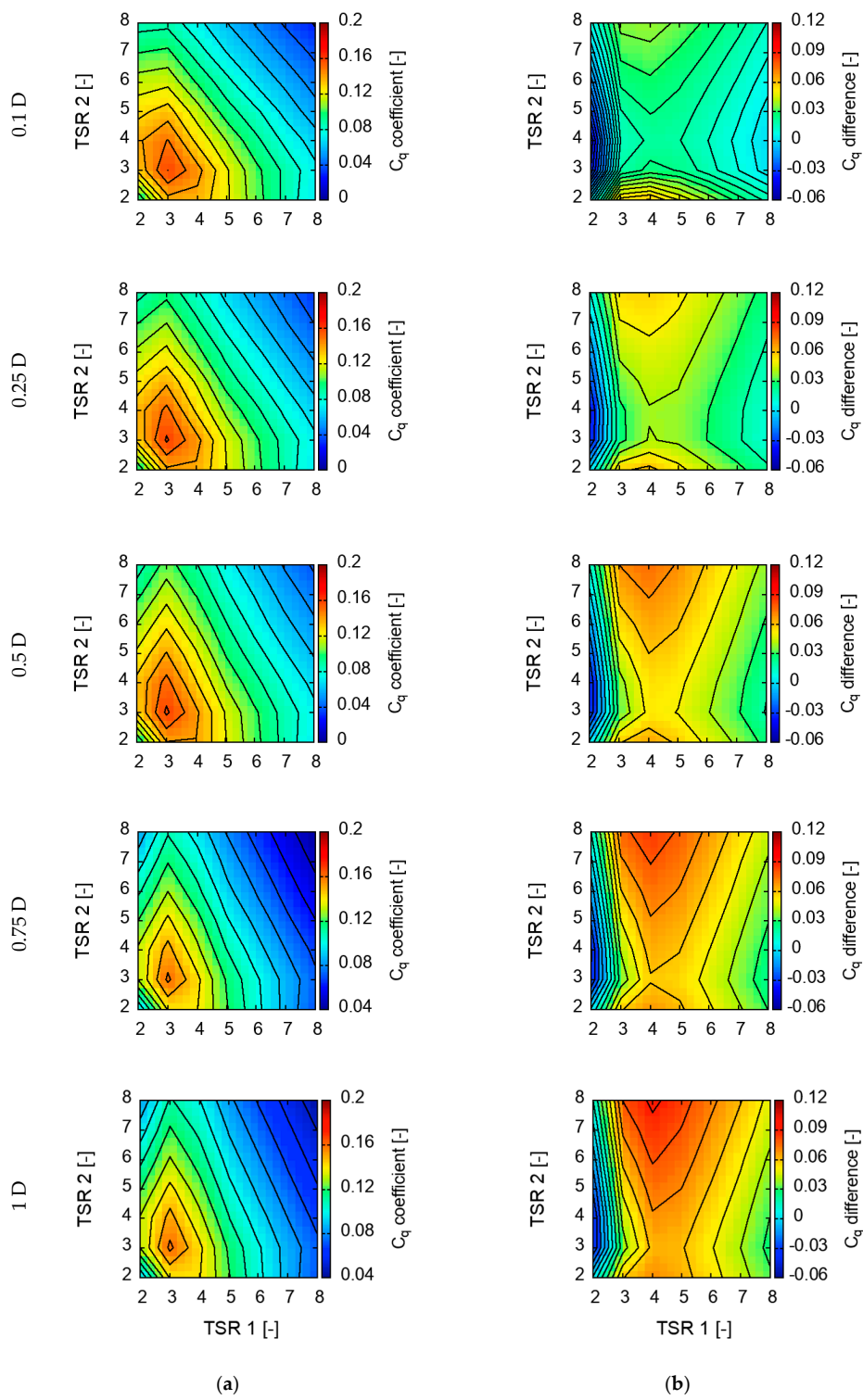


Figure 7. Maps of total torque coefficient C_q (a) and the difference in C_q between rotors (b).

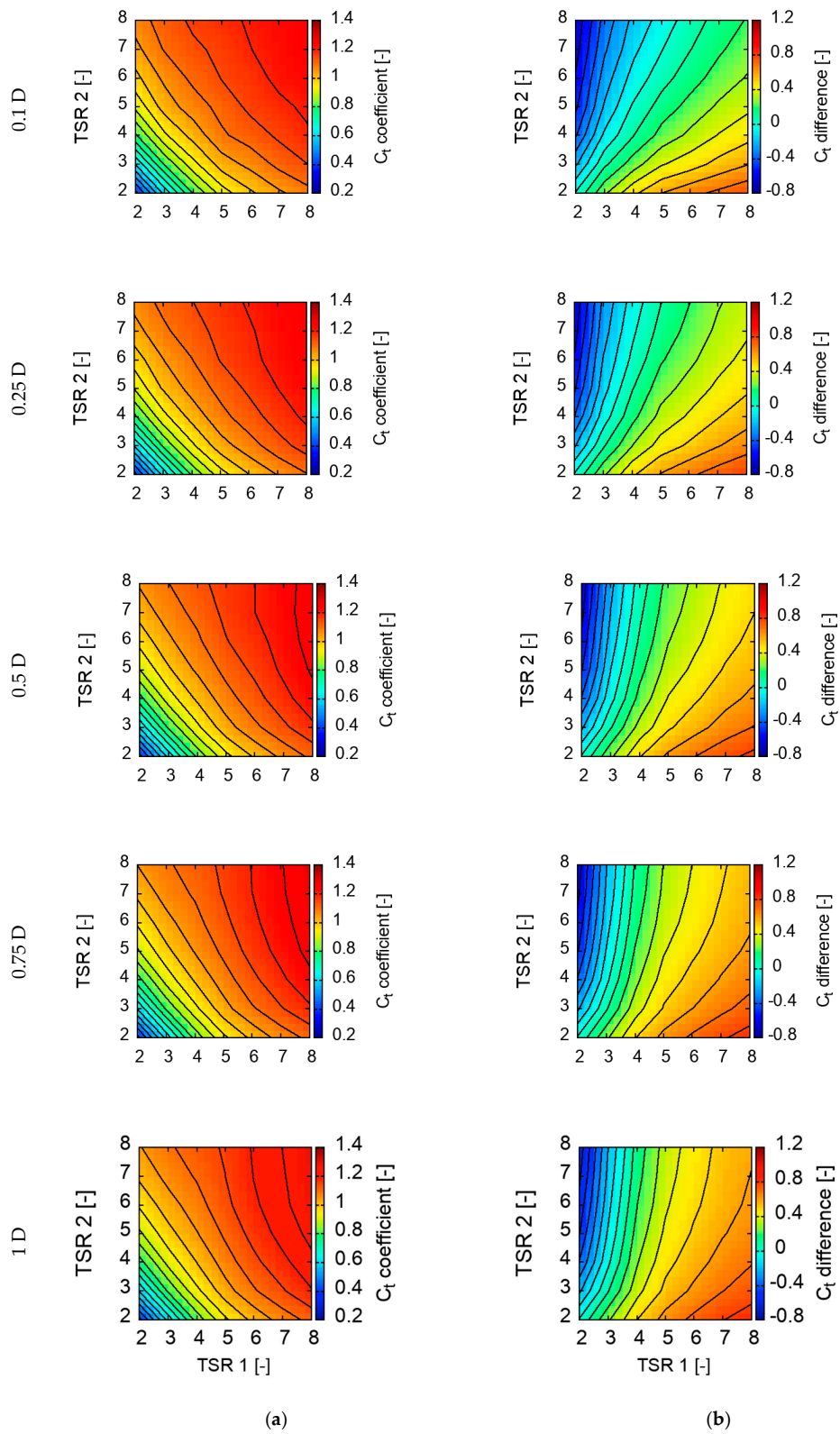


Figure 8. Maps of total thrust coefficient C_t (a) and the difference in C_t between rotors (b).

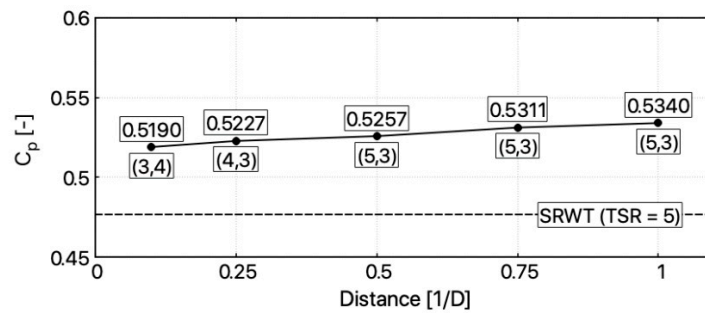


Figure 9. Power coefficient C_p for optimal operational point for different configurations.

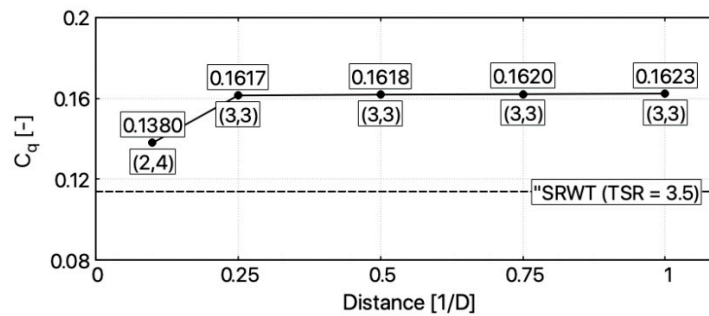


Figure 10. Torque coefficient C_q for optimal operational point for different configurations.

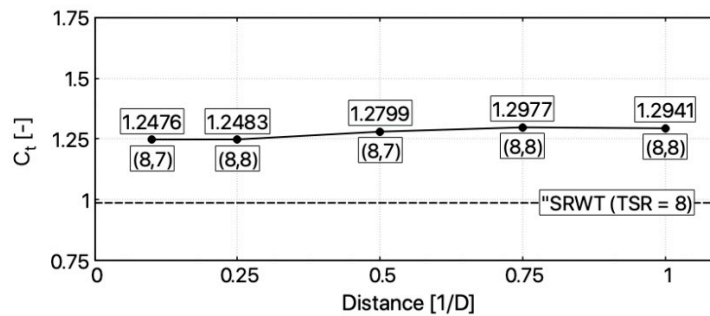


Figure 11. Thrust coefficient C_t for optimal operational point for different configurations.

4.2. Rotors Interaction and Wake Analysis

The selected CFD solver is a transient one therefore it was possible to analyze the dynamic interactions between the front and rear rotor. Moreover, with the ALM approach applied for rotor modeling, it is also possible to observe an influence of a single rotor's blade on a fluid flow. SOWFA software comes with build functions for calculating torque and power at the turbine's shaft. It is done by integrating over forces generated at each actuator point.

In Figure 12, the generated total torque (left-hand side) and power (right-hand side) have been plotted. For each configuration, optimal operational points have been presented in terms of C_p . The plot from a simulation last quarter of a second is shown (from 4.75 s to 5 s). State of the model in that period is considered to be very stable and steady. The selected period represents slightly more than 2 revolutions for rotor operating with $TSR = 5$.

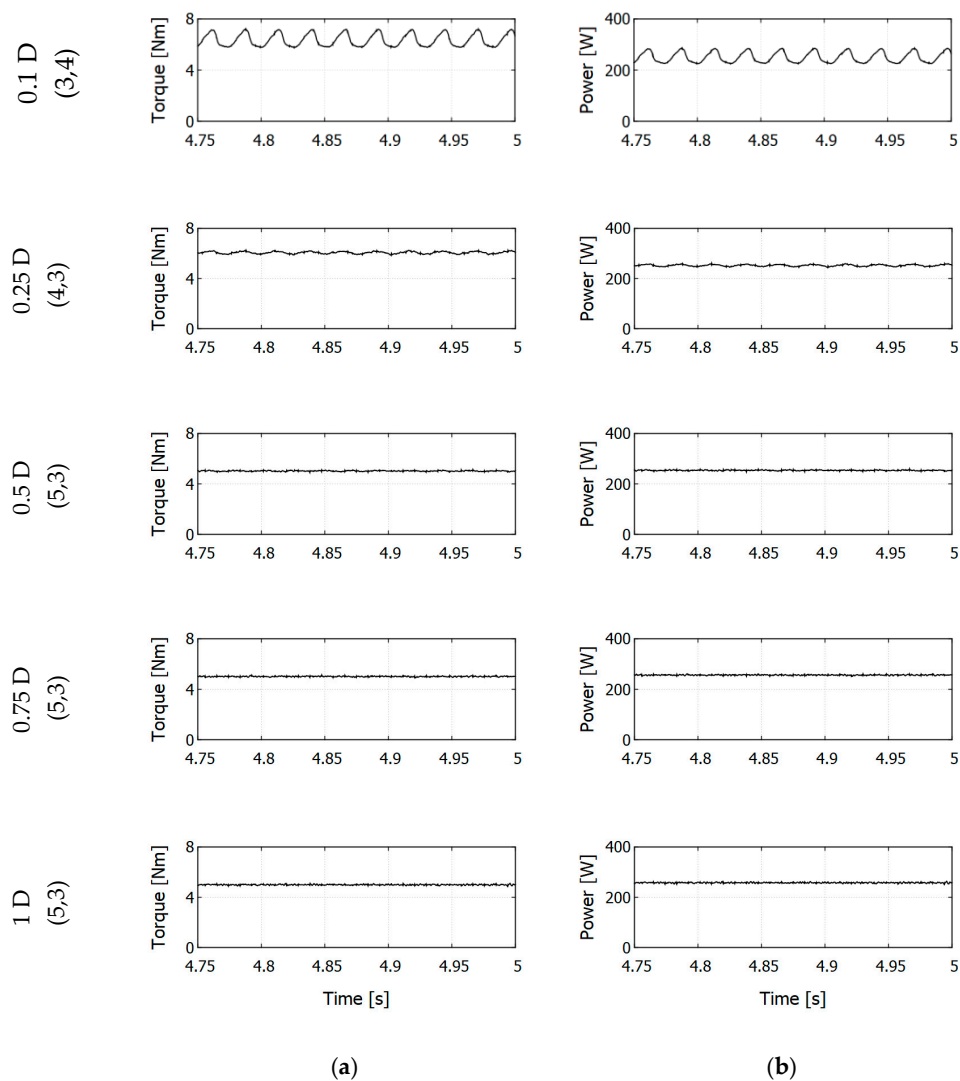


Figure 12. Plots of generated torque (a) and power (b) for different Counter-Rotating Wind Turbine (CRWT) configurations.

High fluctuations in a torque are clearly visible for configuration 0.1 D. Maximums correspond to blades from separate rotors passing each other. Frequency of the fluctuations relates to an operational point, which is to the rotational speed of the rotors. Variations can be also observed for configuration 0.25 D; however, their amplitude is much lower. With the separation between rotors equal and higher than 0.5 D, fluctuations become unnoticeable. In terms of standard deviation, fluctuations in torque and power for cases 0.1 D and 0.25 D have a magnitude of $\sim 8\%$ and $\sim 1.5\%$ of average values, respectively. For configurations 0.5 D, 0.75 D, and 1 D deviation does not exceed 1% of the average value. Therefore, it can be stated that interactions in these configurations are negligible.

In Figure 13, contours for mean wind speed (averaged from 3 s to 5 s) and vorticity are presented. For comparison, the same operational point for each configuration is plotted. Rotors are exactly counter-rotating with $TSR = 5$. High thrust, and thus largely expanded wake can be clearly noticed. A large reduction in a wind velocity is observed right behind the rear rotor. The aerodynamic wake seems to be similar for all the cases, with a tendency to be more coherent with rotors separation rising. Wake loses its stability around 2 D behind the second rotor. Unphysical transition in the vorticity at distance 3 D behind first rotor is visible. It is related to an end of the finest grid region. Even if it can be considered as a near wake region, it should not affect a power performance or its effect would be negligible.

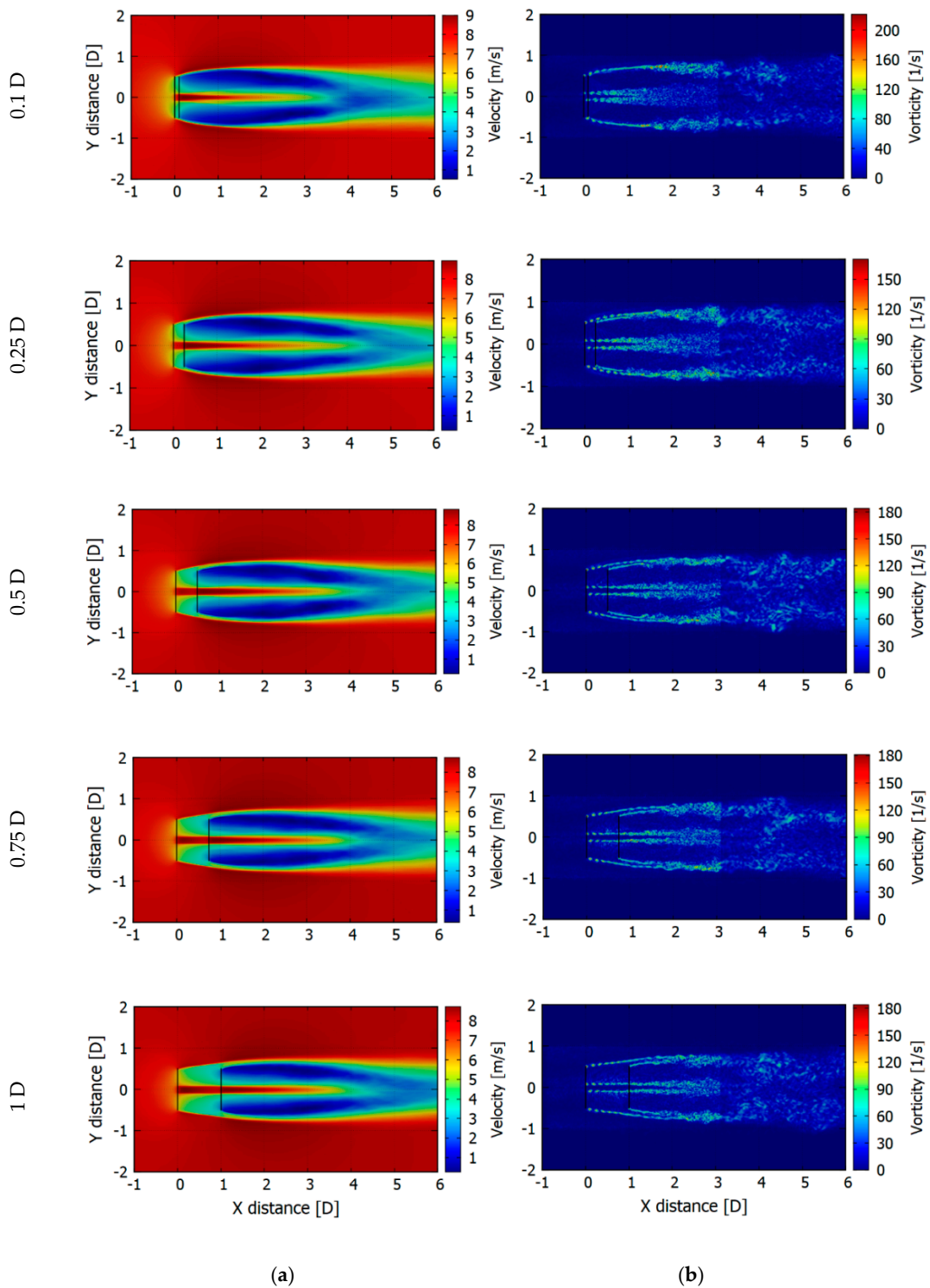


Figure 13. Mean velocity (a) and vortices (b) contours for CRWT operating with $TSR_1 = TSR_2 = 5$.

However, a more comprehensive study is required in order to precisely characterize CRWT wake. A denser mesh should be applied in all the region of near wake and the domain ought to be extended for the far wake region as well. In this study, due to the extensive parameters range, the wake region was outside of the research scope. In the present setup, no hub, nor tower representations, were included into a computational domain. Tower would cause an additional fluctuation in power generation, while hub could affect velocity field behind a first rotor.

5. Conclusions

In this paper, the parametrical CFD study on a small counter-rotating wind turbine (CRWT) performance has been carried out. Influence of the axial distance and tip speed ratio of each rotor have been chosen as the studied parameters. In all the configurations, rotors counter-rotated with variable rotational speed ranging from 2 to 8. Investigated axial distance range stretches from 0.1 D to 1 D. Calculated CRWT C_p coefficient in optimal points was higher for all studied axial distances in comparison to reference SRWT. Power gain extended from 8.87% to 12.02%. The optimal case was 1 D. Power gain has a tendency to grow together with the increase of an axial distance. As expected, values for thrust coefficient were much higher than for the SRWT. Value of C_t was ranging from 1.2476 to 1.2941. In all the cases, wake behind a second rotor was similar. In comparison to a single rotor case, it has expanded much more and has lost its stability faster. When dynamic interaction between rotors are taken into considering, large fluctuations in torque and power are observed for distance 0.1 D. The magnitude of fluctuations reaches 8% of the average value in the case of a torque. Together with an increase of axial distance, fluctuations tend to decrease. It can be stated that they disappear starting from distance 0.5 D. The fluctuation in torque and power plots were induced by rotors' blades passing each other.

Based on the conducted study's results, the following conclusions can be established. For CRWT configurations, when rotors are separated by the distance from 0.1 D to 0.5 D, significant increase in power is observed. However, for cases 0.1 D and 0.25 D, large dynamic interactions in torque and power values would lead to extreme fatigue loads on the turbine's construction. Furthermore, it would cause an uneven power generation. Obtained results showed that the distance between CRWT's rotors ought to be contained in the range between 0.5 D to 1 D. Noticeable power gain is observed for configurations in that range. It reaches a maximum of 12% for 1 D case. Additionally, no significant dynamic interactions are noticed. Therefore, it can be stated that a CRWT with both rotors at the same side of the tower are not preferable, because distance in a range 0.5 D–1 D is not appropriate for this type of a construction. CRWT with rotors at upwind and downwind side seems to be more rational. However, the wind turbine's hub would become oversized if rotor distance would be more than 1 D, even though power gain has a tendency to grow further beyond that distance. As study results showed, when one considers CRWT prototyping, it should be designed in following fashion: turbine rotors should be located at different sides of the tower and distance between them should be contained in the range 0.5 D–1 D.

Used in this study, Actuator Line Model (ALM) turns out to be computationally cost-effective. Moreover, it has the ability to reveal dynamic interactions between rotors. When considering future study areas, these should include a detailed investigation of near and far CRWT wakes. Tower and hub influence could also be investigated. The simulation model seems to have fulfilled its role and further physical research is needed. Performed simulation tests require confirmation through laboratory tests in an aerodynamic chamber. Therefore, the low power physical CRWT model has been prepared with the ability not only to change the distance between the rotors, but also to test the turbine performance at different blade numbers.

Summing up the results of the simulation tests, it can be stated that when constructing a CRWT turbine, rotors should be placed at a distance of at least 0.5 D or more. The power increase of around 10% compared to a single rotor turbine can then be expected, together with increased shaft relative rotational speed. Placing a second rotor closer than 0.5 D guarantees a significant increase in power (approximately 8–10%); however, in such configurations, dynamic interactions between the rotors can occur. Interactions result in fluctuations in torque and power, which will lead to vibrations of the turbine structure and fatigue loads. Uneven power production in the turbine generator can be observed as well. Dynamic interactions between rotor blades above distance of 0.5 D are negligible. Additional economic analysis is necessary to investigate that obtained increase in power can justify a cost of adding a second rotor.

Author Contributions: Conceptualization and literature review M.P., D.K.; methodology and investigation, M.P.; writing, review and editing, M.P., D.K.; All authors have read and agreed to the published version of the manuscript.

Funding: This research was funded by the Pomeranian Research and Development Projects of WFOŚiGW (ang. Voivodeship Fund for Environmental Protection and Water Management in Gdańsk, Poland), Grant acronym CRWT (counter-rotating wind turbine with dual rotor generator) RX-15/4/2017.

Conflicts of Interest: The authors declare no conflict of interest. The funder has no role in the design of the study; in the collection, analyses, or interpretation of data; in the writing of the manuscript, or in the decision to publish the result.

References

1. Tang, X.; Huang, X.; Peng, R.; Liu, X. A Direct Approach of Design Optimization for Small Horizontal Axis Wind Turbine Blades. *Procedia CIRP* **2015**, *36*, 12–16. [[CrossRef](#)]
2. Betz, A. *Introduction to the Theory of Flow Machines*; Elsevier: Amsterdam, The Netherlands, 1966. [[CrossRef](#)]
3. Schubel, P.J.; Crossley, R. Wind Turbine Blade Design. *Energies* **2012**, *5*, 3425–3449. [[CrossRef](#)]
4. Newman, B. Actuator-disc theory for vertical-axis wind turbines. *J. Wind. Eng. Ind. Aerodyn.* **1983**, *15*, 347–355. [[CrossRef](#)]
5. Newman, B. Multiple actuator-disc theory for wind turbines. *J. Wind. Eng. Ind. Aerodyn.* **1986**, *24*, 215–225. [[CrossRef](#)]
6. Schönball, W. Electrical Generator Arrangement. USA Patent 3,974,396, 10 August 1976.
7. McCombs, J.C. Machine for Converting Wind Energy to Electrical Energy. USA Patent 5,506,453, 9 April 1996.
8. Romański, L.; Bieniek, J.; Komarnicki, P.; Dębowski, M.; Detyna, J. Operational tests of a dual-rotor mini wind turbine. *Ekspolatacja i Niezawodn.—Maint. Reliab.* **2016**, *18*, 201–209. [[CrossRef](#)]
9. Habash, R.W.Y.; Blouin, C.; Guillemette, P.; Groza, V.; Yang, Y. Performance of a Contrarotating Small Wind Energy Converter. *ISRN Mech. Eng.* **2011**, *2011*, 1–10. [[CrossRef](#)]
10. Kanemoto, T.; Galal, A. Development of Intelligent Wind Turbine Generator with Tandem Wind Rotors and Double Rotational Armatures (1st Report, Superior Operation of Tandem Wind Rotors). *JSME Int. J. Ser. B* **2006**, *49*, 450–457. [[CrossRef](#)]
11. Herzog, R.; Mûriers, L. Performance and Stability of a Counter-Rotating Windmill Using a Planetary Gearing: Measurements and Simulation. In Proceedings of the European Wind Energy Conference & Exhibition, Warsaw, Poland, 20–23 April 2010; Available online: <https://www.researchgate.net/publication/236683548> (accessed on 25 August 2018).
12. Wacinski, A. Drive Device for a Windmill Provided with Two Counter-Rotative Propellers. US Patent 7,384 239 B2, 10 June 2008.
13. Neagoe, M.; Saulescu, R.; Jaliu, C. Design and Simulation of a 1 DOF Planetary Speed Increaser for Counter-Rotating Wind Turbines with Counter-Rotating Electric Generators. *Energies* **2019**, *12*, 1754. [[CrossRef](#)]
14. Habash, R.W.Y.; Groza, V.; Yang, Y.; Blouin, C.; Guillemette, P. Performance Testing and Control of a Small Wind Energy Converter. In Proceedings of the 2011 Sixth IEEE International Symposium on Electronic Design, Test and Application, DELTA 2011, Queenstown, New Zealand, 17–19 January 2011; pp. 263–268. [[CrossRef](#)]
15. Booker, J.; Mellor, P.H.; Wrobel, R.; Drury, D. A compact, high efficiency contra-rotating generator suitable for wind turbines in the urban environment. *Renew. Energy* **2010**, *35*, 2027–2033. [[CrossRef](#)]
16. Wrobel, R.; Drury, D.; Mellor, P.H.; Booker, J. Contra-rotating modular wound permanent magnet generator for a wind turbine. In Proceedings of the 4th IET International Conference on Power Electronics, Machines and Drives (PEMD 2008), York, UK, 2–4 April 2008; pp. 330–334. [[CrossRef](#)]
17. Mitulet, L.-A.; Oprina, G.; Chihaiia, R.-A.; Nicolae, S.; Nedelcu, A.; Popescu, M.; El-Leathey, L.-A. Wind Tunnel Testing for a New Experimental Model of Counter-rotating Wind Turbine. *Procedia Eng.* **2015**, *100*, 1141–1149. [[CrossRef](#)]
18. Sutikno, P.; Saepudin, D.B. Design and Blade Optimization of Intelligent Wind Turbine. *Int. J. Mech. Mechatron. Eng.* **2010**, *11*, 1–15.

19. Merchant, S.; Gregg, J.; Van Treuren, K.; Gravagne, I. Wind Tunnel Analysis of a Counter-Rotating Wind, In Proceedings of the 2009 ASEE GulfSouthwest Annual Conference Baylor University, Copyright© 2009, American Society for Engineering Education, Waco, TX, USA, 17–19 June 2009; pp. 1–9.
20. Appa, K. *Counter Rotating Wind Turbine System*; EISG Final Report; EISG: Lake Forest, CA, USA, 2002.
21. Lee, S.; Kim, H.; Son, E.; Lee, S. Effects of design parameters on aerodynamic performance of a counter-rotating wind turbine. *Renew. Energy* **2012**, *42*, 140–144. [[CrossRef](#)]
22. Lee, S.; Son, E.; Lee, S. Velocity interference in the rear rotor of a counter-rotating wind turbine. *Renew. Energy* **2013**, *54*, 235–240. [[CrossRef](#)]
23. Sanderse, B.; Pijl, S.; Koreň, B. Review of computational fluid dynamics for wind turbine wake aerodynamics. *Wind. Energy* **2011**, *14*, 799–819. [[CrossRef](#)]
24. Koehuan, V.; Sugiyono, S.; Kamal, S. Investigation of Counter-Rotating Wind Turbine Performance using Computational Fluid Dynamics Simulation. *IOP Conf. Ser. Mater. Sci. Eng.* **2017**, *267*, 12034. [[CrossRef](#)]
25. Mikkelsen, R.F. Actuator Disc Methods Applied to Wind Turbines. Ph.D. Thesis, Technical University of Denmark, Lyngby, Denmark, 2003.
26. Shen, W.Z.; Sørensen, J.N.; Zhang, J. Actuator surface model for wind turbine flow computations. In Proceedings of the European Wind Energy Conference 2007, Milan, Italy, 7–10 May 2007; APA.
27. Sorensen, J.N.; Shen, W.Z. Numerical Modeling of Wind Turbine Wakes. *J. Fluids Eng.* **2002**, *124*, 393–399. [[CrossRef](#)]
28. Smagorinsky, J. General Circulation Experiments with the Primitive Equations. *Mon. Weather Rev.* **1963**, *91*, 99–164. [[CrossRef](#)]
29. Martínez-Tossas, L.A.; Leonardi, S.; Churchfield, M.; Moriarty, P. A Comparison of Actuator Disk and Actuator Line Wind Turbine Models and Best Practices for Their Use. In Proceedings of the 50th AIAA Aerospace Sciences Meeting including the New Horizons Forum and Aerospace Exposition, Tennessee, TN, USA, 9–12 January 2012. [[CrossRef](#)]
30. Pacholczyk, M.; Blecharz, K. Rotor Blade Performance Analysis for Small Counter Rotating Wind Turbine (in Polish). *Zesz. Nauk. Wydz. Elektrotechniki i Autom. Politech. Gdańskiej* **2018**, *61*, 62–64.
31. NWTC Information Portal (SOWFA). Available online: <https://nwtc.nrel.gov/SOWFA> (accessed on 25 August 2018).
32. Pacholczyk, M.; Blecharz, K.; Karkosiński, D. Numerical investigation on the performance of a small counter-rotating wind turbine. *E3S Web Conf.* **2019**, *116*, 00055. [[CrossRef](#)]
33. Pacholczyk, M.; Blecharz, K.; Karkosiński, D. Study on the Influence of an Axial Distance Between Rotors on a Performance of a Small Counter-Rotating Wind Turbine. In Proceedings of the 5th World Congress on New Technologies; Avestia Publishing, Lisbon, Portugal, 18–20 August 2019.



© 2020 by the authors. Licensee MDPI, Basel, Switzerland. This article is an open access article distributed under the terms and conditions of the Creative Commons Attribution (CC BY) license (<http://creativecommons.org/licenses/by/4.0/>).