

# Multi-Objective Optimal Design of Renewable Energy Integrated CCHP System Using PICEA-g

## Authors:

Guozheng Li, Rui Wang, Tao Zhang, Mengjun Ming

Date Submitted: 2020-06-23

Keywords: isolated-mode, multi-objective optimization, FEL, FTL, Renewable and Sustainable Energy, CCHP

## Abstract:

The integration of renewable energies into combined cooling, heating, and power (CCHP) systems has become increasingly popular in recent years. However, the optimization of renewable energies integrated CCHP (RECCHP) systems (i.e., optimal component configurations) is far from being well addressed, especially in isolated mode. This study aims to fill this research gap. A multi-objective optimization model characterizing the system reliability, system cost, and environmental sustainability is constructed. In this model, the objectives include minimization of annual total cost (ATC), carbon dioxide emission (CDE), and loss of energy supply probability (LESP). The decision variables representing the configuration of the RECCHP system include the number of photovoltaic (PV) panels and wind turbines (WTs), the tilt angle of PV panels, the height of WTs, the maximum fuel consumption, and the capacity of battery and heat storage tanks (HSTs). The multi-objective model is solved by a multi-objective evolutionary algorithm, namely, the preference-inspired coevolutionary algorithm (PICEA-g), resulting in a set of Pareto optimal (trade-off) solutions. Then, a decision-making process is demonstrated, selecting a preferred solution amongst those trade-off solutions by further considering the decision-maker preferences. Furthermore, on the optimization of the RECCHP system, operational strategies (i.e., following electric load, FEL, and following thermal load, FTL) are considered, respectively. Experimental results show that the FEL and FTL strategies lead to different optimal configurations. In general, the FTL is recommended in summer and winter, while the FEL is more suitable for spring and autumn. Compared with traditional energy systems, RECCHP has better economic and environmental advantages.

Record Type: Published Article

Submitted To: LAPSE (Living Archive for Process Systems Engineering)

Citation (overall record, always the latest version):

LAPSE:2020.0702

Citation (this specific file, latest version):

LAPSE:2020.0702-1

Citation (this specific file, this version):

LAPSE:2020.0702-1v1

DOI of Published Version: <https://doi.org/10.3390/en11040743>

License: Creative Commons Attribution 4.0 International (CC BY 4.0)

Article

# Multi-Objective Optimal Design of Renewable Energy Integrated CCHP System Using PICEA-g

Guozheng Li, Rui Wang \*, Tao Zhang and Mengjun Ming

College of Systems Engineering, National University of Defense Technology, Changsha 410073, China; liguozheng16@nudt.edu.cn (G.L.); zhangtao@nudt.edu.cn (T.Z.); mmengjun@gmail.com (M.M.)

\* Correspondence: ruiwangnudt@gmail.com; Tel.: +86-188-7496-2006

Received: 19 January 2018; Accepted: 21 March 2018; Published: 25 March 2018



**Abstract:** The integration of renewable energies into combined cooling, heating, and power (CCHP) systems has become increasingly popular in recent years. However, the optimization of renewable energies integrated CCHP (RECCHP) systems (i.e., optimal component configurations) is far from being well addressed, especially in isolated mode. This study aims to fill this research gap. A multi-objective optimization model characterizing the system reliability, system cost, and environmental sustainability is constructed. In this model, the objectives include minimization of annual total cost (ATC), carbon dioxide emission (CDE), and loss of energy supply probability (LESP). The decision variables representing the configuration of the RECCHP system include the number of photovoltaic (PV) panels and wind turbines (WTs), the tilt angle of PV panels, the height of WTs, the maximum fuel consumption, and the capacity of battery and heat storage tanks (HSTs). The multi-objective model is solved by a multi-objective evolutionary algorithm, namely, the preference-inspired coevolutionary algorithm (PICEA-g), resulting in a set of Pareto optimal (trade-off) solutions. Then, a decision-making process is demonstrated, selecting a preferred solution amongst those trade-off solutions by further considering the decision-maker preferences. Furthermore, on the optimization of the RECCHP system, operational strategies (i.e., following electric load, FEL, and following thermal load, FTL) are considered, respectively. Experimental results show that the FEL and FTL strategies lead to different optimal configurations. In general, the FTL is recommended in summer and winter, while the FEL is more suitable for spring and autumn. Compared with traditional energy systems, RECCHP has better economic and environmental advantages.

**Keywords:** CCHP; renewable energy; FEL; FTL; multi-objective optimization; isolated-mode

## 1. Introduction

The combined cooling, heating, and power (CCHP) system—also known as the tri-generation system—has received increasing attention in both academia and industry in recent years because of its high efficiency in the use of energy sources [1,2]. The CCHP system has shown to be capable of converting about 80% of the available fuel into usable energy, which is much more efficient than separation systems [3,4]. Given the depletion of fossil energy and degradation of environment, renewable energies are currently strongly recommended to be integrated into CCHP systems [5]. The use of renewable energies facilitates the application of CCHP systems in places where the power grid is unavailable (e.g., islands, plateaus, deserts).

The early studies of CCHP system optimization mainly focus on the system cost minimization [6–10]. Recently, researchers have started to consider system reliability and environmental sustainability, in addition to the system cost [4,11–15]. Since the optimization model is often non-convex and/or non-linear and involves both integer and real decision variables, a number of algorithms have been proposed to solve the model. For example, Lahdelma et al. [16] modelled the hourly CCHP operation

as a linear programming problem, and used the power simplex algorithm to solve it. Rong et al. [17] proposed different algorithms for their CCHP models, such as the extended power simplex algorithm and the relaxed ramp-constraints [18]. Hussain et al. [19] developed a mixed integer linear programming-based CCHP model to minimize the daily operation cost of the external energy network. Other related studies include [16,20–24]. However, since mathematical programming methods may face difficulty in some complex optimization problems, intelligent algorithms such as particle swarm algorithm (PSO) [25,26] and genetic algorithm (GA) [27] have also been used. For instance, Wang et al. [25,28] employed PSO and GA to find the optimal configuration of a CCHP system such that the system cost is minimized. In [29] the primary energy saving (PES), energy efficiency ( $\eta_{energy}$ ), and CO<sub>2</sub> emission reduction (CER) are employed to evaluate the performances of CCHP systems for a hypothetical building in Dalian (China). Wei et al. adopted the non-dominated sorting genetic algorithm-II to find a set of Pareto optimal configurations [14]. Gimelli et al. [30] used a predictive analysis method to optimize CCHP system configuration with the aim of maximizing the global energy saving. Muccillo et al. [31] carried out predictive analyses first, then employed a multi-objective approach to find optimal plant configurations that maximize the energy production while guaranteeing reasonable profitability. The results show that the proposed method can save over 17% primary energy. Alvarado et al. [32] presented a technology selection and operation (TSO) model for distributed energy systems in which the life-time cost, carbon emissions, and real-time energy prices and demands are used as indicators. This model provides meaningful insights that enable decision-makers to make more assured technical investments. Wang et al. [33] proposed a two-stage model (i.e., day-ahead cursory and real-time scheduling). The Search Improvement Process-Chaotic Optimization-Particle Swarm Optimization-Elite Retention algorithm (SIP-CO-PSO-ERS) is used to solve the model, and is shown to converge faster than traditional approaches. It is worth mentioning that the optimal configuration for a particular scenario may not be optimal when the scenario is changed. To overcome this shortage, very recently Gimelli et al. [34] developed a simple yet effective approach which can identify the most stable plant solutions through a multi-objective robust optimization.

There are also studies applying renewable energies to CCHP systems. For example, Soheyli et al. [35] built a novel CCHP system with renewable energies, and applied the co-constrained multi-objective particle swarm optimization algorithm to optimize the model. Wu et al. [36] proposed an optimization CHP micro-grid containing renewable energies. The model is shown to be able to reduce the operation cost of the micro-grid, and simultaneously to effectively increase the utilization rate of renewable energies. A photovoltaic-assisted CCHP system is introduced in [37], and a type of solar-assisted tri-generation system is analyzed in [38,39]. Both show that the system is efficient in terms of energy usage, emission reduction, and economic benefits [40]. Kang et al. [41] investigate the environmental and energy potential of a renewable CCHP system in a residential application under Korea and Canada weather conditions. In addition, there are two widely adopted operation strategies in CCHP systems: following electric load (FEL) and following thermal load (FTL) [3,11]. Rey et al. [42] reveal that the micro-CCHP system is suitable in mild weather during the summer season in the FTL strategy. Wang et al. [43] explain that the FTL strategy is more suitable for cold areas, while the FEL prefers mild climate zones. According to the life cycle assessment, the FTL is found to be more environmentally-friendly than the FEL in terms of energy saving and emission reduction [44,45]. However, the above studies on FEL and FTL are not very applicable to CCHP systems containing renewable energies. Therefore, new research needs to redesign the FEL and FTL operating strategies for the RECCHP system.

Although many studies in the literature have investigated the optimization of CCHP systems, the multi-objective optimization of isolated CCHP systems embedded with renewable energies has not been systematically studied—in particular, the performance of CCHP systems under the use of both FEL and FTL strategies and more detailed considerations about component models of stand-alone RECCHP systems. This study fills in this research gap. Its main contributions are as follows: (I) the system architecture of a renewable energies integrated CCHP (RECCHP) system in isolated mode

is presented; (II) a multi-objective model considering the criteria of system cost, system reliability, and environmental sustainability is built to optimize configurations of the RECCHP system; (III) PICEA-g has been applied for the first time to the design of a multi-objective CCHP system with renewable energies [46]. Lastly, the effect of improved FEL and FTL strategies is discussed for the RECCHP system.

The rest of this paper is organized as follows. Section 2 introduces the structure, mathematical model, evaluation criteria, and operational strategies of the considered RECCHP system. Section 3 elaborates the problem solver (i.e., the multi-objective evolutionary algorithm, PICEA-g). The case study and results are discussed in Section 4. Section 5 concludes this study and identifies some future research directions.

## 2. System Model of CCHP System with Renewable Energies in Isolated Mode

### 2.1. Traditional Energy System

Traditional energy systems in isolated mode provide the electrical demand by the power generated by the generator directly and meet the heat and cold demand using electric boilers and electric chillers, respectively (see Figure 1). In other words, all electric, heat, and cold demands are from the electricity generated by a generator, which means the waste heat generated during generator operation will be wasted.

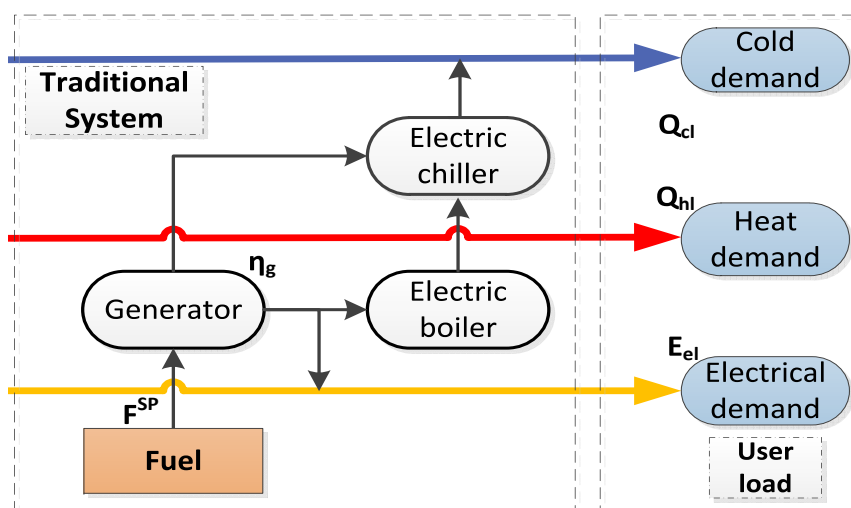


Figure 1. Illustration of the traditional energy system structure in isolated mode.

### 2.2. Structure of RECCHP System

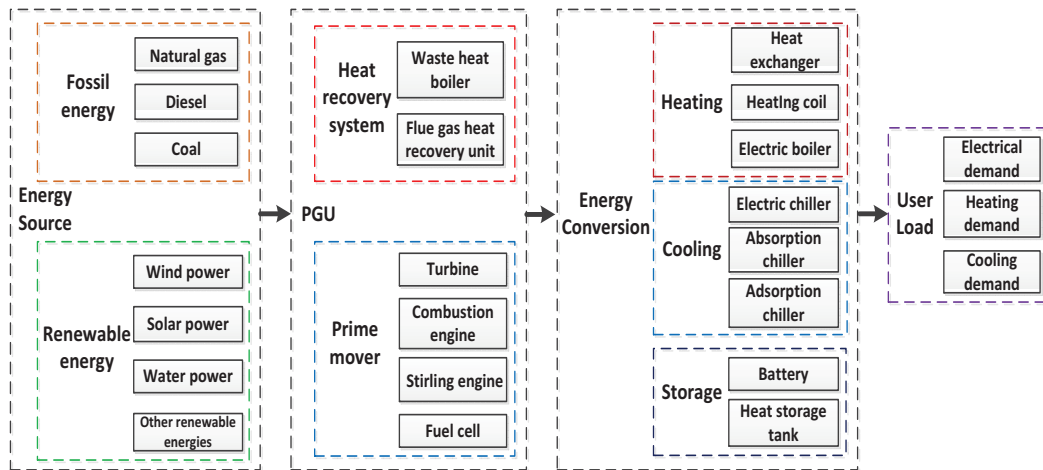
A typical CCHP system mainly contains four parts: energy sources, power generation units (PGUs), energy conversion devices, and user load demands, as shown in Figure 2.

Energy sources include fossil energies (e.g., natural gas, coal); and renewable energies (e.g., solar energy, wind energy). A PGU contains prime movers and heat recovery systems. The prime movers can be boilers, turbines, internal combustion engines, Stirling machines, fuel cells, and so on. Usually, the prime mover works with the heat recovery system, producing electricity and thermal energy. Conversion devices contain heat conversion devices (e.g., heat exchangers, electric boilers, and heating coils), cold conversion devices (e.g., electric chillers, absorption chillers, and adsorption chillers), and storage devices (e.g., batteries and heat storage tanks, HSTs) [25,47]. The electrical, cold, and heat energy are the main forms of user demand. The thermal demand is equal to the sum of cold and heat demand from user.

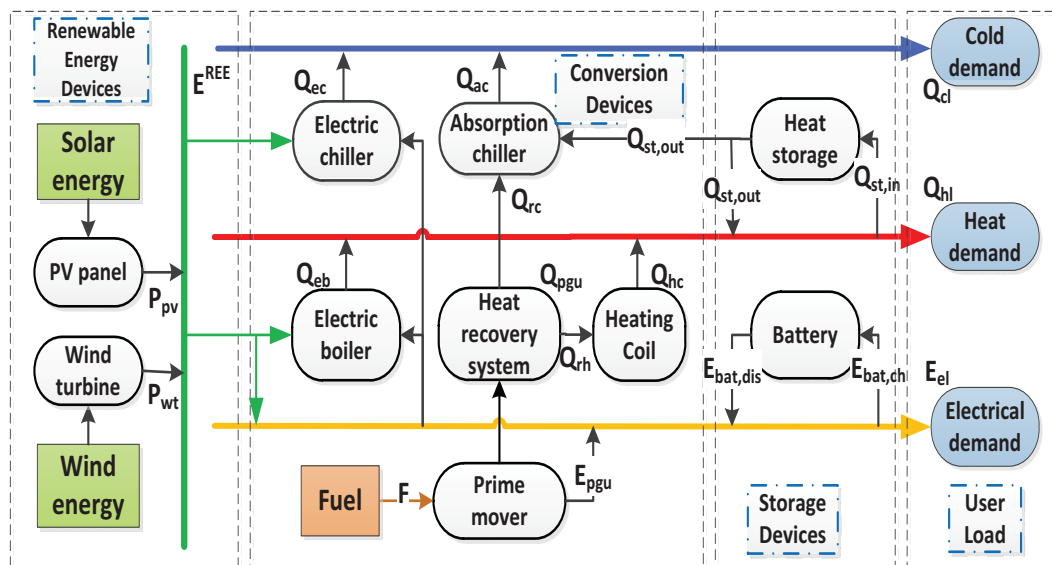
According to the composition of the CCHP system, Figure 3 illustrates the structure of the RECCHP system in isolated mode. The RECCHP system contains four parts: renewable energies



devices, conversion devices, storage devices, and the user load. The renewable energies are converted into usable energy through photovoltaic (PV) panels and wind turbines (WTs). The function of the conversion device is to change the form of energy to meet the user demand. Additionally, given the stochastic feature of renewable energies, energy storage devices are required to improve the energy efficiency and system reliability. The introduction to the working procedure of the RECCHP is in Section 2.4.



**Figure 2.** Illustration of the composition of a typical combined cooling, heating, and power (CCHP) system. PGU: power generation unit.



**Figure 3.** Illustration of the renewable energies integrated CCHP (RECCHP) system structure in isolated mode. PV: photovoltaic.

### 2.3. Component Model

In order to formulate the performance of the RECCHP system, the mathematical models including the PV panel, the wind turbine, the battery, HST, and PGU are constructed as follows.

### 2.3.1. PV Panel

PV panels convert solar irradiation into electricity. The output electricity of a PV panel can be calculated as Equation (6) [48]. From the horizontal component of the solar radiation ( $S$ ), the incident radiation on the inclined surface ( $S_t$ ) can be calculated as follows [49]:

$$S_t = \frac{S}{\sin(h)}, \quad (1)$$

$$S_p = S_t \cdot \sin(h + \beta). \quad (2)$$

As shown in Figure 4,  $S_p$  represents solar radiation perpendicular to the inclined PV panel, which is used to calculate the maximum output power of PV panels. The relationship equations are shown as follows [50,51]:

$$T_c(t) = T_a(t) + \frac{NCOT - 20}{800} \cdot S_p(t, \beta), \quad (3)$$

$$I_{sc}(t) = [I_{sc}^{STC} + \eta_I(T_c(t) - 25)] \cdot \frac{S_p(t, \beta)}{1000}, \quad (4)$$

$$V_{oc}(t) = V_{oc}^{STC} - \eta_V \cdot T_c(t), \quad (5)$$

$$E_{pv}(t, \beta) = N_{pv} \cdot I_{sc}(t, \beta) \cdot V_{oc} \cdot FF(t), \quad (6)$$

where  $FF$  and  $N_{pv}$  respectively represent the fill factor and the total number of PV panels.  $I_{sc}(t)$  and  $V_{oc}(t)$  respectively denote the short-circuit current and open-circuit voltage.  $I_{sc}^{STC}$  and  $V_{oc}^{STC}$  are short-circuit current and open-circuit voltage under standard test condition (STC).  $\eta_I$  and  $\eta_V$  represent short-circuit current temperature coefficient and open-circuit voltage temperature coefficient. NCOT is nominal cell operating temperature.

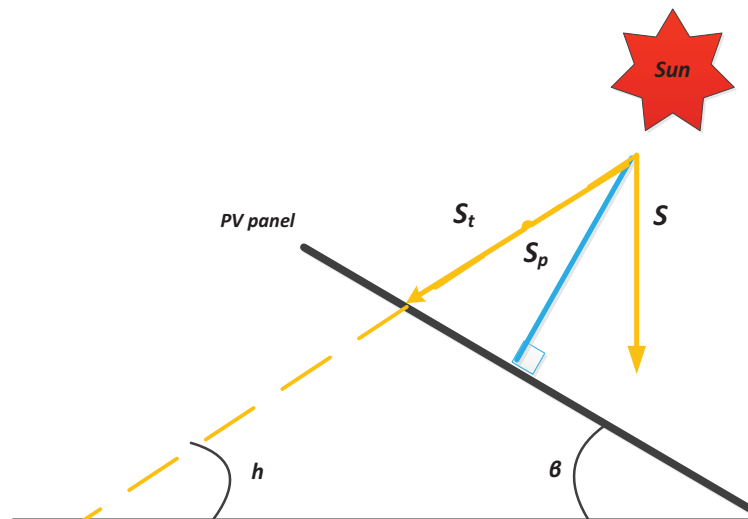


Figure 4. Representation of solar irradiation.

### 2.3.2. Wind Turbine

Wind power generation is closely related to the wind velocity, and can be calculated as Equation (7) [52]. When the wind speed exceeds  $V_f(m/s)$ , wind turbines stop working to protect themselves.

$$E_{wt}(v) = \begin{cases} 0 & v < V_c \\ \frac{1}{2} \eta_{wt} \cdot \rho \cdot A_{wt} \cdot v^3 & V_c \leq v < V_r \\ P_{wtr} & V_r \leq v < V_f \\ 0 & v \geq V_f \end{cases} \quad (7)$$

with:

$$v = v_r \left( \frac{H_{tow}}{H_r} \right)^\gamma, \quad (8)$$

where  $V_c$  and  $V_f$  are the cut-in and the cut-off wind velocity, respectively;  $V_r$  is the wind velocity measured at the reference height  $H_r$ .  $\eta_{wt}$  is the coefficient of wind power generation. The air density is marked as  $\rho$ .  $A_{wt}$  represents the cross-section of the rotor and  $P_{wtr}$  is the rated power of the wind turbine.  $H_{tow}$  is the height of the wind tower. The power law coefficient is denoted as  $\gamma$ .

### 2.3.3. Renewable Energy Generation

As can be seen from Figure 3, the renewable energy generation ( $E^{REE}$ ) comes from the solar energy ( $E_{pv}$ ) and the wind power generation ( $E_{wt}$ ). Therefore, it can be calculated by Equation (9) and Equation (10):

$$E^{REE} = E_{pv} + E_{wt}, \quad (9)$$

$$E^{REE} = E_{el}^{REE} + \frac{Q_{eb}}{\eta_{eb}} + \frac{Q_{ec}}{\eta_{ec}} + E_{bat}^{REE}, \quad (10)$$

where  $E_{el}^{REE}$  is renewable energy generation meeting the electrical demand.  $Q_{eb}$  and  $Q_{ec}$  are the heat and cold energy generated by electric boiler and electric chiller.  $\eta_{eb}$  and  $\eta_{ec}$  represent the efficiency of the electric boiler and electric chiller, respectively.  $E_{bat}^{REE}$  is excess renewable energy generation stored in the battery.

### 2.3.4. Battery

The activity procedure of the battery is described as Equation (11) [50]:

$$\begin{aligned} Soc(t+1) &= Soc(t) + \frac{E^{BAT}(t) \cdot \eta_{ch}^{BAT}}{C_{max}^{BAT}}, \\ Soc(t+1) &= Soc(t) - \frac{E^{BAT}(t)}{C_{max}^{BAT} \cdot \eta_{dis}^{BAT}}, \end{aligned} \quad (11)$$

S.T.

$$\begin{aligned} Soc_{min} &\leq Soc(t) \leq Soc_{max}, \\ 0 &\leq E_{ch}^{BAT}(t) \leq E_{ch,max}^{BAT}, \\ 0 &\leq E_{dis}^{BAT}(t) \leq E_{dis,max}^{BAT}, \end{aligned} \quad (12)$$

where  $E_{ch}^{BAT}$  and  $E_{dis}^{BAT}$  are the charging/discharging power of the battery, retained within  $[0, E_{ch,max}^{BAT}]$  and  $[0, E_{dis,max}^{BAT}]$ , respectively. Round-trip efficiency is denoted as  $\eta_{ch}^{BAT}$  and  $\eta_{dis}^{BAT}$ . State of charge denoted as  $Soc$  is an important specification of the battery, retained within  $[Soc_{min}, Soc_{max}]$ .  $t(t = 1, 2, \dots, 8760)$  is the time step.

### 2.3.5. Heat Storage Tank

The function of the HST is described as Equations (13) and (14):

$$C^{HST}(t+1) = C^{HST}(t) + Q_{in}^{HST}(t) \cdot \eta_{in}^{HST}, \quad (13)$$

$$C^{HST}(t+1) = C^{HST}(t) - \frac{Q_{out}^{HST}(t)}{\eta_{out}^{HST}}. \quad (14)$$

Constraints in the process are explained as follows:

$$\begin{aligned} C_{min}^{HST} &\leq C^{HST}(t) \leq C_{max}^{HST}, \\ 0 &\leq Q_{in}^{HST}(t) \leq Q_{in,max}^{HST}, \\ 0 &\leq Q_{out}^{HST}(t) \leq Q_{out,max}^{HST}, \end{aligned} \quad (15)$$

where  $Q_{in}^{HST}$  and  $Q_{out}^{HST}$  denote the input and output thermal energy of HST interacted with outside, retained within  $[0, Q_{in,max}^{HST}]$  and  $[0, Q_{out,max}^{HST}]$ , respectively;  $\eta_{in}^{HST}$  and  $\eta_{out}^{HST}$  are their efficiency.  $C^{HST}$  represents the content of HST.

### 2.3.6. Power Generation Unit

The electricity ( $E_{pgu}$ ) and the thermal energy ( $Q_{pgu}$ ) generated by the PGU are calculated as follows:

$$E_{pgu} = F \cdot \eta_{pgu}, \quad (16)$$

$$Q_{pgu} = F \cdot (1 - \eta_{pgu}) \cdot \eta_r, \quad (17)$$

$$Q_{pgu} = Q_{rh} + Q_{rc} = \frac{Q_{ac}}{COP_{ac}} + \frac{Q_{hc}}{\eta_{hc}}, \quad (18)$$

where  $F$  is the fuel supplied to the PGU, and it produces electricity ( $E_{pgu}$ ) and waste heat as a byproduct. The waste heat can be reused as thermal energy ( $Q_{pgu}$ ) by a heat recovery system, whose efficiency is  $\eta_r$ . As shown in Figure 3,  $Q_{rc}$  and  $Q_{rh}$  are the recovery heat supplied to the absorption chiller and the heating coil;  $Q_{ac}$  and  $Q_{hc}$  respectively represent the cooling and heating from the absorption chiller and the heating coil. The efficiency of the absorption chiller and heating coil are marked as  $COP_{ac}$  and  $\eta_{hc}$ , respectively.

The electrical and thermal balance of the RECCHP system in isolated mode are defined as Equations (19) and (20):

$$E^{REE} + E_{pgu} - E_{ch}^{BAT} \cdot U_{ch}^{BAT} + E_{dis}^{BAT} \cdot U_{dis}^{BAT} = E_{el}, \quad (19)$$

$$Q_{ec} + Q_{eb} + Q_{ac} + Q_{hc} - Q_{in}^{HST} \cdot V_{in}^{HST} + Q_{out}^{HST} \cdot V_{out}^{HST} = Q_{cl} + Q_{hl}, \quad (20)$$

S.T.

$$\begin{aligned} U_{ch}^{BAT} + U_{dis}^{BAT} &\leq 1, \\ V_{in}^{HST} + V_{out}^{HST} &\leq 1, \end{aligned} \quad (21)$$

where  $E_{el}$ ,  $Q_{hl}$ , and  $Q_{cl}$  represent the electrical, heat, and cold demand, respectively.  $U_{ch}^{BAT}$ ,  $U_{dis}^{BAT}$ ,  $V_{in}^{HST}$ , and  $V_{out}^{HST}$  are binary variables denoting the operation status of the battery and HST.

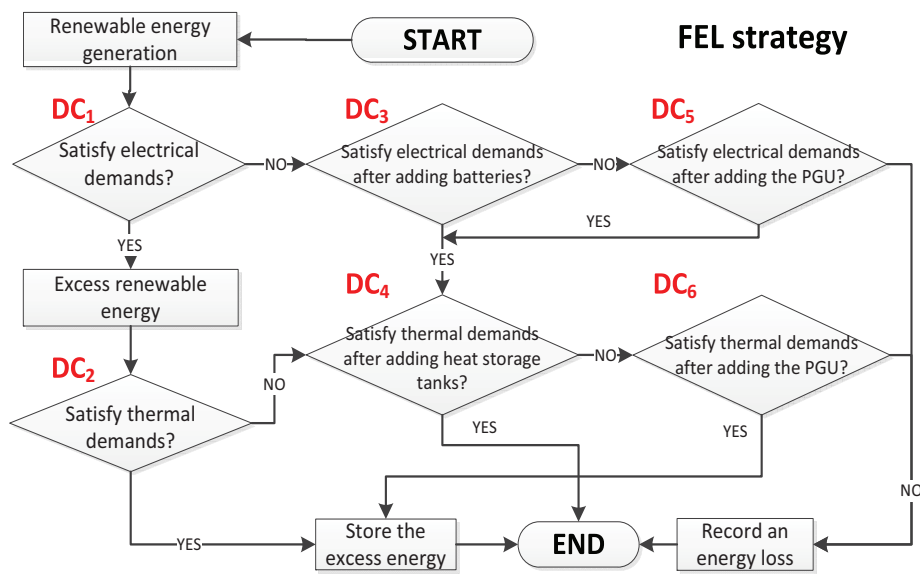
## 2.4. Operation Strategy

Typically, the energy supply procedure in the RECCHP system is as follows. First, the power generated by renewable energies is used to meet the load demand (to maximize the usage of renewable energies). If the load demand is not satisfied, storage devices start working to supply energy. If the load demand still cannot be satisfied, the PGU starts to work. When the energy of the storage device is

used up and the PGU works at rated power, the load demand is still unmet, then some load demands will be cut off and a loss of energy supply is recorded. With respect to the FEL and FTL operation strategies, the detailed RECCHP operational process is described in the following sections.

#### 2.4.1. FEL Operation Strategy

In the FEL operation strategy, the electrical demand should be satisfied with a higher priority than the thermal demand. In this case, no extra electricity will be generated from the RECCHP system, since the amount of electricity from RECCHP follows the electrical demand. Besides, the thermal energy generated from the RECCHP system meets the thermal demand for the heating and cooling process. Note that the extra thermal energy might be generated by the PGU, which would be stored in the HST. Moreover, through the electric boiler and electric chiller, the electricity from the battery can be easily converted to the thermal energy used to meet the thermal demand. The FEL operational strategy is shown in Figure 5.



**Figure 5.** Flowchart of the following electric load (FEL) operation strategy. DC: discriminant condition.

**Case 1.** If  $DC_1$  is *TRUE*, the electrical load demand is fully met by the renewable energy generation. The discriminant condition (DC) is expressed as Equation (22):

$$DC_1 : E^{REE} \geq E_{el}. \quad (22)$$

Then, the RECCHP system runs as follows:

1. If  $DC_2$  is *TRUE*, excess renewable energy is stored in the battery until it is fully charged. The discriminant condition is expressed as Equation (23):

$$DC_2 : E^{REE} \geq E_l, \quad (23)$$

with:

$$E_l = E_{el} + \frac{Q_{cl}}{\eta_{ec}} + \frac{Q_{hl}}{\eta_{eb}}, \quad (24)$$

where  $E_l$  is the amount of renewable energy generation meeting load demands.

2. If  $DC_2$  is *FALSE* and  $DC_4$  is *TRUE*, HST starts working to supply the thermal energy. The discriminant condition is expressed as Equation (25). The remaining cold and heat demand are denoted as  $Q_{cl}^R$  and  $Q_{hl}^R$ .

$$DC_4 : Q_{out}^{HST} \cdot \eta_{out}^{HST} \geq Q_{cl}^R + Q_{hl}^R \quad (25)$$

3. If  $DC_4$  is *FALSE* and  $DC_6$  is *TRUE*, PGU starts working to meet the gap of the thermal demand. Meanwhile, the unused electricity is stored into batteries. The discriminant condition is shown as Equation (26):

$$DC_6 : Q_{out,max}^{HST} \cdot \eta_{out}^{HST} + Q_{pgu} \geq Q_{hl}^R + Q_{cl}^R. \quad (26)$$

4. If  $DC_6$  is *FALSE*, a loss of the thermal energy is recorded, that is, the count of the thermal energy loss ( $LossCount_q$ ) plus one, as defined in Equation (27). In this state, HST is exhausted and PGU works at the rated power. The unused electricity is used to charge batteries.

$$LossCount_q = LossCount_q + 1 \quad (27)$$

**Case 2.** If  $DC_1$  is *FALSE* and  $DC_3$  is *TRUE*, the system runs as follows. The discriminant condition is expressed as Equation (28):

$$DC_3 : E^{REE} + E_{dis}^{BAT} \cdot \eta_{dis}^{BAT} \geq E_{el}. \quad (28)$$

1. If  $DC_4$  is *TRUE*, HST starts to supply the thermal energy. The discriminant condition is expressed as Equation (29).

$$DC_4 : Q_{out}^{HST} \cdot \eta_{out}^{HST} \geq \frac{Q_{hl}}{\eta_{hc}} + \frac{Q_{cl}}{COP_{ac}} \quad (29)$$

2. If  $DC_4$  is *FALSE* and  $DC_6$  is *TRUE*, PGU starts to work. Meanwhile, the unused electricity is stored in batteries. The discriminant condition is expressed as Equation (30):

$$DC_6 : Q_{out,max}^{HST} \cdot \eta_{out}^{HST} + Q_{pgu} \geq \frac{Q_{hl}}{\eta_{hc}} + \frac{Q_{cl}}{COP_{ac}}. \quad (30)$$

3. If  $DC_6$  is *FALSE*, a loss of the thermal energy is recorded and  $LossCount_q$  increases one, as defined in Equation (27). In this state, HST is used up and PGU works at the rated power. Meanwhile, the unused electrical energy is stored into batteries.

**Case 3.** If  $DC_3$  is *FALSE* and  $DC_5$  is *TRUE*, the next steps are the same as 1, 2, and 3 in **Case 2**. The discriminant condition is expressed as Equation (31):

$$DC_5 : E^{REE} + E_{dis,max}^{BAT} \cdot \eta_{dis}^{BAT} + E_{pgu} \geq E_{el}. \quad (31)$$

**Case 4.** If  $DC_5$  is *FALSE*, a loss of the electrical energy is recorded; that is, the count of electrical energy loss ( $LossCount_p$ ) plus one, defined as Equation (32). In this state, batteries are exhausted and PGU works at the rated power. In addition, the remaining thermal energy is stored into HST.

$$LossCount_p = LossCount_p + 1 \quad (32)$$

#### 2.4.2. FTL Operation Strategy

In the FTL operation strategy, the thermal demand is satisfied with a higher priority than the electrical demand. In this case, no extra thermal energy will be generated, since the amount of thermal energy from RECCHP follows the thermal demand. Additionally, excess electricity would be stored in batteries if the electrical demand is less than the electricity from RECCHP system. The FTL operational strategy is shown in Figure 6.

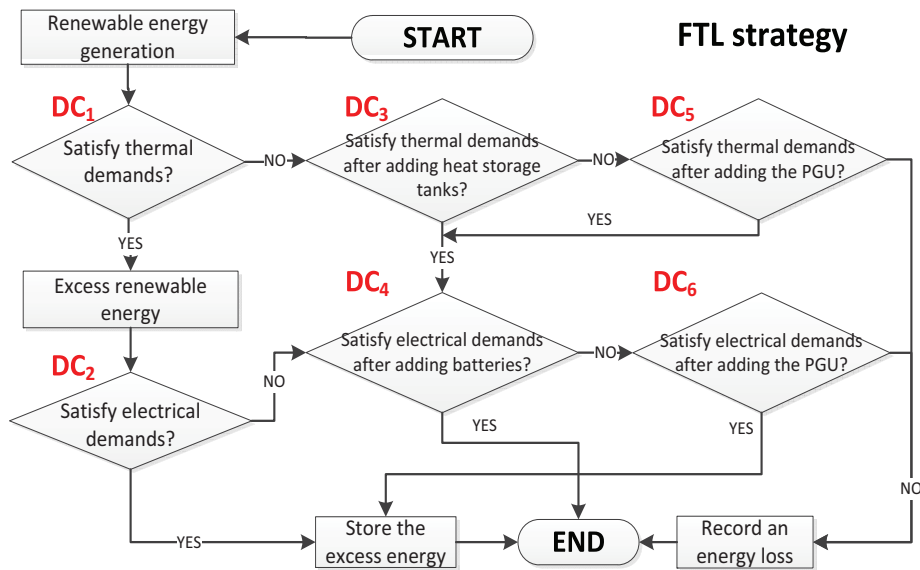


Figure 6. Flowchart of the following thermal load (FTL) operation strategy.

The operational details of the FTL strategy are analogous to the FEL strategy, and thus are not repeated here. However, the related discriminant condition and flowchart are described in Algorithm 1.

---

**Algorithm 1:** Flowchart of FTL

---

```

1  if  $DC_1 : E^{REE} \geq Q_{cl}/\eta_{ec} - Q_{hl}/\eta_{eb}$  then
2  |   if  $DC_2 : E^{REE} \geq E_l$  then
3  |   |   else if  $DC_4 : E^{REE} + E_{dis}^{BAT} \cdot \eta_{dis}^{BAT} \geq E_l$  then
4  |   |   |   else if  $DC_6 : E^{REE} + E_{dis,max}^{BAT} \cdot \eta_{dis}^{BAT} + E_{pgu} \geq E_l$  then
5  |   |   |   |   else
6  |   |   |   |   |    $LossCount_p+1$ 
7  |   |   |   |   |   end
8  |   |   |   |   |   else if  $DC_3 : Q_{out}^{HST} \cdot \eta_{out}^{HST} \geq Q_{hl}^R + Q_{cl}^R$  then
9  |   |   |   |   |   |   if  $DC_4 : E_{dis}^{BAT} \cdot \eta_{dis}^{BAT} \geq E_{el}$  then
10 |   |   |   |   |   |   |   else if  $DC_6 : E^{REE} + E_{dis,max}^{BAT} \cdot \eta_{dis}^{BAT} + E_{pgu} \geq E_l$  then
11 |   |   |   |   |   |   |   |   else
12 |   |   |   |   |   |   |   |   |    $LossCount_p+1$ 
13 |   |   |   |   |   |   |   |   |   end
14 |   |   |   |   |   |   |   |   |   else if  $DC_5 : Q_{out,max}^{HST} \cdot \eta_{out}^{HST} + Q_{pgu} \geq Q_{hl}^R + Q_{cl}^R$  then
15 |   |   |   |   |   |   |   |   |   |   if  $DC_4 : E_{dis}^{BAT} \cdot \eta_{dis}^{BAT} \geq E_{el}$  then
16 |   |   |   |   |   |   |   |   |   |   |   else if  $DC_6 : E^{REE} + E_{dis,max}^{BAT} \cdot \eta_{dis}^{BAT} + E_{pgu} \geq E_l$  then
17 |   |   |   |   |   |   |   |   |   |   |   |   else
18 |   |   |   |   |   |   |   |   |   |   |   |   |    $LossCount_p+1$ 
19 |   |   |   |   |   |   |   |   |   |   |   |   |   end
20 |   |   |   |   |   |   |   |   |   |   |   |   |   else
21 |   |   |   |   |   |   |   |   |   |   |   |   |   |    $LossCount_q+1$ 
22 |   |   |   |   |   |   |   |   |   |   |   |   |   |   end

```

---



### 3. RECCHP System Optimization Model Using PICEA-g

#### 3.1. Overview of PICEA-g

The optimization problems of the above RECCHP model are seen as multi-objective problems (MOPs), which is implemented in MATLAB (2015(b), MathWorks, Natick, MA, USA) and three objective functions (i.e., annual total cost (ATC), carbon dioxide emission (CDE), and loss of energy supply probability (LESP)) are optimized simultaneously using a multi-objective evolutionary algorithm. MOPs often appear in real-world design scenarios, requiring simultaneous optimization of two or more goals. As these objectives are generally conflicting with each other, the optimal solution of MOPs is not a single one, but rather a set of Pareto optimal solutions [53–55]. Due to the population-based approach, the multi-objective evolutionary algorithms are well-suited to solve the MOPs, since they can naturally lead to an approximately trade-off surface (or Pareto front) in operation.

The multi-objective evolutionary algorithms aim to find solutions satisfying all the conflicting objectives ( $f$ ) simultaneously. Without loss of generality, a general multi-objective evolutionary minimization problem is stated as follows:

$$\text{Minimize } F(x) = (f_1(x), f_2(x), \dots, f_m(x)), \quad (33)$$

S.T.

$$x \in \Omega, \quad (34)$$

$$g_i(x) \leq 0 \quad i = 1, 2, \dots, p, \quad (35)$$

$$h_j(x) = 0 \quad j = 1, 2, \dots, q, \quad (36)$$

where  $\Omega$  is the decision space. A solution  $x$  is a vector of  $n$  decision variables:  $x = x_1, x_2, \dots, x_n$ .  $m$  is the number of objectives;  $g_i(x)$  and  $h_j(x)$  are the inequality and equality constraints, and  $p$  and  $q$  are the number of them, respectively.  $F: \Omega \rightarrow R^m$  include  $m$  real-valued objective functions and  $R^m$  represents the objective space.

In this study, the state-of-the-art MOEA, PICEA-g, is applied as the problem solver. It is generally agreed that a set of preferences could orientate the search toward a subset of Pareto front interested by the decision maker; that is, different preferences sets may result in different Pareto fronts. The PICEA-g is a co-evolutionary algorithm in which the candidate solutions are co-evolved with a set of goal vectors. The formulations for calculating the fitness  $F_s$  of the candidate solution  $s$  and the fitness  $F_g$  of the preference  $g$  is given as follows [46]:

$$F_s = 0 + \sum_{g \in G \cup G_c | s \leq g} \frac{1}{n_g}, \quad (37)$$

$$F_g = \frac{1}{1 + \alpha}, \quad (38)$$

$$\alpha(v) = \begin{cases} 1 & n_g = 0 \\ \frac{n_g - 1}{2N - 1} & \text{otherwise} \end{cases}, \quad (39)$$

where  $n_g$  represents the number of solutions satisfying the preference  $g$ .  $N$  is the population size of candidate solutions.  $G$  denotes the initial goal vectors set and  $G_c$  is the goal vectors set after genetic variation. when  $s$  does not satisfy any  $g$ , the fitness  $F_s$  is defined as 0.

The candidate solutions try to satisfy (Pareto dominate) as many goal vectors as possible, being guided towards the Pareto optimal front. The goal vectors try to avoid being satisfied by candidate solutions. Thus, the main idea of PICEA-g is that if multiple sets of hypothetical preferences are

specified during the co-evolution process simultaneously, a meaningful subset of the Pareto front for a decision maker can be achieved. PICEA-g has been demonstrated as effective both on benchmarks and some real-world applications [50,56,57]. For more information about PICEA-g, please refer to the literature [46,58,59]. The source code of PICEA-g is available online at: <http://ruiwangnudet.gotoip3.com/optimization.html>.

### 3.2. Optimization Objectives

Three objectives from the aspects of economy, environment, and reliability are considered in the optimization of the RECCHP system. The three objectives are annual total cost, carbon dioxide emission, and loss of energy supply probability.

#### 3.2.1. Annual Total Cost

Annual total cost (ATC) contains three parts; i.e., the initial investment cost ( $C_{inv}$ ), the operating and maintenance cost ( $C_{om}$ ), and the fuel cost ( $C_F$ ). They are calculated as follows:

$$ATC = C_{inv} + C_{om} + C_F. \quad (40)$$

- The annual operating and maintenance cost can be written as:

$$C_{om} = N_{pv} \cdot OM_{pv} \cdot T_{pv} + N_{wt} \cdot (OM_{wt} + OM_{tow}) \cdot T_{wt} + (OM_{pgu} + OM_{ac} + OM_{hc}) \cdot T_{pgu}. \quad (41)$$

- The annual fuel cost is described as:

$$C_F = \Sigma(F) \cdot F_{price}. \quad (42)$$

- The initial investment cost can be written as:

$$C_{inv} = C_{cap}^{REE} + C_{cap}^{PGU} + C_{cap}^S, \quad (43)$$

with:

$$C_{cap}^{REE} = CRF \cdot \{N_{pv} \cdot Cap_{pv} + N_{wt} \cdot (Cap_{wt} + Cap_{tow} \cdot H_{tow}) + Cap_{ac} + Cap_{hc}\}, \quad (44)$$

$$C_{cap}^{PGU} = Cap_{pgu} \cdot C_{max}^{PGU}, \quad (45)$$

$$C_{cap}^S = Cap_{hst} \cdot C_{max}^{HST} \cdot L/L_{hst} + Cap_{bat} \cdot C_{max}^{BAT} \cdot L/L_{bat}. \quad (46)$$

CRF denotes the capital recovery factor, written as follows:

$$CRF = \frac{i_{real} \cdot (1 + i_{real})^L}{(1 + i_{real})^L - 1}, \quad (47)$$

with:

$$i_{real} = \frac{(i_n - inf)}{(1 + inf)}, \quad (48)$$

where  $C_{cap}^{REE}$ ,  $C_{cap}^{PGU}$ , and  $C_{cap}^S$  respectively represent the capital of the renewable energy device, PGU, and the storage device.  $Cap_{bat}$  and  $Cap_{hst}$  denote the capital of the battery and HST;  $Cap_{wt}$ ,  $Cap_{tow}$ ,  $Cap_{ac}$ ,  $Cap_{hc}$ , and  $Cap_{pgu}$  are the capital of the wind turbine, the wind tower, the absorption chiller [60], the heating coil, and PGU.  $C_{max}^{PGU}$  represents the maximum capacity of the PGU. The operation and maintenance cost of the PV panel, the wind turbine, the wind tower, PGU, the absorption chiller, and the heating coil are respectively marked as  $OM_{pv}$ ,  $OM_{wt}$ ,  $OM_{tow}$ ,  $OM_{pgu}$ ,

$OM_{ac}$ , and  $OM_{hc}$ .  $H_{tow}$  is the height of the wind tower.  $T_{pv}$ ,  $T_{wt}$  and  $T_{pgu}$  represent the running time of the PV panel, the wind turbine, and the PGU.  $i_{real}$  is the annual real interest rate. The annual inflation rate and nominal interest rate, denoted as  $inf$  and  $i_n$ , are 1.5% and 3.75%, respectively.  $L$ ,  $L_{bat}$ , and  $L_{hst}$  are the lifetime of the system, the battery, and HST.  $F_{price}$  is the fuel price.

### 3.2.2. Carbon Dioxide Emission

The carbon dioxide emission (CDE) is used to measure the environmental sustainability of the system, which can be calculated using the emission conversion factor  $\eta_{CO_2}$ .

$$CDE = \sum_{t=1}^{t=8760} F(t) \cdot \eta_{CO_2}, \quad (49)$$

where  $F(t)$  denotes the hourly fuel consumption.

### 3.2.3. Loss of Energy Supply Probability

Loss of energy supply probability (LESP) is defined as the probability of failing to satisfy the electrical demand and the thermal demand. It is calculated by Equation (50):

$$\begin{aligned} LESP &= \frac{\sum_{t=0}^T T(E_{total}(t) < E_{el}(t)) + \sum_{t=0}^T T(Q_{total}(t) < (Q_{cl}(t) + Q_{hl}(t)))}{T} \\ &= \frac{LossCount_p + LossCount_q}{T}, \end{aligned} \quad (50)$$

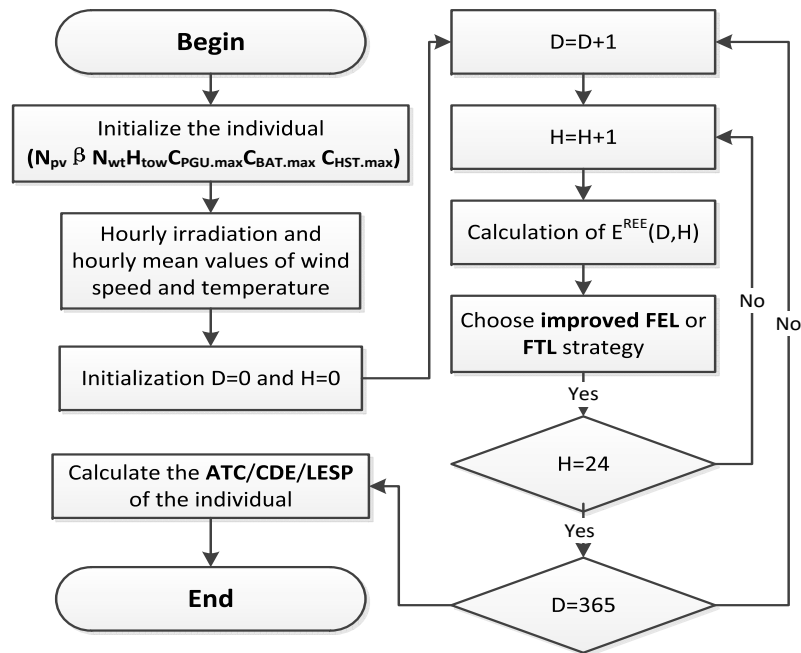
where  $E_{total}$  and  $Q_{total}$  are the available electrical and thermal energy generated from the RECCHP system.  $LossCount_p$  and  $LossCount_q$  represent the count of electrical and thermal energy loss over a year, respectively.

### 3.3. System Simulation and Optimization Model

The decision variables representing the configuration of the RECCHP system include the number of photovoltaic (PV) panels and wind turbines (WTs), the tilt angle of PV panels, the height of WTs, the maximum fuel consumption, and the capacity of battery and heat storage tank (HST). Decision variables related to renewable energies include the number of PV panels ( $N_{pv}$ ) and wind turbines ( $N_{wt}$ ), the inclination angle of the tilted PV panel ( $\beta$ ), and the height of the wind tower ( $H_{tow}$ ), which are obtained from the PV and wind tower model. The maximum capacity of PGU ( $C_{max}^{PGU}$ ) impacts the selection of other devices and the capital cost [61], and thus is also considered as a decision variable obtained from the PGU model. In addition, the maximum capacity of the battery ( $C_{max}^{BAT}$ ) and HST ( $C_{max}^{HST}$ ) are two other decision variables obtained from battery and HST model. In summary, decision variables are written as follows:

$$(N_{pv}, \beta, N_{wt}, H_{tow}, C_{max}^{PGU}, C_{max}^{BAT}, C_{max}^{HST}). \quad (51)$$

The simulation flowchart in the optimization process is described in Figure 7.  $E^{REE}(D, H)$  represents the total renewable energy generation produced by PV panels and wind turbines at hour H of day D. Through this simulation, individuals can obtain the corresponding values of ATC, CDE, and LESP.



**Figure 7.** Flowchart of system simulation. ATC: annual total cost; CDE: carbon dioxide emission; LESP: loss of energy supply probability.

In order to minimize the three objectives (i.e., ATC, LESP, CDE) simultaneously, a three-objective optimization model is constructed as follows:

$$\min F(\mathbf{x}) = \{ATC(\mathbf{x}), LESP(\mathbf{x}), CDE(\mathbf{x})\}. \quad (52)$$

The parameter range is determined with the daily experience to improve solving speed.

$$\mathbf{x} = (N_{pv}, \beta, N_{wt}, H_{tow}, C_{max}^{PGU}, C_{max}^{BAT}, C_{max}^{HST}) \in \Omega, \quad (53)$$

S.T.

$$\begin{aligned} 0 &\leq N_{pv} \leq 20, \\ 0 &\leq \beta \leq 90, \\ 0 &\leq N_{wt} \leq 20, \\ 5 &\leq H_{tow} \leq 30, \\ 0 &\leq C_{max}^{PGU} \leq 1000, \\ 0 &\leq C_{max}^{BAT} \leq 500, \\ 0 &\leq C_{max}^{HST} \leq 500, \end{aligned} \quad (54)$$

where  $\mathbf{x}$  is a vector consisting of decision variables;  $\Omega$  is the decision space; and the objective set is defined as  $\{F(\mathbf{x})|\mathbf{x} \in \Omega\}$ .

## 4. Case Study and Result Analysis

### 4.1. Case Study

#### 4.1.1. Input Data

This section presents a case study to verify the proposed model and algorithm. A place (latitude 41.65°) in Spain is considered. Meteorological data are averaged over ten years that include the solar

radiation intensity, the wind velocity at 10 m altitude, and the environmental temperature, as shown in Figure 8.

The hourly electrical, heat, and cold demand in representative days of spring, autumn, summer, and winter are taken from the study [62]. The distributions of electrical, heat, and cold load demands during a day are shown in Figure 9.

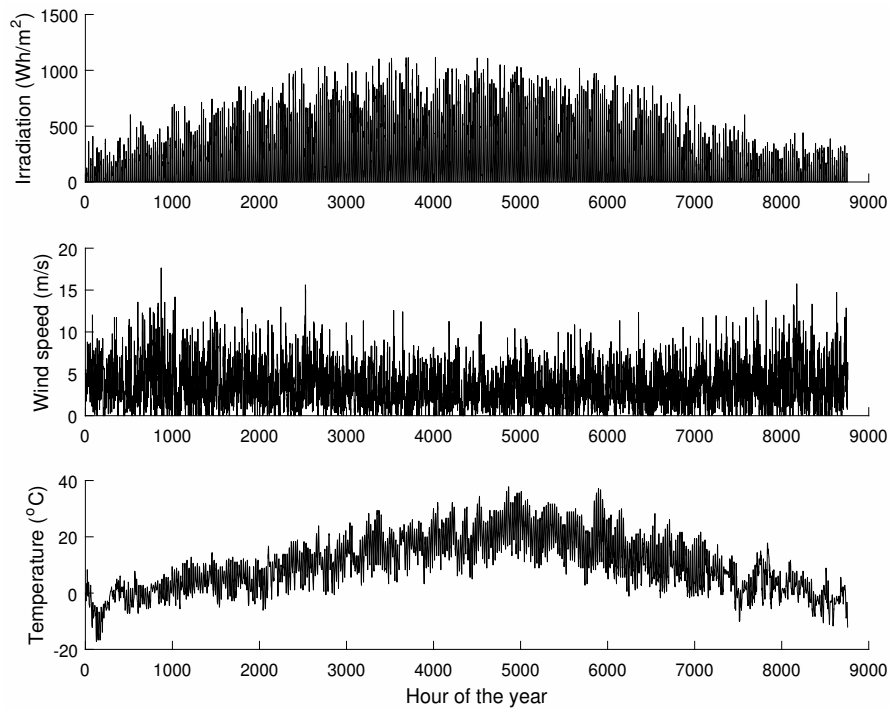


Figure 8. Hourly mean values of meteorological conditions.

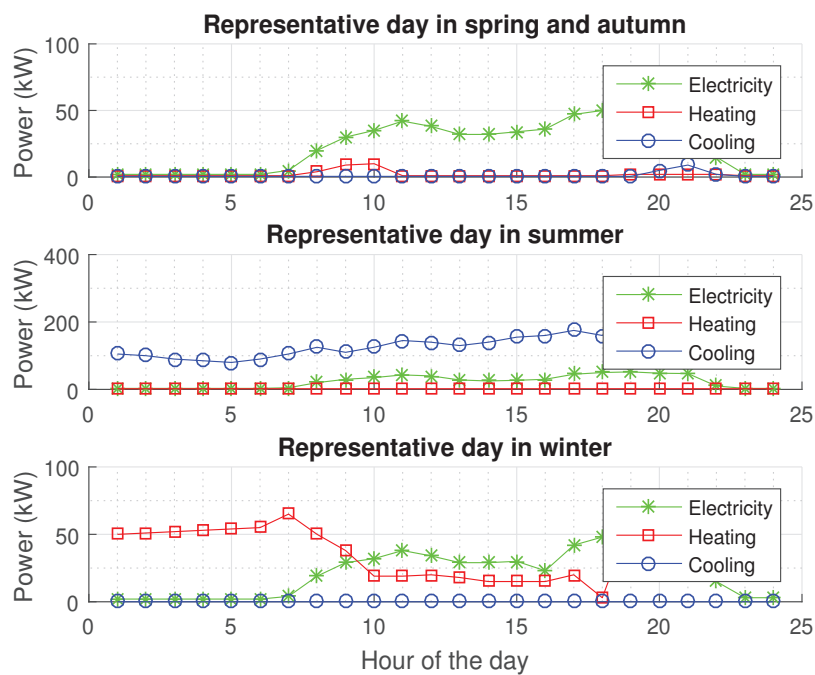


Figure 9. Hourly electrical, cold, and heat demands in representative days.

From Figure 9, the electrical demand is basically stable, while cold and heat demands vary greatly throughout a year. Specifically, the heat demand is large in winter while it is small in summer. The cold demand is the opposite.

#### 4.1.2. Parameters

All parameters related to the RECCHP system are summarized in Tables 1–3 [28,50]. Additionally, the service life of the RECCHP system is assumed as 15 years in this study, and those of the battery and HST are 5 years.

**Table 1.** The specifications for the RECCHP system components. *COP*: coefficient of performance.

Components	$C_{inv}$	$C_{om}$	Lifetime (year)	$\eta$ & <i>COP</i>
PV panel	1000 CNY	0.05 CNY/h	15	0.73
Wind turbine	30,000 CNY	0.4 CNY/h	15	0.4
Wind tower	2000 CNY/m	0.1 CNY/m	15	Null
Battery	200 CNY/kW	0.2 CNY/kW·h	5	0.8/0.8 (ch/dis)
Heat storage tank	200 CNY/kW	0.2 CNY/kW·h	5	0.85/0.85 (in/out)
Electric boiler	5500 CNY	0.1 CNY/kW	15	0.9
Electric chiller	9000 CNY	0.1 CNY/kW	15	3
Absorption chiller	64,000 CNY	0.20 CNY/kW	15	0.7
Heating coil	700 CNY	0.24 CNY/kW	15	0.9
PGU	3800 CNY/kW	0.3 CNY/kW·h	15	0.3
Heat recovery system	3000 CNY/kW	0.2 CNY/kW·h	15	0.8

**Table 2.** Wind turbine modules specifications.

$V_c$	$V_r$	$V_f$	$A_{wt}$	$P_{wtr}$	$H_r$	$\rho$	$\gamma$
4 m/s	14 m/s	20 m/s	12.59 m <sup>2</sup>	10 kW	10 m	1.29 kg/m <sup>3</sup>	0.143

**Table 3.** PV modules specifications. NCOT: nominal cell operating temperature.

$I_{sc}$	$V_{oc}$	$I_{max}$	$V_{max}$	$\eta_I$	$\eta_V$	NCOT
7.22 A	21 V	17	6.47	0.95	0.95	43 °C

The technical characteristics of RECCHP system components as the inputs to the simulation and optimization process are given in Tables 1–3. The specifications, lifetime, and efficiency of all components are presented in Table 1. Table 2 shows the characteristics of wind turbine modules. Additionally, the wind turbine height is limited between 5 m and 30 m, and the rated power of wind turbine ( $P_{wtr}$ ) is 10 kW. The investment cost of a wind turbine tower depends on its length. Besides, Table 3 shows the characteristics of PV modules that encompass the short-circuit current, the open-circuit voltage, the maximum operating voltage, and current. Both short-circuit current temperature coefficient and open-circuit voltage temperature coefficient equal 0.95. The operation and maintenance cost ( $C_{om}$ ) of battery, heat storage tank (HST), PGU, and heat recovery system are related to the operation time. The fuel is liquefied natural gas (LNG) whose price is 6.5 CNY/kg. In addition, the parameters settings of PICEA-g are shown in Table 4.

**Table 4.** Parameter settings of PICEA-g.

Parameter	Value	Parameter	Value
Population size	100	Mutation probability	0.01
Evolutionary generations	100	Position parameter ( $k$ )	18
Crossover probability	0.9	Distance parameter ( $l$ )	14
Length of genes	7	Decision variables ( $nvar$ )	32

#### 4.2. Results and Discussion

The planning time span in this article is one year (8760 h). For each system configuration, we simulated the operation of the various components of the RECCHP system every hour of the year until 8760 h. Then, the indicators of system configuration were obtained (i.e., ATC, CDE, and LESP), determining the system configuration as good or not. Through constant iteration, the system configuration was optimized toward the optimal direction of the indicator. By solving the model with PICEA-g, a set of Pareto optimal solutions was obtained as shown in Figures 10 and 11.

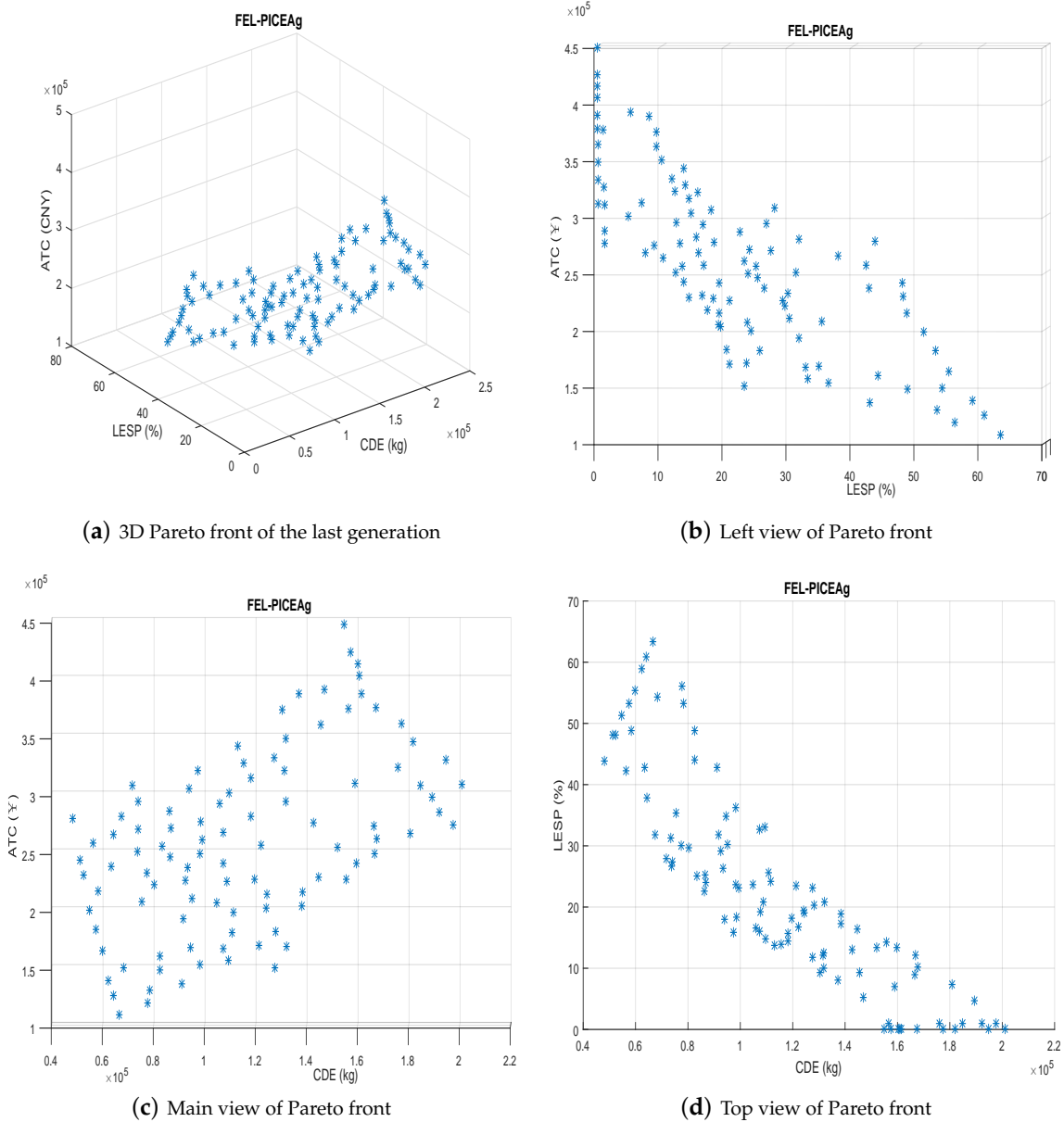
In both Figures 10 and 11, sub-figures (b), (c), and (d) are the left view, main view, and top view of sub-figure (a). As can be seen from sub-figure (b), the results from the optimization problem highlight a clear trade-off between indicator ATC and LESP. Reducing the value of LESP will often increase the value of ATC; that is, a high-energy reliable system is more expensive than a low-demand one. From sub-figure (d), indicators LESP and CDE are also contradictory. Reducing the value of LESP will often increase CDE. In other words, a higher energy reliable system will emit more CO<sub>2</sub>. If the desirable level for LESP and CDE are defined, we can find a lower cost for a better solution with the PICEA-g approach.

Among the obtained Pareto optimal solutions, the decision-maker can further introduce their preference so as to select the preferred one for implementation. For example, three solutions from the Pareto set are selected according to the desired LESP less than 0.1%, and the satisfactory configurations of the RECCHP system are shown in Table 5.

- A reliable RECCHP system should have a low LESP value, which is preferably 0. Three solutions with LESP less than 0.1% for the FEL and FTL strategies are shown in Table 5.
- Furthermore, if the decision-maker is more concerned about the system cost, the solution with the smallest ATC should be chosen. Likewise, solutions with the minimum CDE are more likely to be selected if the fuel usage and CO<sub>2</sub> emission are considered as more important for the decision-maker.

Table 5 presents the final optimal configurations of the RECCHP under the FEL and FTL strategies. It is found that the optimal system configurations for the two operation strategies are greatly different—for example, solution 1 in both FEL and FTL (marked as bold in Table 5). For FEL, 10 solar panels, 59 degree tilt angle for PV panels, 19 wind turbines, 29 m height for wind tower, 650 kW·h for the capacity of PGU, 145 kW·h for the capacity of battery, 2 kW·h for the capacity of heat storage tank, causing 1.55 (10<sup>5</sup>) CNY for annual total cost, 0% for LESP, and 4.49 (10<sup>5</sup>) kg, are the best components of RECCHP system in terms of decreasing cost. For FTL, 20 solar panels, 59 degree tilt angle for PV panels, 16 wind turbines, 25 m height for wind tower, 489.7 kW·h for the capacity of PGU, 0.2 kW·h for the capacity of battery, 439.5 kW·h for the capacity of the heat storage tank, causing 1.35 (10<sup>5</sup>) CNY for annual total cost, 0% for LESP, and 3.83 (10<sup>5</sup>) kg, are the best components of the RECCHP system in terms of decreasing cost. To further illustrate the difference, configurations with the smallest ATC are used to simulate a one-year energy supply process of the RECCHP system. The results are shown in Figures 12 and 13.





**Figure 10.** RECCHP in FEL. ATC: annual total cost; CDE: carbon dioxide emission; LESP: loss of energy supply probability.

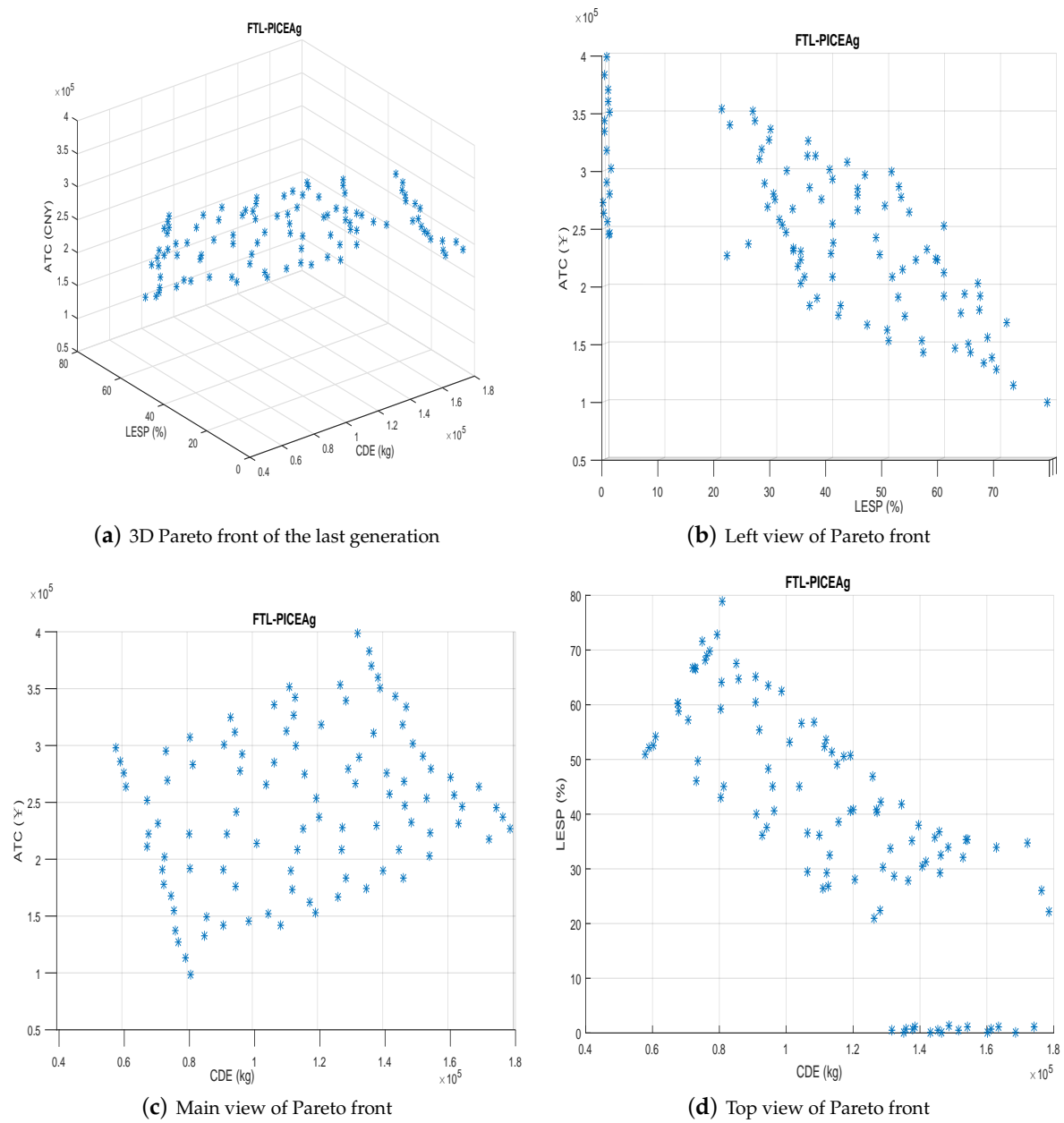
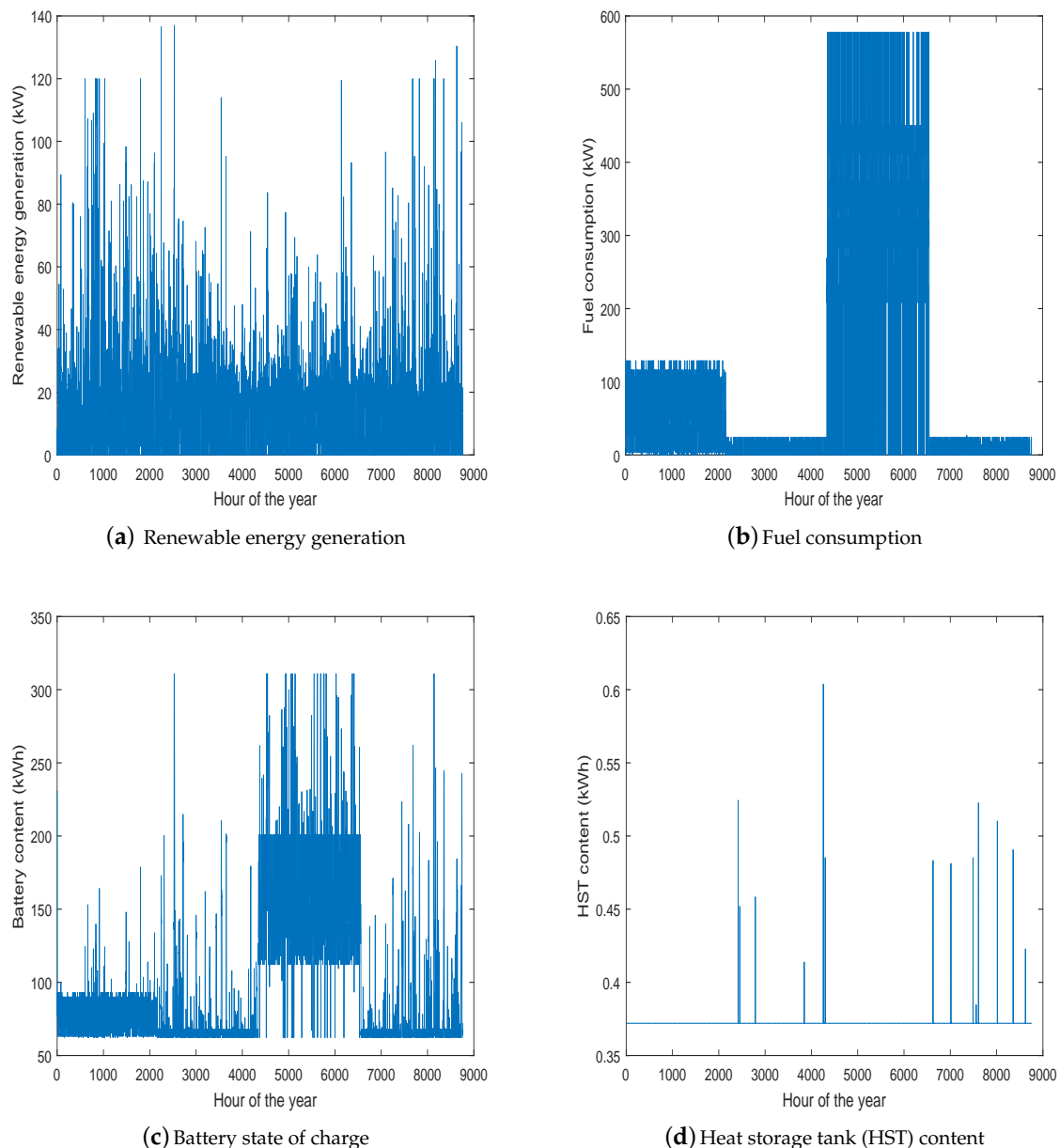


Figure 11. RECCHP in FTL.

Table 5. Selected results using PICEA-g with specified preference.

FEL										
Solution	$N_{pv}$	$\beta(^{\circ})$	$N_{wt}$	$H_{wt}$ (m)	$C_{max}^{PGU}$ (kW·h)	$C_{max}^{BAT}$ (kW·h)	$C_{max}^{HST}$ (kW·h)	ATC (CNY)	LESP(%)	CDE (kg)
1 (ATC.opt)	19	59	19	29	650	145	2	$1.55 (10^5)$	0	$4.49 (10^5)$
2	20	40	13	23	612	274.5	2	$1.62 (10^5)$	0	$3.89 (10^5)$
3	19	48	12	18	620	311	1.9	$1.68 (10^5)$	0	$3.77 (10^5)$
FTL										
1 (ATC.opt)	20	59	16	25	489.7	0.2	439.5	$1.35 (10^5)$	0	$3.83 (10^5)$
2	20	56	17	10	468.6	0	321	$1.43 (10^5)$	0.1	$3.43 (10^5)$
3	20	59	17	6	474.4	0.003	327	$1.46 (10^5)$	0.1	$3.34 (10^5)$

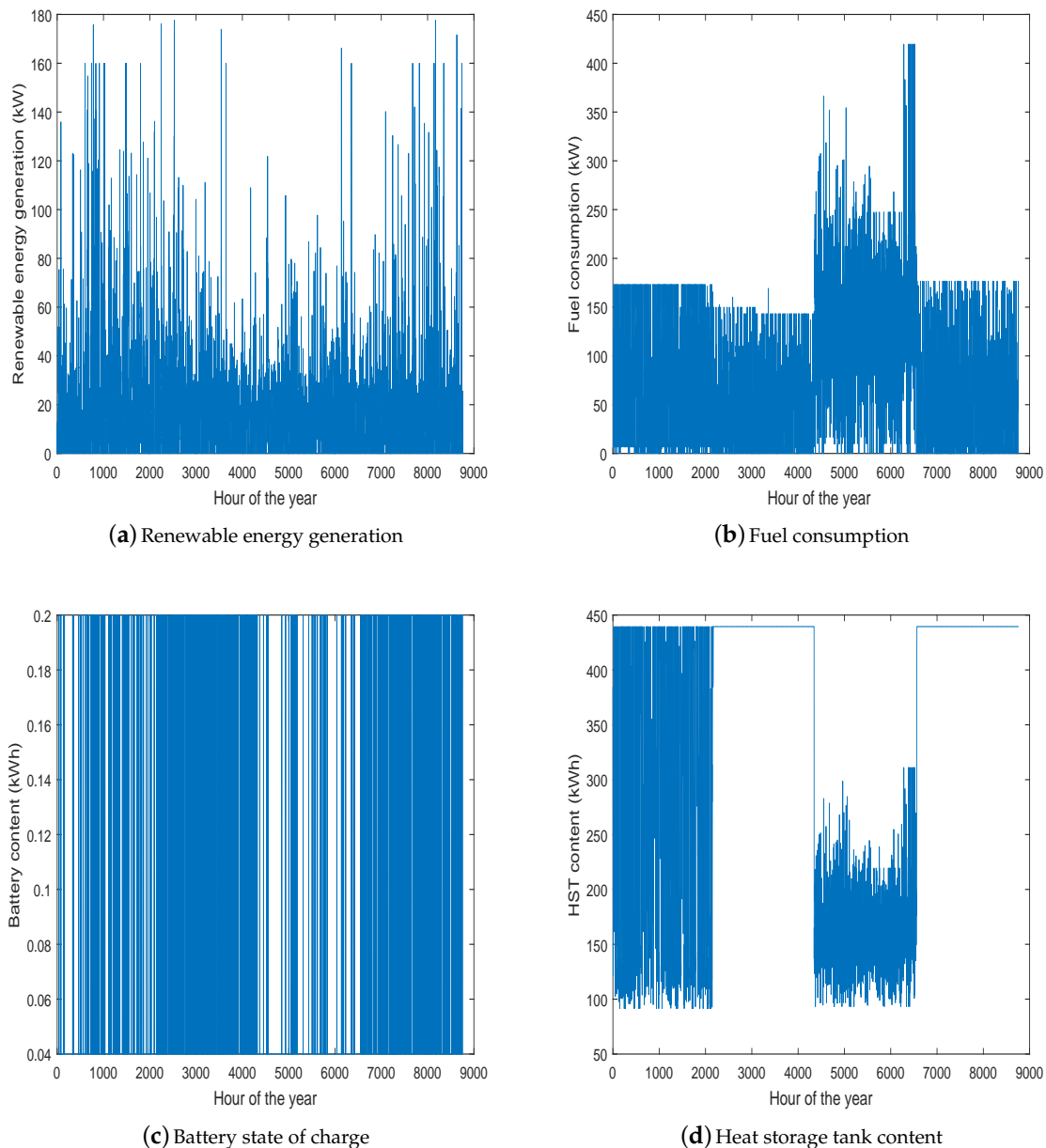


**Figure 12.** RECCHP in FEL.

It can be clearly seen from Figures 12 and 13 that in the simulation process, all the constraints of the system are satisfied. It can be observed that when the renewable energy generation is unable to meet the higher load demand, the storage system will first discharge until the maximum depth of discharge is reached, and then the PGU starts working to supply the deficit energy.

- In both FEL and FTL strategies, the fuel consumption is large in summer and small in other seasons. This might be caused by the reduction of renewable energy generation and the increase of the cold demand in summer, which can be observed from Figures 12a,b and 13a,b.
- Comparing the fuel consumption of PGU under FEL and FTL strategies, it is obvious that the fuel consumption in FEL is large in summer and winter while small in spring and autumn. In addition, the difference for FTL in different seasons is as evident as that for the FEL.
- Regarding the FEL strategy, we can observe from Figure 12c,d that the battery has a large capacity while the capacity of HST is small and sometimes even reaches 0.

- Regarding the FTL strategy, we can observe from Figure 13c,d that the capacity of the battery is small while HST has great capacity. Obviously, in spring and autumn, HST is only slightly used. The reason may be that the thermal demand in these seasons is pretty small, which can be directly met by renewable energy generation. Hence, some thermal energy generated from PGU may be wasted.



**Figure 13.** RECCHP in FTL.

The thermal demand in summer and winter is high. The FTL aims to meet the thermal demand as much as possible. Excess electricity generated from the PGU is stored into batteries which can then be used as needed, improving the system performance even further. The FEL aims to meet the electrical demand as much as possible. This strategy is shown as suitable for spring and autumn. In these seasons, the thermal demand is relatively low, which then can be easily met by the recovery thermal energy from the PGU. Using the FEL strategy, in the course of its operation for one year,

renewable energy generation is  $1.67 \times 10^5$  kW·h, which is equivalent to saving  $5.5 \times 10^4$  kg of LNG. LNG consumption of the RECCHP system is  $2.33 \times 10^5$  kg, while traditional energy systems need to consume  $4.63 \times 10^5$  kg of LNG. It can be seen that using the RECCHP system reduces the LNG consumption and CO<sub>2</sub> emissions by 50%. Besides, the annual total cost (ATC) of the RECCHP system is  $1.55 \times 10^5$  CNY, while it is  $3.03 \times 10^5$  CNY for traditional energy systems; thus, the RECCHP system has a better economic performance. This is mainly due to the savings in fuel costs. With the increase in fuel prices, the economic advantages of the RECCHP system will be more pronounced. When working in the FTL strategy, the total renewable energy generation is  $1.51 \times 10^5$  kW·h, which is equivalent to saving  $5.0 \times 10^4$  kg of LNG. The LNG consumption of the RECCHP system is  $2.05 \times 10^5$  kg, which means that using the RECCHP system reduces the LNG consumption and CO<sub>2</sub> emissions by 55%. Similarly, the RECCHP system has good economic performance under the FTL strategy because of the reduction of fuel usage.

## 5. Conclusions

The combined cooling, heating, and power (CCHP) system has been widely used due to its high efficiency in terms of energy usage. This research studied optimal configurations of renewable energies integrated CCHP systems in isolated mode. A multi-objective optimization model aimed at the minimization of system cost, loss of energy supply, and carbon emission is constructed. It is solved by the multi-objective evolutionary algorithm, PICEA-g, obtaining a set of Pareto optimal solutions (optimal system configurations). These solutions represent different trade-offs among the three objectives. Lastly, the most satisfactory solution is finalized by introducing the decision-maker preference. In addition, it is found that the optimal system configurations vary greatly under FEL and FTL strategies. The FEL strategy is more suitable for spring and autumn, while the FTL strategy is more suitable for winter and summer. It can be seen that RECCHP system has better economic and environmental advantages. More specifically, compared to traditional energy systems, using the RECCHP system reduces the LNG consumption and CO<sub>2</sub> emissions by 50% and 55% in FEL and FTL, respectively. At the same time, the ATC of the RECCHP system is lower.

In terms of future studies, first we would like to explore day-ahead optimal scheduling of CCHP systems. Second, an adaptive selection of operation strategies would be quite useful, which deserves further study. Lastly, more effective algorithms (i.e., dealing with mixed categorical and real decision variables) will be investigated.

**Acknowledgments:** This work was supported by the National Natural Science Foundation of China (Nos. 61773390, 71571187) and Natural Science Fund for Distinguished Young Scholars of Hunan Province (2017JJ1001).

**Author Contributions:** Guozheng Li and Rui Wang proposed the idea, wrote the paper, conceived and designed the experiments; Tao Zhang analyzed the data; Mengjun Ming performed the experiments.

**Conflicts of Interest:** The authors declare no conflict of interest.

## Abbreviations

ATC	annual total cost
CCHP	combined cooling, heating, and power
CDE	carbon dioxide emission
CRF	capital recovery factor
DC	discriminant condition
FF	fill factor
HST	heat storage tank
MOEA	multi-objective evolutionary algorithm
NCOT	nominal cell operating temperature
PGU	power generation unit
RECCHP	renewable energies integrated CCHP
LESP	loss of energy supply probability

LNG	liquid natural gas
SOC	battery state of charge
<b>Superscripts</b>	
BAT	battery
CCHP	combined cooling, heating, and power
FEL	following electric load
FTL	following the thermal load
R	the remaining user load after renewable energies supply
REE	renewable energies
S	storage devices
HST	heat storage tank
STC	standard test condition
<b>Subscripts</b>	
ac	absorption chiller
bat	battery
c	cool
cap	capital
CO <sub>2</sub>	carbon dioxide
cl	cold load
ch	charge
dis	discharge
e	electricity
eb	electric boiler
ec	electric chiller
el	electrical load
h	heat
hc	heating coil
hl	heat load
in	input
max	maximum
min	minimum
oc	open-circuit
out	output
pgu	power generation unit
pv	photovoltaic
r	waste heat recovery system
rep	replace
sc	short-circuit
st	heat storage tank
tow	wind turbine tower
wt	wind turbine
<b>Symbols</b>	
C	cost
Cap	capital
COP	coefficient of performance
E	electric power
F	fuel
I	current
Q	thermal power
U	operation status of battery
V	operation status of heat storage tank/voltage
$\eta$	energy efficiency

## References

1. Liu, M.X.; Shi, Y.; Fang, F. Combined cooling, heating and power systems: A survey. *Renew. Sustain. Energy Rev.* **2014**, *35*, 1–22.
2. Gu, W.; Wu, Z.; Bo, R.; Liu, W.; Zhou, G.; Chen, W.; Wu, Z.J. Modeling, planning and optimal energy management of combined cooling, heating and power microgrid: A review. *Int. J. Electr. Power Energy Syst.* **2014**, *54*, 26–37.
3. Cho, H.; Smith, A.D.; Mago, P. Combined cooling, heating and power: A review of performance improvement and optimization. *Appl. Energy* **2014**, *136*, 168–185.
4. Cho, H.; Mago, P.J.; Luck, R.; Chamra, L.M. Evaluation of CCHP systems performance based on operational cost, primary energy consumption, and carbon dioxide emission by utilizing an optimal operation scheme. *Appl. Energy* **2009**, *86*, 2540–2549.
5. Wang, H.; Yin, W.; Abdollahi, E.; Lahdelma, R.; Jiao, W. Modelling and optimization of CHP based district heating system with renewable energy production and energy storage. *Appl. Energy* **2015**, *159*, 401–421.
6. Wang, L.; Singh, C. Stochastic combined heat and power dispatch based on multi-objective particle swarm optimization. *Int. J. Electr. Power Energy Syst.* **2008**, *30*, 226–234.
7. Cho, H.; Luck, R.; Eksioğlu, S.D.; Chamra, L.M. Cost-optimized real-time operation of CHP systems. *Energy Build.* **2009**, *41*, 445–451.
8. Sadat Hosseini, S.S.; Jafarnejad, A.; Behrooz, A.H.; Gandomi, A.H. Combined heat and power economic dispatch by mesh adaptive direct search algorithm. *Expert Syst. Appl.* **2011**, *38*, 6556–6564.
9. Sevenscan, S.; Lindbergh, G.; Lagergren, C.; Alvfors, P. Economic feasibility study of a fuel cell-based combined cooling, heating and power system for a data centre. *Energy Build.* **2016**, *111*, 218–223.
10. Xu, Y.; Li, W.; Yuan, J.; Sciubba, E. Economical Efficiency of Combined Cooling Heating and Power Systems Based on an Enthalpy Method. *Energies* **2017**, *10*, 1821.
11. Mago, P.J.; Chamra, L.M. Analysis and optimization of CCHP systems based on energy, economical, and environmental considerations. *Energy Build.* **2009**, *41*, 1099–1106.
12. Wu, J.; Wang, J.; Li, S. Multi-objective optimal operation strategy study of micro-CCHP system. *Energy* **2012**, *48*, 472–483.
13. Xu, D.; Qu, M. Energy, environmental, and economic evaluation of a CCHP system for a data center based on operational data. *Energy Build.* **2013**, *67*, 176–186.
14. Wei, D.J.; Chen, A.; Sun, B.; Zhang, C.H. Multi-objective optimal operation and energy coupling analysis of combined cooling and heating system. *Energy* **2016**, *98*, 296–307.
15. Yousefi, H.; Ghodusinejad, M.H.; Noorollahi, Y. GA/AHP-based optimal design of a hybrid CCHP system considering economy, energy and emission. *Energy Build.* **2017**, *138*, 309–317.
16. Lahdelma, R.; Hakonen, H. An efficient linear programming algorithm for combined heat and power production. *Eur. J. Oper. Res.* **2003**, *148*, 141–151.
17. Rong, A.; Hakonen, H.; Lahdelma, R. An efficient linear model and optimisation algorithm for multi-site combined heat and power production. *Eur. J. Oper. Res.* **2006**, *168*, 612–632.
18. Rong, A.; Lahdelma, R. An effective heuristic for combined heat-and-power production planning with power ramp constraints. *Appl. Energy* **2007**, *84*, 307–325.
19. Hussain, A.; Bui, V.H.; Kim, H.M.; Im, Y.H.; Lee, J.Y. Optimal Energy Management of Combined Cooling, Heat and Power in Different Demand Type Buildings Considering Seasonal Demand Variations. *Energies* **2017**, *10*, 789.
20. Qin, C.; Tang, J.; Zhang, Y. An efficient algorithm for CCHP system sizing and an operational optimization model based on LP. *J. Nat. Gas Sci. Eng.* **2015**, *25*, 189–196.
21. Li, G.Q.; Zhang, R.F.; Jiang, T.; Chen, H.H.; Bai, L.Q.; Cui, H.T.; Li, X.J. Optimal dispatch strategy for integrated energy systems with CCHP and wind power. *Appl. Energy* **2017**, *192*, 408–419.
22. Carvalho, M.; Serra, L.M.; Lozano, M.A. Optimal synthesis of trigeneration systems subject to environmental constraints. *Energy* **2011**, *36*, 3779–3790.
23. Lozano, M.A.; Ramos, J.C.; Serra, L.M. Cost optimization of the design of CHCP (combined heat, cooling and power) systems under legal constraints. *Energy* **2010**, *35*, 794–805.
24. Gopisetty, S.; Treffinger, P. Generic Combined Heat and Power (CHP) Model for the Concept Phase of Energy Planning Process. *Energies* **2016**, *10*, 11.



25. Wang, J.J.; Zhai, Z.Q.; Jing, Y.Y.; Zhang, C.F. Particle swarm optimization for redundant building cooling heating and power system. *Appl. Energy* **2010**, *87*, 3668–3679.
26. Fu, X.; Huang, S.; Li, R.; Sun, H. Electric Power Output Optimization for CCHP Using PSO Theory. *Energy Procedia* **2016**, *103*, 9–14.
27. Subbaraj, P.; Rengaraj, R.; Salivahanan, S. Enhancement of combined heat and power economic dispatch using self adaptive real-coded genetic algorithm. *Appl. Energy* **2009**, *86*, 915–921.
28. Wang, J.J.; Jing, Y.Y.; Zhang, C.F. Optimization of capacity and operation for CCHP system by genetic algorithm. *Appl. Energy* **2010**, *87*, 1325–1335.
29. Li, M.; Mu, H.; Li, H. Analysis and Assessments of Combined Cooling, Heating and Power Systems in Various Operation Modes for a Building in China, Dalian. *Energies* **2013**, *6*, 2446–2467.
30. Gimelli, A.; Muccillo, M. Optimization criteria for cogeneration systems: Multi-objective approach and application in an hospital facility. *Appl. Energy* **2013**, *104*, 910–923.
31. Muccillo, M.; Gimelli, A.; Sannino, R. Multi-objective Optimization and Sensitivity Analysis of a Cogeneration System for a Hospital Facility. *Energy Procedia* **2015**, *81*, 585–596.
32. Alvarado, D.C.; Acha, S.; Shah, N.; Markides, C.N. A Technology Selection and Operation (TSO) optimisation model for distributed energy systems: Mathematical formulation and case study. *Appl. Energy* **2016**, *180*, 491–503.
33. Wang, F.; Zhou, L.; Ren, H.; Liu, X. Search Improvement Process-Chaotic Optimization-Particle Swarm Optimization-Elite Retention Strategy and Improved Combined Cooling-Heating-Power Strategy Based Two-Time Scale Multi-Objective Optimization Model for Stand-Alone Microgrid Operation. *Energies* **2017**, *10*, 1936.
34. Gimelli, A.; Muccillo, M.; Sannino, R. Optimal design of modular cogeneration plants for hospital facilities and robustness evaluation of the results. *Energy Convers. Manag.* **2017**, *134*, 20–31.
35. Soheyli, S.; Mayam, M.H.S.; Mehrjoo, M. Modeling a novel CCHP system including solar and wind renewable energy resources and sizing by a CC-MOPSO algorithm. *Appl. Energy* **2016**, *184*, 375–395.
36. Wu, F.; Guo, Q.; Sun, H.; Pan, Z. Research on the optimization of combined heat and power microgrids with renewable energy. In Proceedings of the 2014 IEEE PES Asia-Pacific Power and Energy Engineering Conference (APPEEC), Hong Kong, China, 7–10 December 2014; IEEE: New York, NY, USA, 2014; pp. 1–5.
37. Arsalis, A.; Alexandrou, A.N.; Georghiou, G.E. Thermo-economic Modeling and Parametric Study of a Photovoltaic-Assisted 1 MWe Combined Cooling, Heating, and Power System. *Energies* **2016**, *9*, 663.
38. Marrasso, E.; Sasso, M.; Tariello, F. Analysis of a Hybrid Solar-Assisted Trigeration System. *Energies* **2016**, *9*, 705.
39. Bellos, E.; Tzivanidis, C. Optimization of a Solar-Driven Trigeration System with Nanofluid-Based Parabolic Trough Collectors. *Energies* **2017**, *10*, 848.
40. Acevedo, L.; Uche, J.; Almo, A.D.; Círez, F.; Usón, S.; Martínez, A.; Guedea, I. Dynamic Simulation of a Trigeration Scheme for Domestic Purposes Based on Hybrid Techniques. *Energies* **2016**, *9*, 1013.
41. Kang, E.C.; Lee, E.J.; Ghorab, M.; Yang, L.; Entchev, E.; Lee, K.S.; Lyu, N.J. Investigation of Energy and Environmental Potentials of a Renewable Trigeration System in a Residential Application. *Energies* **2016**, *9*, 760.
42. Rey, G.; Ulloa, C.; Míguez, J.L.; Cacabelos, A. Suitability Assessment of an ICE-Based Micro-CCHP Unit in Different Spanish Climatic Zones: Application of an Experimental Model in Transient Simulation. *Energies* **2016**, *9*, 969.
43. Wang, J.J.; Zhang, C.F.; Jing, Y.Y. Multi-criteria analysis of combined cooling, heating and power systems in different climate zones in China. *Appl. Energy* **2010**, *87*, 1247–1259.
44. Jing, Y.Y.; Bai, H.; Wang, J.J.; Liu, L. Life cycle assessment of a solar combined cooling heating and power system in different operation strategies. *Appl. Energy* **2012**, *92*, 843–853.
45. Wang, J.J.; Yang, Y.; Mao, T.Z.; Sui, J.; Jin, H.G. Life cycle assessment (LCA) optimization of solar-assisted hybrid CCHP system. *Appl. Energy* **2015**, *146*, 38–52.
46. Wang, R.; Purshouse, R.C.; Fleming, P.J. Preference-inspired Co-evolutionary Algorithms for Many-objective Optimisation. *IEEE Trans. Evol. Comput.* **2013**, *17*, 474–494.
47. Barbieri, E.S.; Melino, F.; Morini, M. Influence of the thermal energy storage on the profitability of micro-CHP systems for residential building applications. *Appl. Energy* **2012**, *97*, 714–722.

48. Ming, M.; Wang, R.; Zha, Y.; Zhang, T. Multi-Objective Optimization of Hybrid Renewable Energy System Using an Enhanced Multi-Objective Evolutionary Algorithm. *Energies* **2017**, *10*, 674.
49. Abedi, S.; Alimardani, A.; Gharehpetian, G.B.; Riahy, G.H.; Hosseini, S.H. A comprehensive method for optimal power management and design of hybrid RES-based autonomous energy systems. *Renew. Sustain. Energy Rev.* **2012**, *16*, 1577–1587.
50. Shi, Z.; Wang, R.; Zhang, T. Multi-objective optimal design of hybrid renewable energy systems using preference-inspired coevolutionary approach. *Sol. Energy* **2015**, *118*, 96–106.
51. Koutroulis, E.; Kolokotsa, D.; Potirakis, A.; Kalaitzakis, K. Methodology for optimal sizing of stand-alone photovoltaic/wind-generator systems using genetic algorithms. *Sol. Energy* **2006**, *80*, 1072–1088.
52. Yang, H.; Lu, L.; Zhou, W. A novel optimization sizing model for hybrid solar-wind power generation system. *Sol. Energy* **2007**, *81*, 76–84.
53. Wang, R.; Xiong, J.; Ishibuchi, H.; Wu, G.; Zhang, T. On the effect of reference point in MOEA/D for multi-objective optimization. *Appl. Soft Comput.* **2016**, in press.
54. Wang, R.; Zhou, Z.; Liao, T.; Zhang, T. Localized weighted sum method for many-objective optimization. *IEEE Trans. Evol. Comput.* **2016**, *22*, 3–18.
55. Wang, R.; Zhang, Q.; Zhang, T. Decomposition based algorithms using Pareto adaptive scalarizing methods. *IEEE Trans. Evol. Comput.* **2016**, *20*, 821–837.
56. Lei, H.; Wang, R.; Laporte, G. Solving a multi-objective dynamic stochastic districting and routing problem with a co-evolutionary algorithm. *Comput. Oper. Res.* **2016**, *67*, 12–24.
57. Lei, H.; Wang, R.; Zhang, T.; Liu, Y.; Zha, Y. A multi-objective co-evolutionary algorithm for energy-efficient scheduling on a green data center. *Comput. Oper. Res.* **2016**, *75*, 103–117.
58. Wang, R.; Purshouse, R.C.; Fleming, P.J. Preference-inspired co-evolutionary algorithms using weight vectors. *Eur. J. Oper. Res.* **2015**, *243*, 423–441.
59. Wang, R.; Purshouse, R.C.; Giagkiozis, I.; Fleming, P.J. The iPICEA-g: A new hybrid evolutionary multi-criteria decision making approach using the brushing technique. *Eur. J. Oper. Res.* **2015**, *243*, 442–453.
60. Cozzolino, R. Thermodynamic Performance Assessment of a Novel Micro-CCHP System Based on a Low Temperature PEMFC Power Unit and a Half-Effect Li/Br Absorption Chiller. *Energies* **2018**, *11*, 315.
61. Li, M.; Mu, H.; Li, N.; Ma, B. Optimal design and operation strategy for integrated evaluation of CCHP (combined cooling heating and power) system. *Energy* **2016**, *99*, 202–220.
62. Fang, F.; Wang, Q.H.; Shi, Y. A Novel Optimal Operational Strategy for the CCHP System Based on Two Operating Modes. *IEEE Trans. Power Syst.* **2012**, *27*, 1032–1041.



© 2018 by the authors. Licensee MDPI, Basel, Switzerland. This article is an open access article distributed under the terms and conditions of the Creative Commons Attribution (CC BY) license (<http://creativecommons.org/licenses/by/4.0/>).