

Sea-Water Desalination for Load Levelling of Gen-Sets in Small Off-Grid Islands

Authors:

Alessandro Corsini, Eileen Tortora

Date Submitted: 2018-09-21

Keywords: desalination, Renewable Energy, diesel engine, island, water-energy nexus

Abstract:

This study deals with the energy/water nexus on small off-grid islands. Small islands share several characteristics that hinder the introduction of new plants, such as: Energy system balance when renewable sources are introduced; water shortages, usually addressed via shipping from the mainland; environmental and historical heritage values; and, scarce land availability. In these cases, it is mandatory to detect energy/water technology integration and management solutions respecting the peculiarities and boundaries of the sites. The present work proposes a desalination plant with a primary scope of load leveler and a secondary scope of water producer. The aim is to propose a simple and non-invasive solution for energy/water management in order to limit impacts on the local environment while improving the match between renewable energy and local generation by means of desalination. This study led to an integrated system composed of local diesel engine power plant, distributed roof-top photovoltaic plants and a desalination plant, managed by a dedicated control logic. Desalination from renewable energy and power adjustments of already active diesel engines are favored. The case study refers to Ponza island, in the Tyrrhenian Sea. This paper demonstrates the effective possibility of using a desalination plant with the double purpose of water production and load levelling, providing 98% of the local water demand while mitigating the renewable energy fluctuations effects on the gen-set. Moreover, the proposed system results in a 50% CO₂eq emissions abatement over the current water supply carbon footprint.

Record Type: Published Article

Submitted To: LAPSE (Living Archive for Process Systems Engineering)

Citation (overall record, always the latest version):

LAPSE:2018.0590

Citation (this specific file, latest version):

LAPSE:2018.0590-1

Citation (this specific file, this version):

LAPSE:2018.0590-1v1

DOI of Published Version: <https://doi.org/10.3390/en11082068>

License: Creative Commons Attribution 4.0 International (CC BY 4.0)

Article

Sea-Water Desalination for Load Levelling of Gen-Sets in Small Off-Grid Islands

Alessandro Corsini ¹  and Eileen Tortora ^{2,*}

¹ Department of Mechanical and Aerospace Engineering, Sapienza Università di Roma, via Eudossiana 18, 00184 Roma, Italy; alessandro.corsini@uniroma1.it

² Faculty of Civil and Industrial Engineering, Sapienza Università di Roma, via Andrea Doria 3, 04100 Latina, Italy

* Correspondence: eileen.tortora@uniroma1.it; Tel.: +39-077-347-6521

Received: 20 June 2018; Accepted: 2 August 2018; Published: 8 August 2018



Abstract: This study deals with the energy/water nexus on small off-grid islands. Small islands share several characteristics that hinder the introduction of new plants, such as: Energy system balance when renewable sources are introduced; water shortages, usually addressed via shipping from the mainland; environmental and historical heritage values; and, scarce land availability. In these cases, it is mandatory to detect energy/water technology integration and management solutions respecting the peculiarities and boundaries of the sites. The present work proposes a desalination plant with a primary scope of load leveler and a secondary scope of water producer. The aim is to propose a simple and non-invasive solution for energy/water management in order to limit impacts on the local environment while improving the match between renewable energy and local generation by means of desalination. This study led to an integrated system composed of local diesel engine power plant, distributed roof-top photovoltaic plants and a desalination plant, managed by a dedicated control logic. Desalination from renewable energy and power adjustments of already active diesel engines are favored. The case study refers to Ponza island, in the Tyrrhenian Sea. This paper demonstrates the effective possibility of using a desalination plant with the double purpose of water production and load levelling, providing 98% of the local water demand while mitigating the renewable energy fluctuations effects on the gen-set. Moreover, the proposed system results in a 50% CO_{2eq} emissions abatement over the current water supply carbon footprint.

Keywords: water-energy nexus; island; diesel engine; renewable energy; desalination

1. Introduction

Although small islands' energy and water supply problems and solutions have been studied for a long time, high costs are still experienced. A levelized cost of energy of EUR 0.38/kWh [1], in some cases exceeding EUR 0.70/kWh [2], and water costs of over EUR 11/m³ [3,4] are related to the usual dependency of the shipping-fuel and water restock. Moreover, demand is often concentrated in the summer period due to island tourism vocation [3,5,6].

In the last decades, islands have been considered as the ideal test-bed for renewable energy penetration, with some successful results [7]. To mention just a few, Meschede et al. [8] classified 1087 islands using cluster analysis allowing the identification of similar islands, in order to foster proven and well-working concepts from one island to others with analogous characteristics. Blechinger et al. [9] assessed the renewable energy source (RES) potential of 1800 small islands, conducing to the estimation of almost 7.5 GW of photovoltaic power and 14 GW of wind power, and a potential greenhouse gas emissions and fuel consumption abatement of approximately 50%. Gils et al. [10] analyzed the scenario pathway to a 100% RES supply in the Canary Islands by 2050. The study highlighted the need to

extend electric energy use to the mobility, heating and hydrogen production in order to support the integration of a large share of intermittent renewable power generation. Maizi et al. [11] discussed a methodology to forecast the reliability and robustness of an island power grid for a large share of intermittent sources, which jeopardize the consistency of the power supply, aiming at 100% RES penetration. Other works deal with more technological aspects, proposing different power generation schemes, energy storage and managements solutions, as reviewed by Kuang et al. [12].

Despite the amount of theoretical studies and several international initiatives [13,14], renewable energy penetration is still restricted. Currently, only twenty islands are in transition toward 100% renewable energy, with ten islands having already reached the goal [15]. In view of the emission limits defined by the European Industrial Emissions Directive for islands prior to 31 December 2019, the use of RES represents a real opportunity to advance energy transition, especially when most European islands are expecting increases in electricity demand, with an average increase of 24% from 2009 to 2020 (note that the EU-27 increase is expected to be 14%) [16]. The barriers to fossil-fuel free stand-alone grids lie in the difficulty of managing a highly fluctuating RES power supply, with the risk of worsening the performance of the local diesel generators (also called gen-sets), typically operated at part-load. Moreover, most of the proposed actions to tackle island energy related problems deal with RES in combination with energy storage [15–17]. Nevertheless, the introduction of storage technologies on islands is demanding, mainly because of the significant cost and interoperability difficulties [18,19]. Notably, in contexts like the Greek Aegean Islands or Italian minor islands, RES and energy storage technologies introduction is additionally hindered [15,18–20], due to severe environmental restrictions (i.e., the European Directive 2009/147 limits wind generator installation as it represents a disturbing element for bird life and migratory fluxes). The result is a low RES share, which amounts to only 1048 kW photovoltaic (PV) power and 36.85 kW wind power in the 19 Italian small islands, in spite of an overall population of 42,568 inhabitants [15].

In this context, a desalination plant represents a relevant additional energy use (generally 4–6 kWh/m³ for sea water reverse osmosis desalination) for the generally weak islands' energy system. Aiming at security and reliability of the power supply, small islands' green energy transition necessarily has to go through an intermediate phase, in which it is mandatory to sift new approaches to system integration among local gen-sets, renewable sources, storage and water desalination.

The relationship between energy and water has drawn great attention in recent years, aiming at better supporting planning and understanding of potentials, both of policies and technologies [21]. Several studies have tried to couple energy and water problems of islands: (i) aiming at fully renewable energy desalination systems as reviewed in [22–24], or (ii) studying energy/water integrated systems, in which surplus renewable energy with respect to the local load is used for desalination purposes [5]. Suitability of desalination to overcome water shortage problems has already been demonstrated in several applications [3,25], allowing water supply costs to drop (i.e., to less than EUR 4/m³ in the Aegean Archipelago with RES energy feeding [3]). In [26] a nexus framework for energy and water in islands is presented, outlining a roadmap from “full input of energy and water” through “semi-input of energy and water” to “zero input of energy and water”, which leads an island's energy and water resources to become gradually independent from the mainland.

The integration of desalination systems usually follows two main approaches: Systems driven either by energy availability or by water production objectives.

Energy availability driven systems are autonomous fully dedicated renewable desalination systems. Aiming at fulfilling water needs, the desalination section should be over-sized in order to absorb most of the renewable power peaks, overcoming low intensity and intermittence of RES [27]. It requires energy storage and a complex design, entailing siting and spacing issues [28]. This case represents a one-way storage, in which the energy is stored as drinkable water [5]. With the appropriate technologies, this approach may lead to two-way storage, in which the desalination plant would import the renewable electric energy needed for the operation but also would act as a storage device and export electricity to the grid acting like a virtual battery [29]. Although on average, renewable energy helps

to lower water production costs both in RES and diesel-RES configurations [30], literature presents cases, such as [31], in which a reverse osmosis (RO) desalination plant solely relying on renewable energy led to a higher water production cost than an equivalent hybrid system using RES and diesel engines (DEGS) (i.e., 2.4 USD/m³ vs. 1.8 USD/m³). Moreover, the most current information on desalination shows that use of renewable energy for desalination has increased from 2% in 1998 to 23% in 2016 [32,33], but only 1% of the global desalination capacity is based on energy from renewable sources [34], demonstrating the strong need for further work in order to assess integration possibilities of desalination and renewable energy plants, and to promote their development.

In water goal driven systems, desalination constantly represents an additional load, usually connected to the local energy grid, fed by a mix of renewable energy, fossil fuel energy and energy storage technologies [3,5]. These systems have higher renewable energy penetration and lower water production costs with respect to the fully autonomous desalination plants [28]. However, new dedicated and complex management systems are needed in order to improve the system stability [35]. In fact, as RES power fluctuations produce modifications of the load curve shape, causing sudden load power drops, diesel generators constrain RES utilization, being unable to lower their output below the minimum load settings predetermined to ensure engine efficiency and preserve engine condition. Thus, during RES energy generation, diesel load set points may produce surplus generation, which must be absorbed via regulating devices such as dump loads or energy storage systems [36]. Moreover, low-load operation results in poor fuel efficiency and increased operation and maintenance cost due to incomplete combustion of fuel during light loads [37]. The result is a system of increased complexity, expense and waste. Regardless of approach, it is not currently feasible to totally eliminate diesel generation within a hybrid power system. Instead, optimal or minimal diesel usage is targeted.

Thus, energy availability driven system appears to be more sustainable but need higher investments in renewable and storage technologies to achieve an affordable water production; on the contrary, water goal driven systems are affordable but impact the system stability and fuel consumption, which is generally making them less environment friendly.

The novelty of the present study precisely relies on the desalination integration approach, with the aim of overcoming the over-sizing and affordability problems of the energy availability driven desalination systems and the stability and fuel consumption issues of the water goal driven desalination systems. Desalination here is mostly driven by the necessity to mitigate the RES fluctuation effects on the local generators' power set-points, activating it when the gen-set performance is beneath a fixed threshold, while assuring the needed water supply.

The desalination integration environment considered in the study is an island energy system based on both renewable and fossil fuel energy. As already stated, energy storage requires too bulky and costly equipment [38] and will not be taken into account.

This study was based on the development of three models of an island energy/water system, with increased complexity, and analyzed by means of the results of hourly transient simulations over a one-year period. A dedicated control logic was developed for the integrated water/energy system management. The desalination plant acquires a twofold role of deferrable energy load and energy storage, depending on the energy plant site working conditions. The study demonstrates the capability of a simple desalination plant integrated in the local power system and operated with a proper control logic, to mitigate the negative effects of the RES fluctuations on the diesel engine generator set (DEGS) while simultaneously producing the needed water supply.

2. Case Study Description

The case study is the island of Ponza, in the Pontinian Archipelago, Tyrrhenian Sea, with a surface area of 7.5 km². The number of inhabitants is remarkably dependent on its touristic vocation, and can range from 4000 in winter to about 55,000 in summer. This circumstance leads to severe issues energy and water system management. Electric energy is supplied by two diesel engine (DEGS) power

station. Respectively, a main power station of 6.2 MW with four engines, and a peak shaving station with installed power 2.6 MW and two engines, typically operated in summer [39]. The yearly energy demand was approximately 11 GWh/year for 2012 (Table 1), with a maximum power demand peak of about 5 MW in the summer period. In winter, demand amounts to 1–2.5 MW [39]. The climate is typical of that of Mediterranean areas, with mild winters and hot summers. Figure 1 shows solar radiation data for Ponza Island, with the average radiation on horizontal plane varying from 1700 Wh/m²/day in December, to 7800 Wh/m²/day in July [40]. Land availability and environmental regulations (i.e., European Council Directive 79/409 on wild bird migratory paths), then, are factors limiting the possibility of dedicated renewable technology installations. To this end, besides energy efficiency and photovoltaic technologies, previous studies assessed the wave-energy potential, both for on-shore [41,42] and near shore devices [43].

Table 1. Monthly distribution of energy and water needs of Ponza Island.

Month	Energy Load, Year 2012 (MWh/Month) [39]	Fresh Water Need, Year 2015 (10 ³ m ³ /Month) [44]	Water Transportation Emissions (tCO _{2eq}) [43]
1	694	17	116
2	679	17	116
3	663	17	116
4	712	22	150
5	739	38	259
6	1088	45	307
7	1416	70	478
8	1738	75	512
9	961	45	307
10	643	20	136
11	600	17	116
12	706	17	116
Total	10,639	400	2729

From the water point of view, Ponza is devoid of springs or wells and completely depends on mainland supply. Water demand varies from a 10–40 m³/h range in winter to peaks of 240 m³/h in summer. The global amount of water supply was 400,000 m³/year in 2015 (Table 1), with a monthly distribution varying in the 17–75 × 10³ m³/month range [44]. The water supply entails 237 water tank ship trips to bring water from the mainland, with associated emissions of approximately 2730 tCO_{2eq}/year. More details about the present water supply may be found in [43]. The water authority for Ponza island is developing a project for a desalination plant, constituted by three reverse osmosis units of globally 165 kW and 1500 m³/day fresh water production capacity. The desalination plant will be equipped with a dedicated power generation plant composed of two units of 275 kW diesel generators [44].

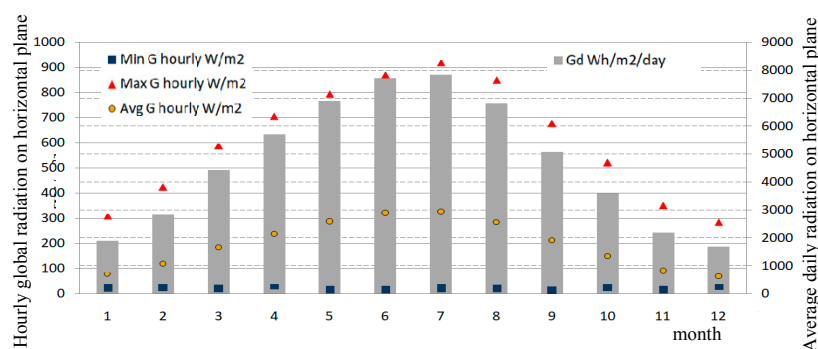


Figure 1. Minimum, maximum and average value for the hourly global radiation on horizontal plane (G—left axis) and average daily radiation on horizontal plane (Gd—right axis) [40].

Model Components Description and Data

The DEGS is modelled by six 1380 kW units of a CAT 3516 HD engine (Table 2), with a global power of 8.28 MW. In accordance with US Department of Energy–National Renewable Energy Laboratory (NREL) [45], it is not recommended for diesel gen-sets to be used under about 20–25% of their rated capacity, thus the minimum power ratio is set to 280 kW. The reference power is set to 600 kW. The engine efficiency is calculated as the ratio between the output power and the fuel power, which in turn depends on the fuel characteristics (density and low heating value) and the fuel consumption curve of the specific engine with respect to the power set point.

Table 2. Main technologies description.

Component	Characteristics	Size
DEGS	CAT 3516 HD, six units of 1380 kW _p	8.28 MW _p
PV	10,898 m ² of roofs 260 W _p and 15.8% efficiency panels	1.80 MW _p
Desalting station	8 units × 300 m ³ /d Feed flow 8 × 32 m ³ /h Permeate flow 8 × 12.5 m ³ /h Recovery 40% Global specific energy consumption 3.6 kWh/m ³	360 kW _p
Water storage	Existent tanks	3000 m ³

On the RES generation side, in order to perform a realistic simulation, taking into account environmental restrictions, land availability and economy, the integration of PV plants on private house rooftops has been considered [28]. By means of a geographic information system, an availability of 43,590 m² of plane rooftops was estimated, without obstructions that may cause shadows, excluding the historical center and the harbor of Ponza town. In the hypothesis of a 25% share of PV penetration with respect to the surface availability, the resulting global PV power amounts to 1.8 MW_p. The selected PV panel has 260 W peak power with a 15.8% efficiency in standard conditions. The working conditions hypotheses are: 20° tilt in order to limit visual impacts and 0° azimuth. As customary for rooftop PV plants, energy storage devices are not taken into account in the present work.

For the desalination plant, the RO desalination technology has been selected as the state-of-the-art for compact water production units [22]. The modelled system is aimed at completely satisfying the water demand, for which an hourly load curve has been reconstructed leading to a yearly water supply of 420 × 10³ m³/year. The desalination system size choice has been made trying to merge two essential but opposite aspects: A reduced number of units and a size able to be properly adapted to different values of power availability. The modelled plant will be composed by of eight 300 m³/day capacity units, a permeate flow of 12.5 m³/h/unit and 40% water recovery. The power consumption of the RO units, equipped with an energy recovery device, and considering the power request for sea-water draw, fresh water raise and brine rejection, amounts to about 360 kW, with a global specific energy consumption of 3.6 kWh/m³. The local water storage has a cumulative capacity of 3000 m³. The control logic of the water production is aimed at maintaining a 600 m³ level in the storage; i.e., two days autonomy in the winter period.

In order to calculate the equivalent CO₂ emissions for the proposed scenarios, the factor used is 3.282 kg_{CO2eq}/kg_{Diesel fuel} relative to a generic diesel generator for industry purposes [46].

3. Methodology

This study is based on the comparison of three scenarios with increasing complexity, describing the energy system in cooperation with the water desalination system. Figure 2 shows the model flowchart for the three proposed scenarios distinguished by different colors:

1. The Base Case (BC) (black section in Figure 2) models the present situation of the island and comprises the load, a power control and the gen-set. Energy and water supplies completely rely on shipping from the mainland. The power control is based on the power demand, defining the diesel engines' set points.
2. The Renewable energy Configuration (ReC) (green section in Figure 2) provides hints about the effect of the introduction of renewable energy into the small energy grid of the island. This scenario entails the addition of meteorological data and a conversion technology for renewable energy production. The power control is based on the comparison of the power demand with the renewable power availability, defining the diesel engines' set points. Water supply completely depends on the mainland.
3. Desalination/Renewable energy Configuration (DeReC) (blue section in Figure 2), in which a desalination plant is added to the renewable integrated configuration, entailing the addition of the water load, the desalination plant, the water storage tanks and a water control. The power control also takes into account the power request for the water section and the stored water level.

The proposed system models work on a power basis. The developed power control receives information on power demand from the local users (P_D), available power from renewable source (P_{RES}), and requested power for the desalination plant (P_{DES-R}), aiming at the complete replenishment of the water storage. The water control receives information about water load (FR_{WD}) and tanks' state of charge (W_{SOC}), determining the amount of water lacking in storage and the related power request (P_{DES-R}). Hence, the power control compares the power information and defines the effective power supply to the desalination plant (P_{DES}) and the DEGS power need (P_{DEGS}).

The models proposed in this work were developed and dynamically simulated in TRNSYS (16, Solar Energy Laboratory, University of Wisconsin, Madison, WI, USA) [47]. TRNSYS is a diffused transient analysis software, already adopted in previous works on small islands [6,41,42,48,49]. For this work, three components were developed by the authors: The desalination unit and the energy/water controls [50]. The simulations were hourly-based on a year time horizon.

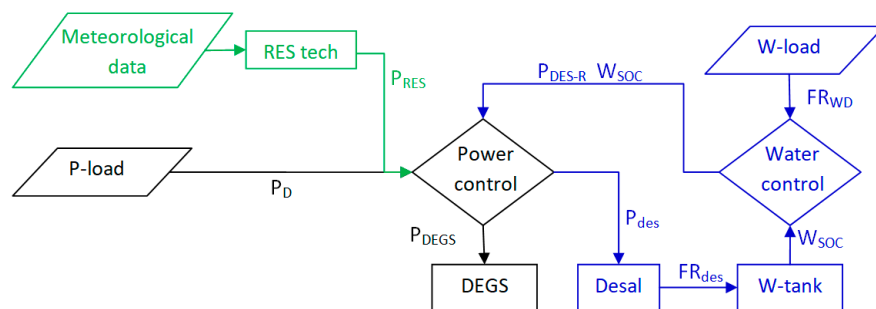


Figure 2. Model flowchart for base case (black section), renewable integrated configuration (green section) and desalination/renewable system (blue section).

Developed Control Logic

A novel energy/water management algorithm was developed to control the different energy and water flows among the system components. The algorithm defines five operation modes to manage the diesel generators and the desalination set-points with respect to power load of the island, renewable energy availability and water reserve.

First, the control logic guarantees energy and water supply. The aim is production of fresh water, exclusively obtained by the generator set performance improvement, in conjunction with the negative effects of the RES power contribution. In fact, RES contribution will decrease the power request to the DEGS, lowering its performance. The activation of any additional engine only for desalination purposes is limited to the cases in which stored water drops below the fixed minimum level; in all other cases the active engines are exclusively those necessary to cover the island power

request. The improved DEGS performance is obtained during desalination operations by increasing the engines' duty power, thus their efficiency, by deciding the final power set point (P_{DEGS}) also taking into account a power threshold.

The scheme for the control module is illustrated in Figure 3. The decision process is driven by steps indicated by letters in circles. The five modes' ends are identified by numbered boxes. The set point is given by the comparison of renewable power availability (P_{RES}), reference power set (P_{REF}), end user power demand (P_D) and clean water production schedule given by the water storage state of charge (W_{SOC}) that is intended to be maintained between a minimum (W_m) and a maximum (W_M) value.

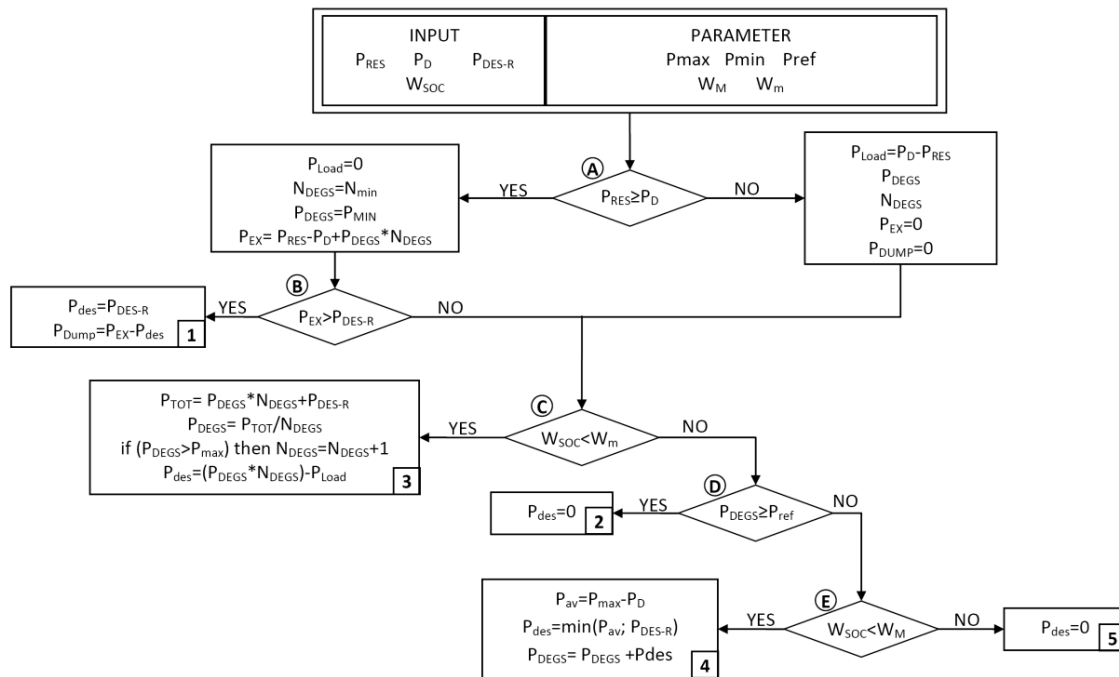


Figure 3. Energy/water control logic scheme.

The first step checks for renewable power surplus. If renewable power (P_{RES}) exceeds the power demand (P_D), the DEGS is operated at minimum duty; else, an initial power set point and the engine's number will be determined by means of the standard TRNSYS generator set control [47], accounting for engine min-max power ratio. Hence, in case of renewable power higher than power demand, the renewable power excess added with the power from DEGS on minimum duty, resulting in P_{EX} , will be directly used for desalination purposes if P_{EX} is higher than the maximum power request for desalination (P_{DES-R}) (mode 1).

If P_{EX} is less than P_{DES-R} or P_{RES} is less than P_D , a new generator set point is determined having two options:

1. Power (and eventually number) of on-duty engines changes to meet the desalination plant power request, when the water tank state of charge is below W_m (mode 3); and,
2. On-duty engine power increases when state of charge is between W_m and W_M (mode 4).

If DEGS already works at a satisfactory duty point higher than P_{REF} , there will be no changes in the DEGS set points and no desalination (mode 2).

Desalination is also cut-out when water tanks are full (mode 5).

It is worth noting how the W_M value affects the control behavior: If $W_M = 0$, then engines are never switched on only for water desalination purposes; if W_M is between 0 and 1, then in some cases

engines may be switched on only for desalination purposes; and, if $W_M = 1$ then engines are always allowed to be switched on for desalination purposes.

Regarding the ReC scenario, due to the absence of desalination, the control logic operation is limited to modes 1, 2 and 5. Thus no gen-set power adjustments or increase in engine numbers will take place. In particular, in case of RES power exceeding the load, the renewable power excess added with the power from DEGS on minimum duty will be completely dumped (mode 1). In case of power load higher than RES availability, the direction on mode 2 or mode 5 only indicates whether the engines are working above the reference power or not.

4. Results and Discussion

The global performance of the simulated scenario is shown in Table 3. In view of the island's user load (i.e., 10,663.68 MWh/year), the RES availability considered in this work amounts to 3147 MWh/year, which represents a potential load coverage of 30%.

Table 3. Overall performance comparison.

Performance Index	Scenario		
	BC	ReC	DeReC
RES energy availability (MWh/year)	-	3146.64	3146.64
Engines energy output (MWh/year)	10,664.68	8125.65	9256.32
Dumped energy (MWh/year)	-	536.61	229.42
Overall engines duty time (h/year)	12,167	11,097	11,390
Mean engines power (kW)	876.44	732.24	812.67
Fuel consumption (10^3 L)	2778.26	2178.49	2439.50
Engines mean electric efficiency	0.3874	0.3691	0.3784
Fuel specific consumption (L/kWh)	0.2605	0.2681	0.2635
Energy to desalination (MWh/year)	-	-	1507.94
DEGS-related carbon dioxide emissions (t_{CO_2eq} /year)	7705.21	6041.81	6765.69

Due to demand/RES hourly mismatch, a RES surplus of 275.66 MWh/year is found in the ReC, indicating the effective RES load coverage amounts to 25%. Moreover, based on the hypothesis of having one engine always on duty, the global dumped energy rises to 536.61 MWh/year. Nevertheless, the RES introduction allows a reduction of the overall engines' duty time from 12,167 to 11,097 h/year, with a 24% reduction of the global engines' energy output and a 22% fuel consumption decrease. The effect is a 22% reduction of the equivalent carbon dioxide emissions. Besides these positive effects, a 16.45% decrease of the average engine's power is computed, affecting the efficiency that passes from 0.3874 to 0.3691. The control logic use results are presented in Table 4 and Figure 4. As the ReC scenario is in absence of the desalination system, the engines' power modulation is never engaged; consequently, there is no use of modes 3 and 4. Most of the time (i.e., 6160 h/year), the DEGS works with engine power higher than the reference power (mode 2). This behavior is distributed throughout the simulated year period. For 1667 h/year, the engines work at a power set point lower than the reference power (mode 5), but the absence of desalination does not allow power to rise to the power set point. This mode of behavior is also distributed throughout the year, but, as expected, it shows some holes in April and August when the higher power request better dampens the RES fluctuations. Finally, during 933 h/year, renewable energy availability exceeds the user load, resulting in the DEGS working with only one active engine at its minimum power, and the excess RES and DEGS power entirely dumped (mode 1). In this case, the mode distribution over the year clearly shows numerous holes, with a particular long amplitude during July and August, when the tourist-related power load far exceeds the RES contribution.

When analyzing the desalination/renewable configuration, the surplus power is used to feed the desalination plant. In particular, 276 MWh/year of the RES energy remains available for desalination after load coverage. Of such energy, 208 MWh/year are used to match the desalination side power

request, allowing $58 \times 10^3 \text{ m}^3/\text{year}$ water production (i.e., 13.8% of the entire water load). In the DeReC scenario, the dumped energy, distributed over 791 h, is reduced with respect to the ReC scenario and amounts to about 230 MWh/year. Ninety-eight percent of the power dump is due to an excess of power availability with respect to the desalination side power request. The remaining 2% of the dumped energy is attributable to the water storage fullness. As the number of engines is allowed to increase in case of water shortage, the number of overall engines' duty time is slightly higher than in the ReC. A 10.98% increase of the mean engines' power is registered with respect to ReC, even though it represents only 97.72% of the mean engines' power in the BC, negatively affecting fuel consumption and engine efficiency. Carbon dioxide emissions are approximately 12% higher than in ReC but 12% less than in BC.

Table 4. Occurrence of control logic modes.

Scenario	Mode Occurrence (h)				
	1	2	3	4	5
ReC	933	6160	0	0	1667
DeReC	791	4453	2229	1287	0

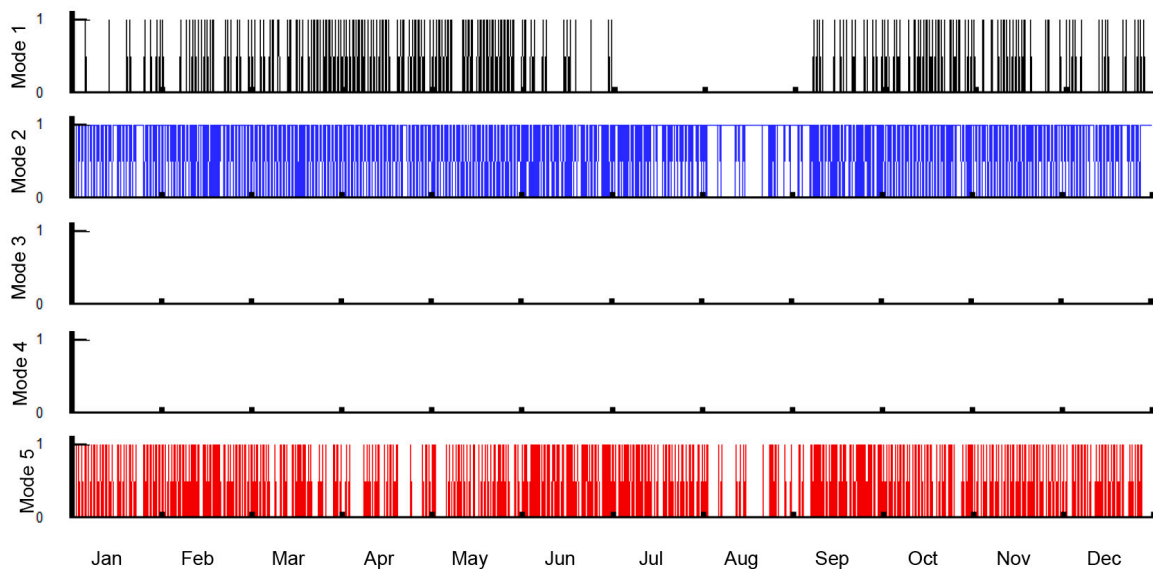


Figure 4. Operating modes occurrence of the ReC system during a reference year

Table 4 and Figure 5 show the results for the operating modes deriving from the control logic application. In the DeReC scenario, the water storage fullness is never concurrent with the possibility to increase the engines' power set point, hence mode 5 is never engaged. It is evident that mode 2 remains the most frequent situation distributed over the year, with an occurrence of 4453 h and a gap during August. For 2229 h, the system registers a water level less than the fixed minimum (mode 3), conducting to the increase of the active engines' power independently from the engines' power set point related to the island power load coverage. Moreover, for 322 h an additional engine is switched on in order to re-establish, at least, the fixed minimum water store. In Figure 5 it can be noticed that mode 3 is the only operation mode active during August, which is the most critical period of the year for water supply in the island. An increase of the initial engines' power set points for desalination purposes is also registered for 1287 h in mode 4, as the engines' power is less than the reference power.

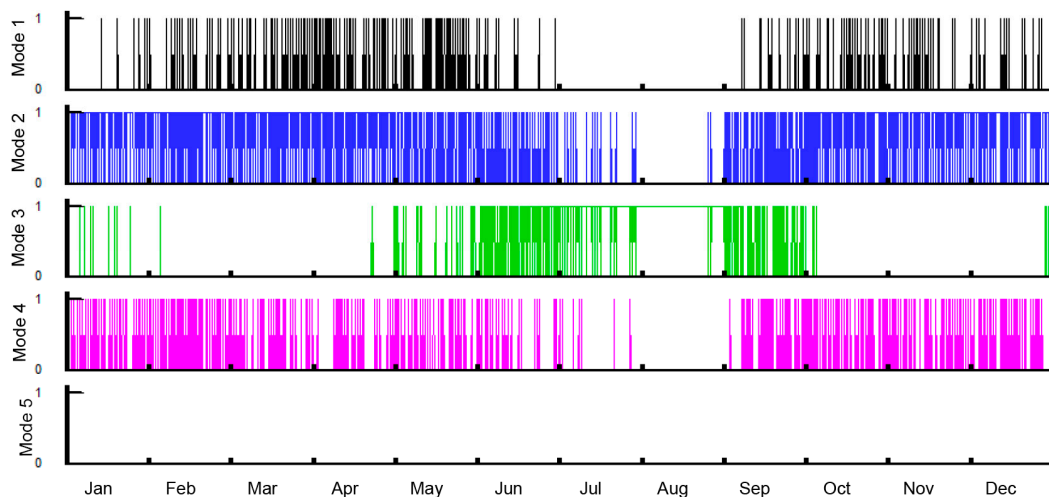


Figure 5. Operating modes of the DeReC system during a reference year.

As expected, the PV-based RES power availability, distributed throughout the year, makes a higher contribution during the summer period, matching with the higher user power demand (Figure 6a). In the summer period, the RES availability never exceeds the load, while during the rest of the year RES surplus reaches peaks of about 800 kW, with yearly RES energy surplus of about 276 MWh/year distributed over 933 h. Nevertheless, due to the hypothesis of a constantly active engine, in the ReC the dumped energy increases to a value of 537 MWh/year, while the energy absorption of the desalination side allows a decrease of the dumped energy to the value of 229 MWh/year in the DeReC. Figure 6b shows the hourly dumped power curves for the ReC and DeReC. One can observe the similar distribution of the two curves with lower peaks for the DeReC, and the absence of power dumps from 1 July to 5 September.

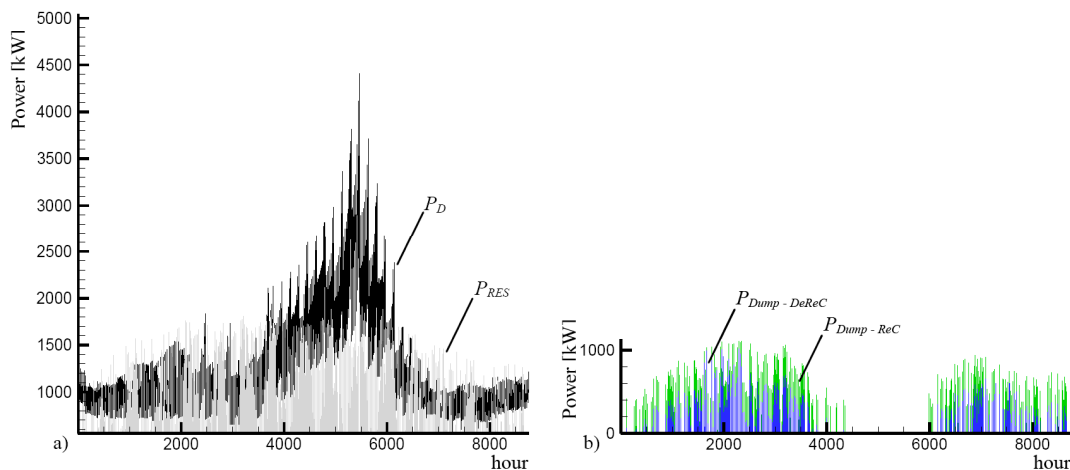


Figure 6. Hourly based curves for (a) user load (P_D , black line) and renewable power availability (P_{RES} , grey line) during a reference year and (b) dumped power in the ReC ($P_{Dump-ReC}$, green line) and DeReC ($P_{Dump-DeReC}$, blue line), during a reference year.

Referring to the DeReC, energy supplied to the desalination plant globally amounts to about 1.5 GWh, with values exceeding 240 MWh in July and August (entailing 33% of the whole supply), and values below 100 MWh from January to April and from October to December (Table 5). The desalination plant works 4283 h/year. The overall desalination plant duty time amounts to 32,930 h/year.

Table 5. Monthly distribution of the energy sent to the desalination plant.

Month	1	2	3	4	5	6	7	8	9	10	11	12	Total
E_{DES} (MWh)	71.17	68.43	76.83	93.99	132.27	186.19	240.11	263.11	151.68	89.73	69.73	64.7	1507.94

Figure 7 shows the occurrence distribution of the contemporarily active RO units during the year. Most of the time (i.e., 3463 h/year), each of the eight RO units is working. The number of hours in which only seven RO units are simultaneously on duty is 636 h/year. In these two cases, the operations are distributed throughout the year. A different behavior is shown for six to only one active RO units. In these cases, it can be seen that such situations are infrequent with an occurrence ranging from 11 to 45 h, passing from one single unit to six simultaneously active units. Moreover, these cases are focused on two periods of the year, corresponding to high storage fill levels which temporary reduce the need to desalinate water.

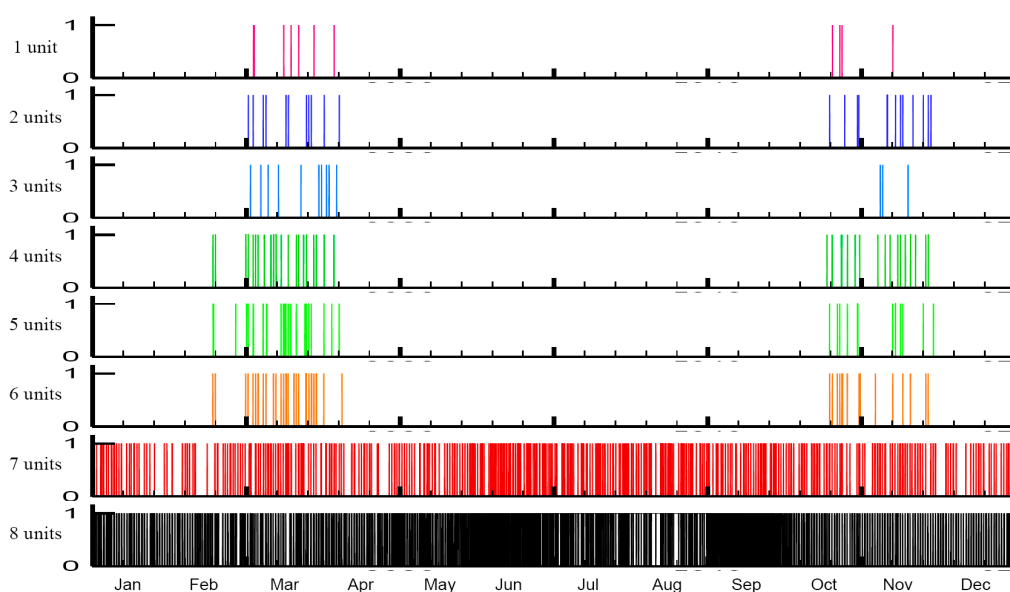


Figure 7. Occurrence distribution of number of active RO units in the DeReC system during a reference year.

The DeReC scenario is able to produce $412 \times 10^3 \text{ m}^3/\text{year}$ of fresh water (i.e., 98% of the total water load), with the 2% deficit concentrated in the summer period. Figure 8 shows the water content in storage. The maximum water content is in correspondence with the high renewable power availability and the low users’ power and water loads in the periods from 2 March–10 April and 15 October–3 November. It is worth noting that the power dump is concentrated in the same period (see Figure 6b) indicating that the dump is strictly related to the fullness of the water storage. For the remaining part of the year, the water content remains at levels higher than the fixed minimum of 600 m^3 , with the exception of the summer period, in which water deficits are also registered with a total water lack of $4312 \text{ m}^3/\text{year}$ occurring for 147 h distributed between 18 July and 29 August. In these cases, the DEGS are managed by increasing the duty power or by increasing the number of active engines, and the desalination station works at its maximum with very few exceptions (i.e., 26 h in which the active RO units number seven). This indicates that the water demand is higher than the RO station’s capability to completely cover the water request. Two solutions may be taken into account: (a) Resorting to an additional small size RO unit for water peak shaving purposes or, (b) substituting some of the RO units with increased water production (and power absorption) ones.

To give hints about the load-leveilling performance of the system, the behavior of the supplied power from the DEGS in the three proposed scenarios is shown in Figure 9 for three representative days:

(a) A winter day (Saturday, 4 February); (b) a spring day (Thursday, 10 May); and, (c) a summer day (Thursday, 16 August). Additionally, Table 6 shows the DEGS supplied power maximum imbalance data of the ReC and DeReC curves with respect to the BC curves in the selected winter, spring and summer days. In Figure 9, the black line, corresponding to the BC, indicates the final users' load curve, also for the other simulated scenarios. Generally, the intermediate position of the DeReC curve (blue line), with respect to the BC and ReC curves, demonstrates the ability of the desalination plant to act as a remedy to the DEGS power drops due to resorting to renewable energy sources. It is also worth highlighting that the RES fluctuations are barely predictable (ReC), while the proposed DeReC allows a more controlled operation of DEGS with power fluctuations that rely mostly on the adopted control logic limits.

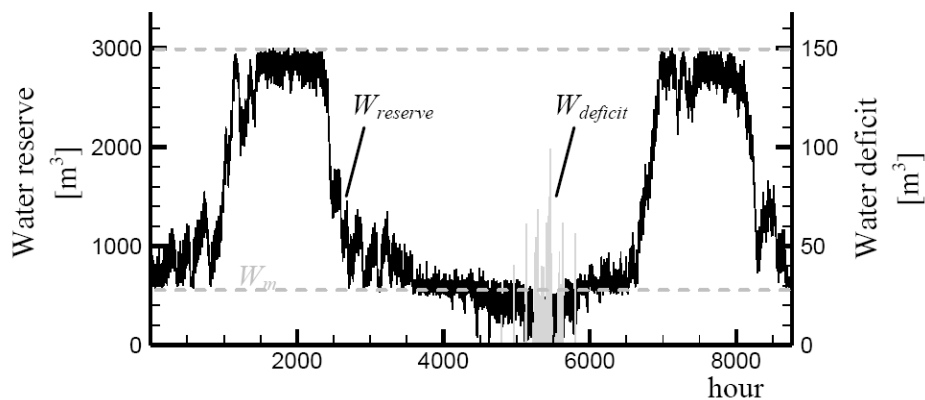


Figure 8. Hourly based curves for water reserve (left axis, black line) and water supply deficit (right axis, grey line) in DeReC during a reference year.

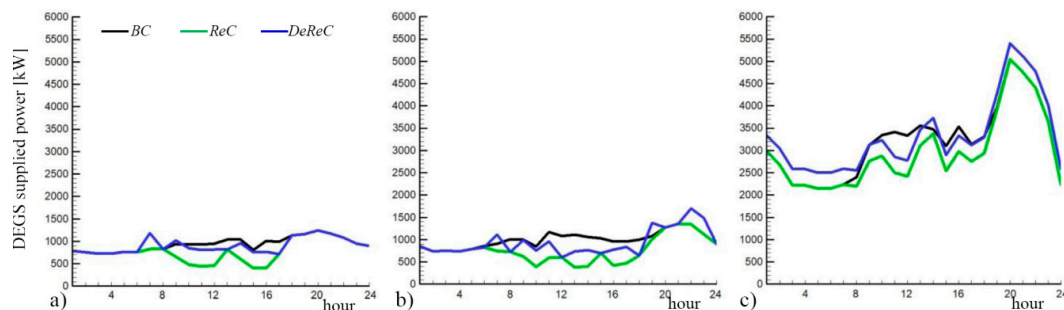


Figure 9. Hourly based curves for DEGS supplied power in BC (black line), ReC (green line) and DeReC (blue line) for three specific days: (a) 4 February, (b) 10 May (c) 16 August.

Table 6. DEGS supplied power maximum imbalance data for ReC and DeReC with respect to BC in three specific days.

Day	Daily Energy Difference		Maximum Power Imbalance			
	ReC vs. BC	DeReC vs. BC	ReC vs. BC		DeReC vs. BC	
	MWh	MWh	kW	%	kW	%
Winter day–4 February	−3.65	−0.77	605.10	60.0	359.44	43.5
Spring day–10 May	−5.50	−1.55	727.49	65.6	468.88	43.5
Summer day–16 August	−5.21	3.42	911.02	26.7	551.58	16.8

For the winter day (Figure 9a), the RES availability in the ReC entails a DEGS power decrease in the central hours of the day from 8 a.m. to 5 p.m., with a maximum imbalance of 60%, corresponding to

605 kW, with respect to the BC curve. The DeReC shows more constant behavior, with a maximum imbalance of 360 kW, corresponding to 43.5%, with respect to BC. Moreover, the two cases in which the DEGS power supply exceeds the BC are caused by the maximum power request from the desalination plant side due to storage water shortage. Concerning the spring day (Figure 9b), as the RES supply increases in power and time, the gap between the ReC and BC curves show a maximum difference increase to 66%, which corresponds to 727 kW. In this case, the DeReC also presents intermediate values with a more linear behavior, with a maximum gap of 43.5%, corresponding to 467 kW. The summer day (Figure 9c), represents the most extreme working conditions of the plant due to the high final users' power request. The ReC and DeReC curves fluctuate more than in the other days and the DeReC curve traces the ReC curve with a constant 395 kW shift, which is the power contribution for the desalination plant. A maximum power imbalance of 911 kW is registered; nevertheless, as higher power values are involved in this period, the corresponding percentage decreases to 26.7%. In the DeReC, the DEGS power output exceeds the BC curve for most of the day-time as the desalination power request at its maximum rate (aimed at replenishing the almost-empty water storage) is added to the original users' power load (BC curve). An exception is the 7 h-period from 10 a.m. to 5 p.m., in which the RES contribution allows the DeReC curve to under-shoot the BC curve.

Looking at the daily DEGS supplied energy difference between ReC and DeReC with respect to BC in the three selected days (Table 6), it can be noticed, by the negative values, that in most cases the ReC and DeReC scenarios show lower DEGS energy requests than BC. The exception is represented by the DeReC scenario during the summer day, as the continuous desalination energy request is well above the RES contribution.

Figure 10 shows the hourly distribution of the engine efficiency for the proposed scenarios. It is evident from the comparison of Figure 10a,b that the introduction of the renewable technology in the local power system worsens the DEGS performance, corresponding to a more dispersed efficiency values distribution, passing from a 0.3585–0.4095 range to a 0.2963–0.4095 range with an average efficiency of 0.3874 and 0.3691 in the BC and ReC, respectively. On the other hand, the use of the desalination plant (Figure 10c), while having an efficiency range similar to the ReC, features a denser distribution of high efficiency operations driving the average value to 0.3784. Notably, both ReC and DeReC feature an elevation of minimum efficiency in summer hours (Figure 10b,c) above 0.35, as a consequence of the engines working closer to their maximum power rating. In this respect, the DeReC scenario also exhibits the positive effects of the water-energy nexus, with a remarkably extended time interval of higher average engine efficiencies, indicating, once more, the impact of the proposed solution to the RES balancing problems in small off-grid power systems.

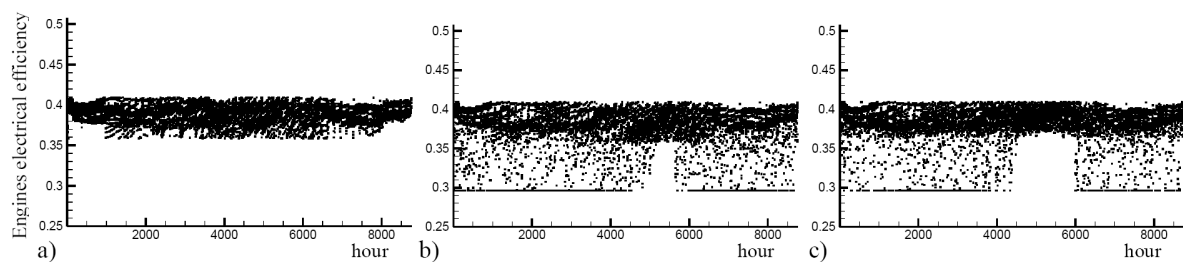


Figure 10. Hourly based electrical efficiency of the engines for a reference year in (a) BC, (b) ReC, and (c) DeReC.

The last considered factor is the equivalent carbon dioxide emissions, shown in Figure 11. In BC and ReC, the emissions related to the shipped water supply to the island are also taken into account, as evaluated in [43]. The $\text{CO}_{2\text{eq}}$ emissions for the fuel transport are not taken into account, as there is not dedicated transportation. Indeed, fuel procurement is made by means of the same ferry-boats that transport both people and goods to the island. The higher environmental sustainability of the DeReC is demonstrated, despite its partial reliance on fuel-derived energy. The BC and ReC

curves are considerably higher than the DeReC curve, with a yearly emissions impact of +30% and +54% for ReC and BC, respectively. The emissions reduction is most marked in the May-September period, with monthly emissions savings of over 200 t_{CO_2eq} for the DeReC with respect to BC and ReC. Globally, the emissions in the BC, ReC and DeReC amount to 10,434 t_{CO_2eq} , 8771 t_{CO_2eq} and 6766 t_{CO_2eq} , respectively, indicating that the proposed DeReC system allows emissions savings of about 65% with respect to the BC and ReC.

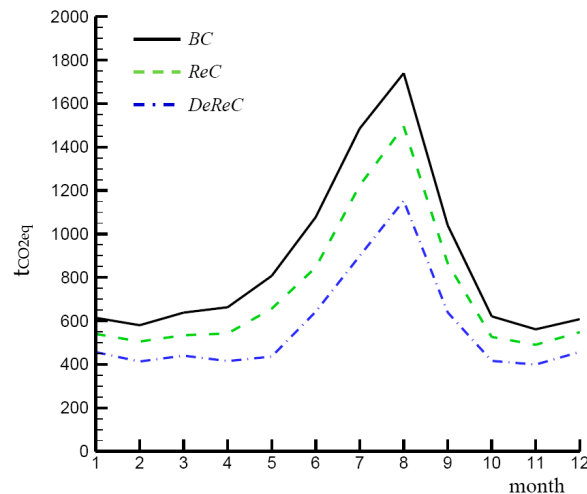


Figure 11. Monthly based curves for equivalent carbon dioxide emissions in BC (solid black line) ReC (dashed green line) and DeReC (dashed-dotted blue line), accounting for water shipping emissions in BC and ReC.

5. Conclusions

The present study proposes a novel management scheme for integrated energy/water systems in remote areas. The control logic aims at a desalination activity no longer subjected to energy availability or water production goals but intended to smooth the load curve modified by RES fluctuations. Indeed, in the proposed scheme, water production exclusively depends on the need to balance RES fluctuations on the load curve in order to mitigate the negative effects of RES on the DEGS performance. Thus, desalination operations are only fed by energy derived from RES surplus and from set point adjustment of the already active diesel-engines. The activation of additional engines for desalination purposes is allowed only in case of water level emergency situations. These working conditions were implemented in the developed control logic of the integrated energy/water system.

The comparison of the obtained results demonstrates the capability of the proposed system management to smooth the load gaps resulting from RES fluctuations, with the desalination systems acting as an additional load during the summer period and as a one-way energy storage during the rest of the year.

The analysis demonstrated the positive effects of the proposed DeReC system on the local power system. On the RES side, the presence of the desalination system ensures higher renewable energy absorption; the RES energy dump recovery was over 50% with respect to the renewable energy integrated system without desalination. On the diesel engines side, the DeReC allows a 9% recovery of the mean engines' power with respect to the 16.45% drop related to RES introduction in the ReC. Moreover, a recovery of 2.4% of the mean engines' electric efficiency is registered after a 4.7% drop related to the RES introduction with respect to the base case scenario. From the global emissions point of view, taking into account current water shipping emissions, the proposed energy/water system entails equivalent CO₂ emissions reduction of approximately 50% with respect to the current island situation and 30% with respect to the proposed renewable energy integration scenario.

Beside the relevance of the illustrated results, the proposed system has the capability to cover a 98% share of water demand (easily scalable to 100% with a few small control logic adjustments), mainly by adjusting the power set-point of the diesel gen-set.

It is easy to conceive of similar stand-alone power systems with water shortage problems and the uncontrolled presence of distributed renewable energy. The present study demonstrates that the addition of a relevant desalination power load to a small off-grid energy system may not represent a negative complex addition to the system, but may be able to smooth the DEGS management problems that usually occur with the inevitable RES penetration on such systems. Furthermore, it demonstrates the possibility to get benefits on the emissions side while obtaining a necessity such as fresh water. This implies the possibility of going beyond RES penetration limitations on islands or remote off-grid areas by creating a water/energy nexus.

Author Contributions: Conceptualization, E.T.; Formal analysis, A.C. and E.T.; Investigation, E.T.; Methodology, A.C. and E.T.; Supervision, A.C.; Validation, A.C. and E.T.; Visualization, E.T.; Writing – original draft, A.C. and E.T.

Acknowledgments: The Authors express their gratitude to E. Cima (Acqua Latina Spa) for the fruitful discussion and the documentations provided.

Conflicts of Interest: The authors declare no conflict of interest

Nomenclature

BC	Base case Configuration
DEGS	Diesel Engine Generator Set
DeReC	Desalination/Renewable energy Configuration
FR_{des}	water production index
FR_{WD}	water load index
N_{DEGS}	number of active diesel engines
N_{min}	minimum number of active diesel engines
P_D	local users power demand
P_{DEGS}	DEGS power
P_{DES}	effective power supply to desalination
P_{DES-R}	desalination plant power request
P_{DUMP}	power curtailment
P_{EX}	power excess
P_{LOAD}	power demand after RES deduction
P_{max}	Engine maximum power
P_{min}	Engine minimum power
P_{ref}	Engine reference power
RO	Reverse Osmosis
P_{RES}	RES power availability
PV	Photovoltaic
ReC	Renewable energy Configuration
RES	Renewable Energy Source
W_m	Lower limit for W_{SOC}
W_M	Upper limit for W_{SOC}
W_{SOC}	water storage state of charge

References

1. Blechinger, P.; Seguin, R.; Cader, C.; Bertheau, P.; Breyer, C. Assessment of the global potential for renewable energy storage systems on small islands. *Energy Procedia* **2014**, *46*, 294–300. [CrossRef]
2. Public Power Corporation (PPC). Annual Production Plan of Autonomous Power Stations. Technical Report Prepared by Island Production Department of Greek Public Power Corporation, Athens, Greece. 2015. Available online: <https://www.dei.gr/documents/> (accessed on 18 December 2017).

3. Kaldellis, J.K.; Kondili, E.M. The water shortage problem in the Aegean archipelago islands: Cost-effective desalination prospects. *Desalination* **2007**, *216*, 123–138. [[CrossRef](#)]
4. Cima, E. (Acqualatina S.P.A., Italy). Personal Communication, 2016.
5. Corsini, A.; Rispoli, F.; Gamberale, M.; Tortora, E. Assessment of h2- and h2o-based renewable energy-buffering systems in minor islands. *Renew. Energy* **2009**, *34*, 279–288. [[CrossRef](#)]
6. Beccali, M.; Bonomolo, M.; Di Pietra, B.; Ippolito, M.G.; La Cascia, D.; Leone, G.; Lo Brano, V.; Monteleone, F.; Zizzo, G. Characterization of a small Mediterranean island end-users' electricity consumption: The Case of Lampedusa. *Sustain. Cities Soc.* **2017**, *35*, 1–12. [[CrossRef](#)]
7. Lin, J.-H.; Wu, Y.-K.; Lin, H.-J. Successful experience of renewable energy development in several offshore islands. *Energy Procedia* **2016**, *100*, 8–13. [[CrossRef](#)]
8. Meschede, H.; Holzapfel, P.; Kadelbach, F.; Hesselbach, J. Classification of global island regarding the opportunity of using RES. *App. Energy* **2016**, *175*, 251–258. [[CrossRef](#)]
9. Blechinger, P.; Cader, C.; Bertheau, P.; Huyskens, H.; Seguin, R.; Breyer, C. Global analysis of the techno-economic potential of renewable energy hybrid systems on small islands. *Energy Policy* **2016**, *98*, 674–687. [[CrossRef](#)]
10. Gils, H.C.; Simon, S. Carbon neutral archipelago–100% renewable energy supply for the Canary Islands. *Appl. Energy* **2017**, *188*, 342–355. [[CrossRef](#)]
11. Maizi, N.; Mazauric, V.; Assoumou, E.; Bouckaert, S.; Krakowski, V.; Li, X.; Wang, P. Maximizing intermittency in 100% renewable and reliable power systems: A holistic approach applied to Reunion Island in 2030. *Appl. Energy* **2017**. [[CrossRef](#)]
12. Kuang, Y.; Zhang, Y.; Zhou, B.; Li, C.; Cao, Y.; Li, L.; Zeng, L. A review of renewable energy utilization in islands. *Renew. Sustain. Energy Rev.* **2016**, *59*, 504–513. [[CrossRef](#)]
13. Irena, Grein-Global Renewable Energy Islands Network, Supporting Island Transitions to a Renewable Energy Future. Available online: <http://www.irena.org/> (accessed on 18 December 2017).
14. Rocky Mountain Institute and Carbon War Room, the Ten Island Renewable Challenge. Available online: <http://carbonwarroom.com/content/islands-energy-program> (accessed on 18 December 2017).
15. Bottini, A. Sulla briologia delle isole italiane. *Webbia* **1907**, *2*, 345–402. [[CrossRef](#)]
16. Eurelectric, EU Islands: Towards a Sustainable Energy Future, D./2012/12.105/24. June 2012. Available online: <https://cdn.eurelectric.org/media/1724/> (accessed on 18 December 2017).
17. Sigrist, L.; Lobato, E.; Rouco, L.; Gazzino, M.; Cantu, M. Economic assessment of smart grid initiatives for island power systems. *Appl. Energy* **2017**, *189*, 403–415. [[CrossRef](#)]
18. Tzanes, G.T.; Zafirakis, D.; Papapostolou, C.; Kavadias, K.; Kaldellis, J.K. PHAROS: An Integrated Planning Tool for Meeting the Energy and Water Needs of Remote Islands using RES-based Hybrid Solutions. *Energy Procedia* **2017**, *142*, 2586–2591. [[CrossRef](#)]
19. Kaldellis, J.K.; Zafirakis, D.; Kavadias, K. Techno-economic comparison of energy storage systems for island autonomous electrical networks. *Renew. Sustain. Energy Rev.* **2009**, *13*, 378–392. [[CrossRef](#)]
20. Gori, F.; Ludovisi, D.; Cerritelli, P.F. Forecast of oil price and consumption in the short term under three scenarios: Parabolic, linear and chaotic behaviour. *Energy* **2007**, *32*, 1291–1296. [[CrossRef](#)]
21. Dai, J.; Wu, S.; Han, G.; Weinberg, J.; Xie, X.; Wu, X.; Song, X.; Jia, B.; Xue, W.; Yang, Q. Water-energy nexus: A review of methods and tools for macro-assessment. *Appl. Energy* **2017**, *210*, 393–408. [[CrossRef](#)]
22. Alkaisi, A.; Mossad, R.; Sharifian-Barforoush, A. A Review of the Water Desalination Systems Integrated with Renewable Energy. *Energy Procedia* **2017**, *110*, 268–274. [[CrossRef](#)]
23. Goosen, M.F.A.; Mahmoudi, H.; Ghaffour, N. Today's and Future Challenges in Applications of Renewable Energy Technologies for Desalination. *Crit. Rev. Environ. Sci. Technol.* **2014**, *44*, 929–999. [[CrossRef](#)]
24. Gude, V.G.; Nirmalakhandan, N.; Deng, S. Renewable and sustainable approaches for desalination. *Renew. Sustain. Energy Rev.* **2010**, *14*, 2641–2654. [[CrossRef](#)]
25. Segurado, R.; Costa, M.; Duić, N.; Carvalho, M.G. Integrated analysis of energy and water supply in islands. Case study of S. Vicente, Cape Verde. *Energy* **2015**, *92*, 639–648. [[CrossRef](#)]
26. Liu, J.; Mei, C.; Wang, H.; Shao, W.; Xiang, C. Powering an island system by renewable energy—A feasibility analysis in the Maldives. *Appl. Energy* **2017**. [[CrossRef](#)]
27. Abdelkareem, M.A.; Assad, M.E.H.; Sayed, E.T.; Soudan, B. Recent progress in the use of renewable energy sources to power water desalination plants. *Desalination* **2018**, *435*, 97–113. [[CrossRef](#)]

28. Mentis, D.; Karalis, G.; Zervos, A.; Howells, M.; Taliotis, C.; Bazilian, M.; Rogner, H. Desalination using renewable energy sources on the arid islands of south aegean sea. *Energy* **2016**, *94*, 262–272. [[CrossRef](#)]
29. Al-Nory, M.; El-Beltagy, M. An energy management approach for renewable energy integration with power generation and water desalination. *Renew. Energy* **2014**, *72*, 377–385. [[CrossRef](#)]
30. González, A.; Delgado, L.; Avia, F.; Mateos, J. Wind and photovoltaic powered reverse osmosis seawater desalination plant. In *Seventh E.C. Photovoltaic Solar Energy Conference*; Springer: Dordrecht, The Netherlands, 1987; pp. 240–244. [[CrossRef](#)]
31. Khalifa, A.J.N. Evaluation of different hybrid power scenarios to reverse osmosis, (ro) desalination units in isolated areas in Iraq. *Energy Sustain. Dev.* **2011**, *15*, 49–54. [[CrossRef](#)]
32. Goldemberg, J. *World Energy Assessment: Energy and the Challenge of Sustainability*; United Nations: New York, NY, USA, 2000.
33. Ren21, Renewable Energy Policy Network for the 21st Century, Renewables 2014, Global Status Report. 2016. Available online: <http://www.ren21.net/status-of-renewables/global-status-report/> (accessed on 19 December 2017).
34. IEA-ETSAP and IRENA, Water Desalination Using Renewable Energy—Technology brief I12. March 2012. Available online: <http://www.irena.org/publications/2013/Jan/IRENA-IEA-ETSAP-Technology-Briefs> (accessed on 19 December 2017).
35. Smaoui, M.; Krichen, L. Control, energy management and performance evaluation of desalination unit based renewable energies using a graphical user interface. *Energy* **2016**, *114*, 1187–1206. [[CrossRef](#)]
36. Hamilton, J.M.; Negnevitsky, M.; Wang, X.; Tavakoli, A.; Mueller-Stoffels, M. Utilization and Optimization of Diesel Generation for Maximum Renewable Energy Integration. In *Green Energy and Technology*; Springer: Berlin, Germany, 2017; pp. 21–70.
37. Nayar, C.V. High Renewable Energy Penetration Diesel Generator Systems. In *Paths to Sustainable Energy*; InTech: London, UK, 2010.
38. Ibrahim, H.; Ilinca, A.; Perron, J. Energy storage systems characteristics and comparisons. *Renew. Sustain. Energy Rev.* **2008**, *12*, 1221–1250. [[CrossRef](#)]
39. Società Elettrica Ponzese, Project for a New Diesel Power Plant. Available online: <http://www.societaelettricaonzese.it/nuova-centrale-di-monte-pagliaro/> (accessed on 2 January 2018).
40. PVGIS-Geographical Assessment of Solar Resource and Performance of Photovoltaic Technology. Available online: <http://re.jrc.ec.europa.eu/pvgis/> (accessed on 19 December 2017).
41. Corsini, A.; Marro, E.; Rispoli, F.; Tortora, E. Wave energy conversion potential from small scale systems in the Pontinian Archipelago. In *Proceedings of the OWEMES 2009 Conference*, Brindisi, Italy, 21–23 May 2009.
42. Corsini, A.; Marro, E.; Rispoli, F.; Tortora, E. Space-Time mapping of wave Energy conversion potential in Mediterranean Sea States. In *Proceedings of the ASME-ATI-UIT 2010 Conference*, Sorrento, Italy, 16–19 May 2010.
43. Corsini, A.; Tortora, E.; Cima, E. Preliminary assessment of wave energy use in an off-grid minor island desalination plant. *Energy Procedia* **2015**, *82*, 789–796. [[CrossRef](#)]
44. Cima, E.; (Acqualatina S.P.A., Italy). Personal Communication, 2017.
45. Drouilhet, S.; Shirazi, M. *Wales, Alaska High-Penetration Wind–Diesel Hybrid Power System: Theory of Operation*; Technical Report; Department of Energy Office of Scientific and Technical Information: Oak Ridge, TN, USA, 2002. [[CrossRef](#)]
46. British Columbia Government Official Web Site. Available online: https://www2.gov.bc.ca/assets/gov/environment/climate-change/data/provincial-inventory/2012/2012_emission-factors.xls (accessed on 19 December 2017).
47. Klein, S.A.; Beckam, W.A.; Mitchell, J.W.; Braun, J.E.; Evans, B.L.; Kummert, J.P. *TRNSYS—A Transient System Simulation Program*; Solar Energy Laboratory: Madison, WI, USA, 2000.
48. Colmenar-Santos, A.; Monzón-Alejandro, O.; Borge-Diez, D.; Castro-Gil, M. The impact of different grid regulatory scenarios on the development of renewable energy on islands: A comparative study and improvement proposals. *Renew. Energy* **2013**, *60*, 302–312. [[CrossRef](#)]

49. Corsini, A.; Rispoli, F.; Tortora, E.; Gonella, M.; Piccini, M. Desalination performance of a concentrated solar power plant for energy and water production. In Proceedings of the 4th international Energy Conference, Ramallah, Palestine, 26–27 January 2011.
50. Corsini, A.; Tortora, E. The influence of water desalination systems on load levelling of gen-set in small off-grid islands. In Proceedings of the 9th International Conference on Applied Energy (ICAE2017), Cardiff, UK, 21–24 August 2017.



© 2018 by the authors. Licensee MDPI, Basel, Switzerland. This article is an open access article distributed under the terms and conditions of the Creative Commons Attribution (CC BY) license (<http://creativecommons.org/licenses/by/4.0/>).